



RECREATION & ACTIVITIES



VELAA
PRIVATE ISLAND
MALDIVES

Private Moments

DIVING

DISCOVER THE MAGIC OF THE SILENT WORLD

Velaa Private Island is located in the untouched Noonu atoll where, only a few minutes away, divers will discover unexplored dive sites with some of the most amazing fauna that the Maldives have to offer.

Velaa Dive Center uses all the latest Scubapro equipment which is renowned for its outstanding quality.

Affiliated with PADI (Professional Association of Diving Instructors), the largest dive association in the world, it offers courses from Bubblemaker for our youngest from 8 years of age all the way up to the professional level of Divemaster.



All prices are quoted in US Dollars and subject to 10% Service charge and 12% T-GST. All water activities are subject to weather conditions. The Management reserves the right to cancel any activities at any given time in view of your safety. Damaged equipment will be charged. Diving with a computer is mandatory. All diving rates include the equipment.

Cancellation policy: A 50% cancellation charge is applicable to activities not cancelled 6 hours prior to the start of the activity. A 100% no-show charge will apply if the activity is cancelled less than one hour prior to the start of the activity. The cancellation period applies to Recreation operating hours (09:00-18:00).



PRIVATE MOMENT DIVE

CERTIFIED DIVER US\$

Single Dive	300
Single Night Dive / Refresher	350
5-Dive Package	1'200

* Private Moment dives are with a private guide per couple or family on a combined boat. The morning dive trip leaves at 08:30 for 2 dives and the afternoon dive trip leaves at 14:30 for 1 dive.

SUBMARINE US\$

Semi-Submarine Exploration (Per Person)	400
---	-----

DISCOVER SCUBA DIVING US\$

Bubblemaker - Pool Session (8 - 10 Years Old)	200
Discover Scuba Diving	350

* No certification or previous experience needed. Discover Scuba Diving session starts at 13:30 with a pool session followed by a boat dive at 14:30.

PRIVATE BOAT DIVE US\$

Private Single Dive / Discover Scuba & Private Boat	1'000
Private Double Dive / Discover Scuba & Private Boat	2'000

* For boats Kun'Ba, Dhana, Thula

PRIVATE LUXURY BOAT DIVE US\$

Private Single Dive / Discover Scuba & Private Boat	1'500
Private Double Dive / Discover Scuba & Private Boat	3'000

* For boats Anna, Mithuna, Virusika

PRIVATE LUXURY RANIA BOAT DIVE US\$

Private Single Dive / Discover Scuba & Private Boat	2'500
Private Double Dive / Discover Scuba & Private Boat	4'800



SWIMMING LESSON US\$

Private Lesson (1 Hour)	200
5 Private Lesson Package	800

PRIVATE GUIDING US\$

Private Dive Guide (Per Session)	300
Private Dive Guide (Full Day)	600
Private Snorkel Guide (Per Session)	200
Private Snorkel Guide (Full Day)	400

* For trips that do not include a guide like boat charters or when an additional guide is required.

SCUBA DIVING COURSES US\$

Scuba Diver Cert. / Upgrade (2 Day Course)	1'800
Open Water Diver Cert. (3 to 4 Day Course)	2'800
Adventure Diver (3 Dives)	1'400
Advanced Open Water (5 Dives)	2'000
Rescue Diver (5 Sessions)	2'700
EFR - No Dives - Theory & Practical (1 day)	700
Dive Master	6'000

* 30% discount will be applied for courses of 2 or more persons

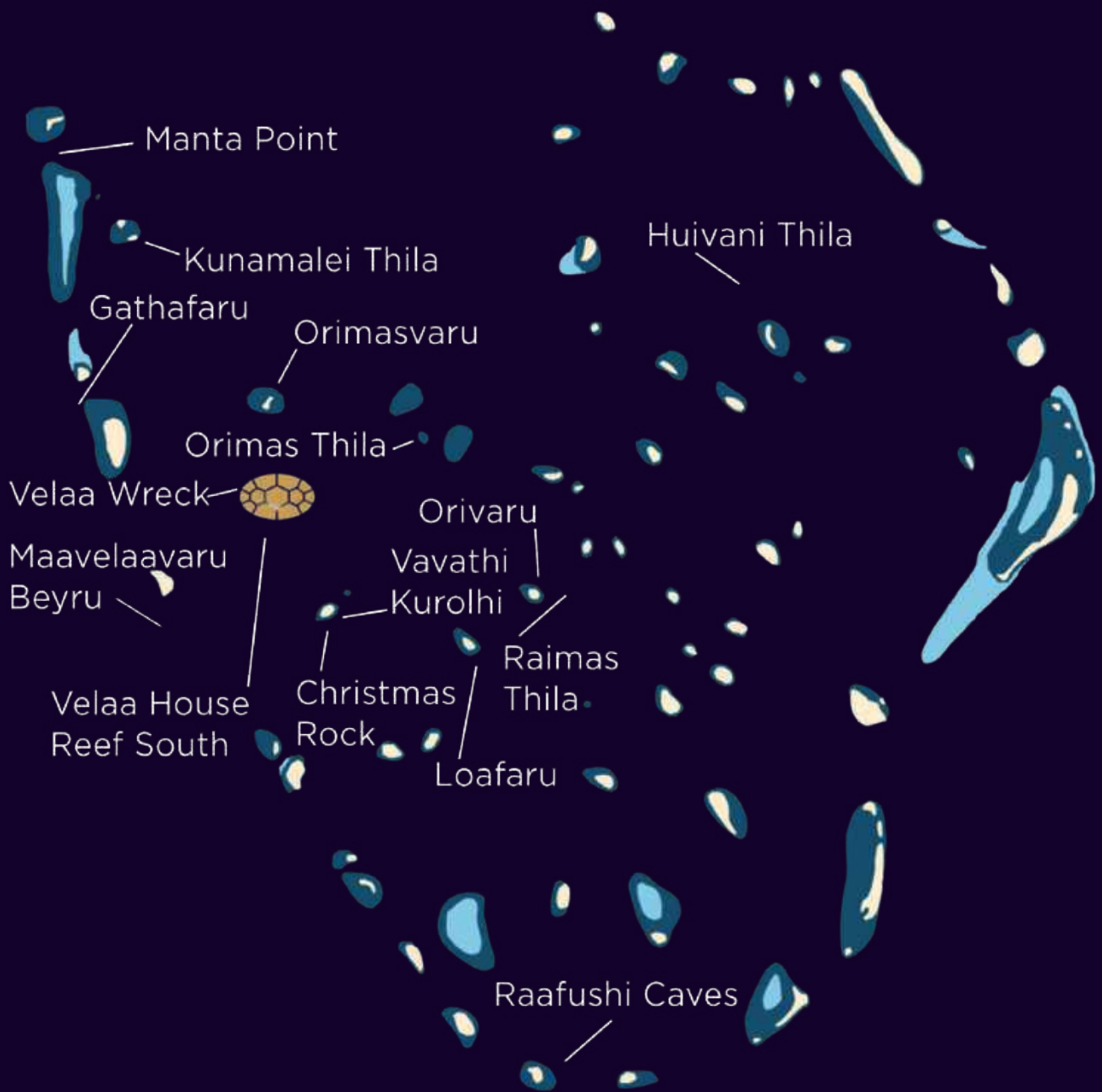
SPECIALITY COURSES US\$

Nitrox Course (2 Dives)	1'100
Drift Specialty (2 Dives)	1'100
Digital Photo (2 Dives incl. Camera)	1'500
Deep Specialty (4 Dives)	1'800

* 30% discount will be applied for courses of 2 or more persons



NEARBY DIVE SITES



NEARBY DIVE SITES

NO.	DIVE SITE	DEPTH (M)	DESCRIPTION
1	CHRISTMAS ROCK	14 - 30	Christmas Rock is a thila dive and one of the favorite dive sites in Noonu Atoll for advanced divers. The site is a treasure trove of nooks and crannies making it a perfect location to see both macro and mega fauna. Expect to see abundant marine life including colourful Reef Fish, schooling Bigeye Trevally, sleeping Whitetip Reef Sharks and elegant Spotted Eagle Rays.
2	GATHAFARU	6 - 30	Fascinating topographic dive with numerous overhangs covered with yellow soft corals. Relax and let the current take you across this channel dive site's reef while encountering Napoleon Wrasses, Eagle rays, Stingrays, Lobsters, and pelagic fish such as Tuna.
3	HUIVANI THILA	10 - 30	This large thila offers the opportunity for divers to explore a vertical wall with overhangs of various sizes. The site is perfect for schooling fish such as Golden Trevally, Fusiliers, and Bannerfish.
4	KUNAMALEI THILA	12 - 30	Kunamalei Thila starts at a depth of 12m, with an anemone garden and a good mix of hard and soft corals at the top of the reef. Descending to 20m there is a swim-through which is home to Lobsters and big Groupers.
5	MAAVELAVARU	3 - 30	Wall dive starting from 3m all the way down to more than 30m. Lobsters, Moray eels, Lionfish can be found hiding inside the overhangs. Now and then have a look into the blue to catch the Eagle Rays, Stingrays and Dogtooth Tuna.
6	MANTA POINT	10 - 15	A cleaning station for Manta Rays is located in the middle of the channel at the Northern end of Noonu Atoll. Seasonal Manta Rays are best sighted during dry season with outgoing current. The site displays shallow undulating topography with hundreds of schooling Snapper and brightly colored Fusilier.
7	ORIMAS THILA	16 - 30	Orimas Thila is a must for divers who love sharks and large marine animals. Grey Reef Sharks can be seen positioning almost vertically opening their mouth to get cleaned. With stronger current, Sharks, Eagle Rays, Stingrays, schooling Bigeye Trevally can be found putting on a show for divers. This dive site is subjected to strong current and is recommended for advanced divers.



NEARBY DIVE SITES

NO.	DIVE SITE	DEPTH (M)	DESCRIPTION
8	ORIMASVARU	2 – 20	Easy and attractive reef with a gentle slope from 2m to 20m. Guaranteed to see Anemone Fish, Fusiliers, Groupers, Red Snappers, Tuna, and occasionally Eagle Rays passing by.
9	ORIVARU	3 – 20	Orivaru is a gently sloping reef with good hard coral coverage, providing home for various species such as Fusiliers, Blue Striped Snappers and schooling Bannerfish. Occasionally Nurse Sharks can be spotted sleeping inside the overhangs.
10	RAAFUSHI CAVES	5 – 30	Located at the Southern end of the Atoll, Raafushi Caves offers another opportunity to explore walls and overhangs in Noonu Atoll. Slow down your pace and take a closer look at the wall to discover the macro life such as Nudibranches, Banded Coral Shrimps, Lionfish, Moray Eels and Scorpion Fish. A favorite spot to find the shy Napoleon Wrasse.
11	RAIMAS THILA	6 – 25	A large thila with a gradual slope to 25m and a shallow top reef. Expect to see schools of Fusiliers, Blue Striped Snappers, Oriental Sweet Lips and a good variation of hard corals and gardens of the Black Tubastrea corals.
12	LOAFARU	3 - 20	This dive site offers an opportunity to explore a shallow reef with hard corals displaying complex structures providing homes for numerous Reef Fish. Explore overhangs to spot Nurse Sharks and Stingrays sleeping inside.
13	VAVATHI KUROLHI	5 – 30	Dive site suitable for both beginners and experienced divers. The site has a shallow top reef with half of the reef displaying a gentle slope while the other half provides a wall experience with overhangs. Be sure to look out into the blue at the wall section to see the abundant schooling Bannerfish, and Redtoothed Triggerfish.
14	VELAA HOUSE REEF SOUTH	5 - 25	Our house reef is located right in front of the South Jetty. Gently sloping from 5m down to 25m, various marine life can be found here, including ambush predators such as the Bluefin Trevally or the Maldivian Anemonefish hiding in its host anemone.
15	VELAA WRECK	20 – 30	A local wooden boat lies at 30m on Velaa's Northern reef, now converted to a unique underwater sight for our divers. Acting as an artificial reef, the wreck is attracting Giant Trevally, Lionfish, Napoleon Wrasses and Whitetip Reef Sharks.



WATER SPORTS

FULFILL YOUR THRILLING FANTASY WITH OUR VARIETY OF HIGH TECH TOYS

Velaa Private Island has Maldives' most extensive and newest watersports toys including the full range of flyboarding, hoverboarding, jetpack and even the latest tandem jetovator.

If you're not into flysports then come and experience a feeling of speed with our latest Seadoo Jet Skis or feel like James Bond exploring the house reef at an incredible speed of up to 22km/h with Seabob.

Maldives' widest range of towables awaits the children who are after some thrilling excitement or the families who want to have some serious enjoyment together.

For the wind lovers, the full range of catamaran sailing, windsurfing or even kite surfing awaits you. If you like it more relaxed, you have the option to cruise on one of our Pedal Boats or Glassbottom Kayaks or even take a Stand Up Paddle-board to explore the surroundings of Velaa.



All prices are quoted in US Dollars and subject to 10% Service charge and 12% T-GST. All water activities are subject to weather conditions. The Management reserves the right to cancel any activities at any given time in view of your safety. Damaged equipment will be charged.

Cancellation policy: A 50% cancellation charge is applicable to activities not cancelled 6 hours prior to the start of the activity. A 100% no-show charge will apply if the activity is cancelled less than one hour prior to the start of the activity. The cancellation period applies to Recreation operating hours (09:00-18:00).



WATER SPORTS

JET SKI US\$

30 mins per Jet Ski	200
1 Hour per Jet Ski	350
1,5 Hour Atoll Tour	500
2 Hours Sandbank & Snorkel Tour	700

* Snorkeling guide free

JET SURF US\$

30 mins per Jet Surf	200
1 Hour per Jet Surf	350

SEABOB US\$

30 mins per Seabob	180
1 Hour per Seabob	280

BOARD SPORTS US\$

Expert Ride 15 mins	100
Beginner Lesson 30 mins	200

* Wakeboard, Waterski, Monoski, Foilboard, Wakeskate

FLY SPORTS US\$

Expert Ride 20 mins	200
Beginner Lesson 30 mins	350
Speed Boat Surcharge	150

* Flyride, Flyboard, Hoverboard, Jetpack, Jetovator

WATER TOWABLES US\$

Fun Tube One Person 20 mins	100
Fun Tube Two Persons 20 mins	180
Fun Tube Three Persons & above 20 mins	250

SMALL SPEEDBOAT HIRE US\$

1 Hour Hire	300
-------------------	-----



CATAMARAN US\$

Catamaran with Skipper per Hour	150
Catamaran Lesson 1 Hour	200
Catamaran International Cert. (6 to 8 Hours)	800

WINDSURFING US\$

Competency Check	free
Windsurfing Lesson 1 Hour	200
Windsurfing International Cert. (6 to 8 Hours)	800

KITESURFING US\$

Competency Check	free
Kite & Board Hire per Hour	100
Kite Surf Lesson 1 Hour	200
Kite Surf International Cert. (8 Hours)	1'700
Kite Surf Lesson on Desert Island 3 Hours	1'000

* including transfer & boat on stand by

RELOCATION FEE US\$

Relocation Fee of any Watersports Equipment ..	100
--	-----

COMPLIMENTARY ACTIVITIES

- Windsurf Hire (For Licensed Surfers Only)
- Stand Up Paddle
- Glass Bottom Kayak



EXCURSIONS

EXPLORE THE MALDIVIAN SEA AND ITS ETERNAL BEAUTY ABOVE AND BELOW THE TURQUOISE WATERS.

Velaa Private Island has custom made boats to fulfill everyone's vision of their Maldivian dream. Start your day with the thrill of some big game fishing, followed by a snorkel around untouched reefs. Enjoy a lavish lunch on a desert island with your fresh catch. As the sun goes down, set off to cruise into the sunset whilst admiring the Spinner Dolphins. These are but only a few options....many more await you !



All prices are quoted in US Dollars and subject to 10% Service charge and 12% T-GST. All water activities are subject to weather conditions. The Management reserves the right to cancel any activities at any given time in view of your safety.

Cancellation policy: A 50% cancellation charge is applicable to activities not cancelled 6 hours prior to the start of the activity. A 100% no-show charge will apply if the activity is cancelled less than one hour prior to the start of the activity. The cancellation period applies to Recreation operating hours (09:00-18:00).



RANIA LUXURY YACHT CRUISES

Powerful yet elegant, Rania blends exceptional engineering and unrivalled craftsmanship to create an unforgettable experience.

DOLPHIN CRUISE / SUNSET FISHING US\$

2 Hours (Up to 4 Persons)	2'500
Additional Hour	1'100
Additional Person	350

* Including 1 bottle of champagne or beers, canapés, fruit platter, juices.

** Including fish preparation (grilled, steamed, sashimi)

SNORKELLING TRIP US\$

2.5 Hours (Up to 4 Persons)	2'700
Additional Hour	1'100
Additional Person	350

* Including 1 bottle of champagne or beers, canapés, fruit platter, juices.

BIG GAME FISHING US\$

Full-Day (Up to 4 Persons)	8'200
Half-Day (Up to 4 Persons)	4'200
Additional Hour	1'100
Additional Person	350

* Including breakfast menu; Half-Day trip duration: 4 hours; Full-Day trip duration: 8 hours.

** Including fish preparation (grilled, steamed, sashimi)

DESERT ISLAND DINNER CRUISE US\$

5 Hours (2 Persons)	8'100
Additional Hour	1'100
Additional Person	420

* Including BBQ dinner & non-alcoholic beverages. 2 hours cruising, 3 hours dinner.

WAVE FOIL SURFING US\$

1 Hour	1'500
------------------	-------



HANIFARU MANTA (SEASONAL) US\$

4 Hours (Up to 4 Persons)	6'500
Additional Hour	1'100
Additional Person	350

* Including 1 bottle of champagne or beers, canapés, fruit platter, juices.

HAA ALIFU MANTA SPECIAL (SEASONAL) US\$

8 Hours (Up to 4 Persons)	10'000
Additional Hour	1'100
Additional Person	350

* Including 1 bottle of champagne or beers, canapés, fruit platter, juices.

CHARTERS US\$

Full-Day Charter (Up to 4 Persons)	8'200
Half-Day Charter (Up to 4 Persons)	4'200
Desert Island Surcharge	2'000
Additional Hour	1'100
Additional Person	350

* Including 1 bottle of champagne or beers, canapés, fruit platter, juices.

** Half-Day Charter duration: 4 hours, Full-Day Charter duration: 8 hours. Half-Day Charters are from 09:30 to 13:30 and from 14:30 to 18:3



RANIA LUXURY YACHT CRUISES

Powerful yet elegant, Rania blends exceptional engineering and unrivalled craftsmanship to create an unforgettable experience.



TRANSFERS

US\$

Cheval Blanc	2'600
Soneva Jani	2'600
Irufushi	2'600
Ifuru domestic airport	2'900
Joali Resort	3'500
Maafaru domestic airport	3'900
Hurawalhi	3'900
Kanuhura	3'900
Anantara Kihavah	4'200
Four Seasons Landaa Giraavaru	4'200
Amilla Fushi	4'200
Soneva Fushi	5'500
Finolhu	5'500
One&Only	12'000
Male Airport	12'000
Waldorf Astoria	12'000

LUNCH / DINNER / VISITS

US\$

Cheval Blanc	5'500
Irufushi	5'500
Soneva Jani	5'500
Hurawalhi	6'800
Joali	6'800
Anantara Kihavah	8'900
Amilla Fushi	8'900
Four Seasons Landaa Giraavaru	8'900
Soneva Fushi	9'500
Finolhu	9'500



BATHELI ANNA CRUISES

Traditional Maldivian Batheli ANNA offers an authentic experience which will give romance a new meaning with its luxury and contemporary finishes.

SUNSET / DOLPHIN CRUISE US\$

2 Hours (Up to 4 Persons) 1'800
 Additional Hour 700
 Additional Person 350

* Including 1 bottle of champagne or beers, canapés, fruit platter, juices.



DESERT ISLAND DINNER CRUISE US\$

5 Hours (2 Persons) 6'400
 Additional Hour 700
 Additional Person 420

* Including BBQ dinner & non-alcoholic beverages. 2 hours cruising, 3 hours dinner.

SNORKELLING TRIP US\$

2.5 Hours (Up to 4 Persons) 1'900
 Additional Hour 700
 Additional Person 350

* Including 1 bottle of champagne or beers, canapés, fruit platter, juices.

DINNER CRUISE US\$

4 Hours (2 Persons) 4'100
 Additional Hour 700
 Additional Person 600

* Including 4-course dinner & non-alcoholic beverages.

CHARTERS US\$

Full-Day Charter (Up to 4 Persons) 5'400
 Half-Day Charter (Up to 4 Persons) 2'900
 Desert Island Surcharge 2'000
 Additional Hour 700
 Additional Person 350

* Including 1 bottle of champagne or beers, canapés, fruit platter, juices.

** Half-Day Charter duration: 4 hours, Full-Day Charter duration: 8 hours. Half-Day Charters are from 09:30 to 13:30 and from 14:30 to 18:30.



MITHUNA LUXURY YACHT CRUISES

This modern 50 Foot yacht with 3 bedrooms is your ideal all around companion if luxury, speed and further away exploration is what you desire.

BIG GAME FISHING US\$

Full-Day (Up to 4 Persons)	5'400
Half-Day (Up to 4 Persons)	2'900
Additional Hour	700
Additional Person	350
* Including breakfast menu; Half-Day trip duration: 4 hours; Full-Day trip duration: 8 hours.	
** Including fish preparation (grilled, steamed, sashimi)	



SNORKELLING TRIP US\$

2,5 Hours (Up to 4 Persons)	1'900
Additional Hour	700
Additional Person	350
* Including 1 bottle of champagne or beers, canapés, fruit platter, juices.	

DOLPHIN CRUISE / SUNSET FISHING US\$

2 Hours (Up to 4 Persons)	1'800
Additional Hour	700
Additional Person	350
* Including 1 bottle of champagne or beers, canapés, fruit platter, juices.	

DESERT ISLAND DINNER CRUISE US\$

5 Hours (2 Persons)	6'400
Additional Hour	700
Additional Person	420
* Including BBQ dinner & non-alcoholic beverages. 2 hours cruising, 3 hours dinner.	



CHARTERS US\$

Full-Day Charter (Up to 4 Persons)	5'400
Half-Day Charter (Up to 4 Persons)	2'900
Desert Island Surcharge	2'000
Additional Hour	700
Additional Person	350
* Including 1 bottle of champagne or beers, canapés, fruit platter, juices.	
** Half-Day Charter duration: 4 hours, Full-Day Charter duration: 8 hours. Half-Day charters are from 09:30 to 13:30 and from 14:30 to 18:30.	

TRANSFERS US\$

Cheval Blanc / Irufushi / Soneva Jani	1'600
Ifuru Domestic Airport	1'800
Maafaru Domestic Airport / Hurawalhi / Joali	2'500
Anantara Kihavah / Amilla Fushi / FSLG	2'900
Soneva Fushi / Finolhu	3'700
Male Airport / Waldorf Astoria / One&Only	8'500

LUNCH / DINNER / VISITS US\$

Cheval Blanc / Irufushi / Soneva Jani	4'300
Hurawalhi / Joali	5'000
Anantara Kihavah / Amilla Fushi	6'100
Four Seasons Landaa Giraavaru	6'100
Soneva Fushi / Finolhu	6'800



VIRUSIKA CRUISES

Virusika is a top-notch custom configured fishing boat that boasts all the latest fishing gear and has the speed to take you anywhere.

BIG GAME FISHING US\$

Full-Day (Up to 4 Persons)	4'700
Half-Day (Up to 4 Persons)	2'500
Additional Hour600
Additional Person300

* Including breakfast menu; Half-Day trip duration: 4 hours; Full-Day trip duration: 8 hours.
 ** Including fish preparation (grilled, steamed, sashimi)



SNORKELLING TRIP US\$

2,5 Hours (Up to 4 Persons)	1'700
Additional Hour600
Additional Person300

* Including 1 bottle of champagne or beers, canapés, fruit platter, juices.
 ** Including fish preparation (grilled, steamed, sashimi)

DOLPHIN CRUISE / SUNSET FISHING US\$

2 Hours (Up to 4 Persons)	1'600
Additional Hour600
Additional Person300

* Including 1 bottle of champagne or beers, canapés, fruit platter, juices.
 ** Including fish preparation (grilled, steamed, sashimi)

DESERT ISLAND DINNER CRUISE US\$

5 Hours (2 Persons)	6'000
Additional Hour600
Additional Person420

* Including BBQ dinner & non-alcoholic beverages. 2 hours cruising, 3 hours dinner.



CHARTERS US\$

Full-Day Charter (Up to 4 Persons)	4'700
Half-Day Charter (Up to 4 Persons)	2'500
Desert Island Surcharge	2'000
Additional Hour600
Additional Person300

* Including 1 bottle of champagne or beers, canapés, fruit platter, juices.
 ** Half-Day Charter duration: 4 hours, Full-Day Charter duration: 8 hours. Half-Day charters are from 09:30 to 13:30 and from 14:30 to 18:30.

TRANSFERS US\$

Cheval Blanc / Irufushi / Soneva Jani	1'400
Ifuru Domestic Airport	1'600
Maafaru Domestic Airport / Hurawalhi / Joali ..	2'200
Anantara Kihavah / Amilla Fushi / FSLG	2'500
Soneva Fushi / Finolhu	3'000
Male Airport / Waldorf Astoria / One&Only . . .	7'500

LUNCH / DINNER / VISITS US\$

Cheval Blanc / Irufushi / Soneva Jani	3'700
Hurawalhi / Joali	4'300
Anantara Kihavah / Amila Fushi	5'300
Four Seasons Landaa Giraavaru	5'300
Soneva Fushi / Finolhu	5'900



DHANA DHONI CRUISES

Embrace the care-free moment while diving, cruising or snorkeling from Dhana which provides you with a spacious and free environment. Dhana boasts a beautifully custom made bar suited for any occasion and can be an ideal boat for your sumptuous barbecue.

It is also the ideal boat to experience the traditional Maldivian Sunset Fishing where our local crew will whisper you their fishing secrets.

BIG GAME FISHING US\$

Full-Day (Up to 4 Persons)	4'000
Half-Day (Up to 4 Persons)	2'200
Additional Hour	500
Additional Persons	250

* Including breakfast menu;
Half-Day trip duration: 4 hours; Full-Day trip duration: 8 hours.

** Including fish preparation (grilled, steamed, sashimi)



DESERT ISLAND DINNER CRUISE US\$

5 Hours (2 Persons)	5'500
Additional Hour	500
Additional Person	420

* Including BBQ dinner & non-alcoholic beverages. 2 hours cruising, 3 hours dinner.

SNORKELLING TRIP US\$

2.5 Hours (Up to 4 Persons)	1'500
Additional Hour	500
Additional Person	250

* Including 1 bottle of champagne or beers, canapés, fruit platter, juices.

DOLPHIN CRUISE / SUNSET FISHING US\$

2 Hours (Up to 4 Persons)	1'400
Additional Hour	500
Additional Person	250

* Including 1 bottle of champagne or beers, canapés, fruit platter, juices.

** Including fish preparation (grilled, steamed, sashimi)

CHARTERS US\$

Full-Day Charter (Up to 4 Persons)	4'000
Half-Day Charter (Up to 4 Persons)	2'200
Desert Island Surcharge	2'000
Additional Hour	500
Additional Person	250

* Including 1 bottle of champagne or beers, canapés, fruit platter, juices.

** Half-Day Charter duration: 4 hours, Full-Day Charter duration: 8 hours. Half-Day charters are from 09:30 to 13:30 and from 14:30 to 18:30.



THULA SPEEDBOAT CRUISES

Thula is your intimate affair; fast and multipurpose, it's an all-rounder for any activity.

BIG GAME FISHING US\$

Full-Day (Up to 4 Persons)	3'700
Half-Day (Up to 4 Persons)	2'000
Additional Hour	450
Additional Person	250

* Including breakfast menu;
Half-Day trip duration: 4 hours; Full-Day trip duration: 8 hours.

** Including fish preparation (grilled, steamed, sashimi)



CHARTERS US\$

Full-Day Charter (Up to 4 Persons)	3'700
Half-Day Charter (Up to 4 Persons)	2'000
Additional Hour	450
Additional Person	250

* Including 1 bottle of champagne or beers, canapés, fruit platter, juices.

** Half-Day Charter duration: 4 hours, Full-Day Charter duration: 8 hours. Half-Day charters are from 09:30 to 13:30 and from 14:30 to 18:30.

SNORKELLING TRIP 1.5 HOURS US\$

45 mins Snorkeling (Up to 4 Persons)	700
Additional Hour	450
Additional Person	150

* Including fruit platter, soft drinks and water.

SNORKELLING TRIP 2.5 HOURS US\$

2 x 45 mins Snorkeling (Up to 4 Persons)	1'300
Additional Hour	450
Additional Person	250

* Including fruit platter, soft drinks and water.

TRANSFERS US\$

Cheval Blanc / Irufushi / Soneva Jani	700
Ifuru Domestic Airport	900
Maafaru Domestic Airport / Joali Resort	1'500
Anantara Kihavah / Amilla Fushi / FSLG	1'800
Soneva Fushi / Finolhu	2'300
Male Airport / Waldorf Astoria / One&Only	5'500

DOLPHIN CRUISE / SUNSET FISHING US\$

2 Hours (Up to 4 Persons)	1'200
Additional Hour	450
Additional Person	250

* Including 1 bottle of champagne or beers, canapés, fruit platter, juices.

** Including fish preparation (grilled, steamed, sashimi)

LUNCH / DINNER / VISITS US\$

Cheval Blanc / Irufushi / Soneva Jani	1'700
Hurawalhi / Joali	2'200
Anantara Kihavah / Amila Fushi	2'700
Four Seasons Landaa Giraavaru	2'700
Soneva Fushi / Finolhu	3'700



KUN'BA & MEYSA SPEEDBOAT CRUISES

Whether for a snorkel trip or a transfer, Kun'Ba and Meysa are both speedboats that will take you to your destination in style and comfort.

DESERT ISLAND SLUMBER US\$

Private Patch of Paradise for the Day

Orimasvaru Island (2 Persons)1'200

* Including simple set up, fruit platter, soft drinks and water.

DESERT ISLAND LUNCH / DINNER US\$

3 Hours (2 Persons) 3'200

Additional Person 420

Additional Hour400

* Including BBQ lunch / dinner & non-alcoholic beverages.

SNORKELLING TRIP 1.5 HOURS US\$

45 mins Snorkeling (Up to 4 Persons) 600

Additional Hour 400

Additional Person150

* Including fruit platter, soft drinks and water.

SNORKELLING TRIP 2.5 HOURS US\$

2 x 45 mins Snorkeling (Up to 4 Persons)1'000

Additional Hour400

Additional Person 250

* Including fruit platter, soft drinks and water.

DOLPHIN CRUISE / SUNSET FISHING US\$

2 Hours (Up to 4 Persons)1'000

Additional Hour400

Additional Person 250

* Including beers, canapés, fruit platter, juices.

** Including fish preparation (grilled, steamed, sashimi)

SPEEDBOAT RENTAL US\$

1 Hour400



CHARTERS US\$

Full-Day Charter (Up to 4 Persons)3'100

Half-Day Charter (Up to 4 Persons)1'600

Additional Hour400

Additional Person 250

* Including beers, canapés, fruit platter, juices.

Charter duration: 4 hours, Full-Day charter duration: 8 hours

TRANSFERS US\$

Cheval Blanc / Irufushi / Soneva Jani 550

Ifuru Domestic Airport800

Maafaru Domestic Airport / Joali Resort1'300

Anantara Kihavah / Amilla Fushi / FSLG1'500

Soneva Fushi / Finolhu 2'000

Male Airport / Waldorf Astoria / One&Only ... 4'500

LUNCH / DINNER / VISITS US\$

Cheval Blanc / Irufushi / Soneva Jani1'600

Hurawalhi / Joali Resort 2'000

Anantara Kihavah / Amila Fushi 2'400

Four Seasons Landaa Giraavaru 2'400

Soneva Fushi / Finolhu3'100



PRIVATE SEAPLANE EXCURSIONS

EXPLORE THE BEAUTIFUL ARCHIPELAGO OF THE MALDIVES FROM ABOVE WITH A PRIVATE SEAPLANE EXCURSION

Velaa's private customised De Havilland Twin Otter seaplane can comfortably carry nine passengers with personalised itineraries, allowing the opportunity to see several areas of the Maldives turquoise vistas.

Reach remote uninhabited islands and fly over some of the most magnificent natural wonders of the Indian Ocean, all in the luxury of your own private seaplane.

WHALE SHARK ENCOUNTER

MANTA ENCOUNTER

BEST DIVE SPOTS IN THE MALDIVES

BEST SURF SPOTS IN THE MALDIVES



All prices are quoted in US Dollars and subject to 10% Service charge and 12% T-GST. All water activities are subject to weather conditions. The Management reserves the right to cancel any activities at any given time in view of your safety.

Cancellation policy: A 50% cancellation charge is applicable to activities not cancelled 6 hours prior to the start of the activity. A 100% no-show charge will apply if the activity is cancelled less than one hour prior to the start of the activity. The cancellation period applies to Recreation operating hours (09:00-18:00).



SPORTS ACTIVITIES

Rain or sunshine, our covered tennis & squash courts are ready for your game, whether playing with friends or our resident Pro. The recreation arena offers other activities including squash, badminton, beach volleyball and a 6 metre climbing wall.



All prices are quoted in US Dollars and subject to 10% Service charge and 12% T-GST. All water activities are subject to weather conditions. The Management reserves the right to cancel any activities at any given time in view of your safety. Damaged equipment will be charged.

Cancellation policy: A 50% cancellation charge is applicable to activities not cancelled 6 hours prior to the start of the activity. A 100% no-show charge will apply if the activity is cancelled less than one hour prior to the start of the activity. The cancellation period applies to Recreation operating hours (09:00-18:00).

It is the resorts policy to accept bookings for tennis, squash and badminton only for maximum 2 days in advance to give everyone a fair chance to be able to play.



SPORTS ACTIVITIES

TENNIS

US\$

Court Rental	120
Private Lesson	175
* All per 1 hour	



SQUASH

US\$

Court Rental	100
Private Lesson	175
* All per 1 hour	



BADMINTON

US\$

Court Rental	80
Private Lesson	175
* All per 1 hour	

GAMES AVAILABLE UPON REQUEST

- Petanque
- Beach tennis
- Speedminton
- Croquet



VELAA MARINE CENTRE

Venture through the glistening water of the Atoll to discover the bustling schools of fish and abundant coral diversity. Only 15 mins away from the Resort awaits the most untouched reefs of Noonu Atoll where you will be in the knowledgeable hands of our specialised marine team.



All prices are quoted in US Dollars and subject to 10% Service charge and 12% T-GST. All water activities are subject to weather conditions. The Management reserves the right to cancel any activities at any given time in view of your safety.

Cancellation policy: A 50% cancellation charge is applicable to activities not cancelled 6 hours prior to the start of the activity. A 100% no-show charge will apply if the activity is cancelled less than one hour prior to the start of the activity. The cancellation period applies to Recreation operating hours (09:00-18:00).



SNORKELLING

PRIVATE SNORKELLING EXCURSION WITH MARINE BIOLOGIST ON SPEEDBOAT

Let's venture through the glistening waters of Noonu Atoll and find a reef with bustling schools of fish and abundant coral diversity. We will take you to the best snorkel sites seeking any of your favorite marine life. This is a nice quick boat ride to your destination reachable in 15 to 20 minutes.



1.5 Hours Trip / 45 mins Snorkelling (Up to 4 Persons)	US\$ 700
Additional person	US\$ 150
2.5 Hours Trip / 2 x 45 mins Snorkelling (Up to 4 Persons)	US\$ 1'300
Additional Person	US\$ 250

GUIDED HOUSE REEF SNORKELLING TOUR

Be guided by our marine biologist who will share with you her passion as she shows you all the hidden gems that our house reef boasts.

60 mins / per Person (Min 2 Persons)	US\$ 100
--	----------



DISCOVER SNORKELLING LESSON

Experience your first glimpse underwater and discover the friendly Maldivian marine life. After seeing the immense beauty of the Ocean there will be no stopping you.

60 mins / per Person (6 Years Old and Above)	US\$ 150
* Lesson is conducted at the lagoon in front of Dive Center.	

COMBINED SNORKELLING TRIP WITH MARINE BIOLOGIST

Hop on a short boat trip and join our marine biologist for a snorkel at our close by reef Orimasvaru. Available on Tuesday, Thursday, Sunday from 09:00 to 10:00.

45 mins Snorkelling / per Person (Min 2 Persons)	US\$ 150
--	----------



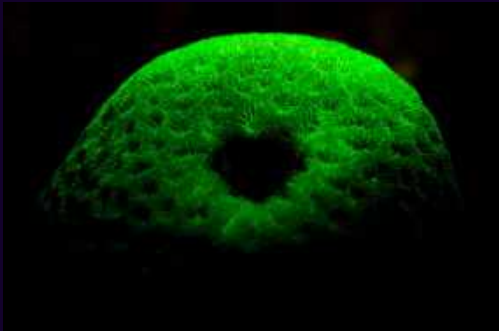
SNORKELING

LUXURY PRIVATE SNORKELLING TRIP

Treat yourself to a luxury private experience. Aboard our yacht Mithuna or most luxury traditional Batheli Anna, you will explore some of the most fascinating coral reefs with your private guide. Enjoy the cruise with canapes and champagne.



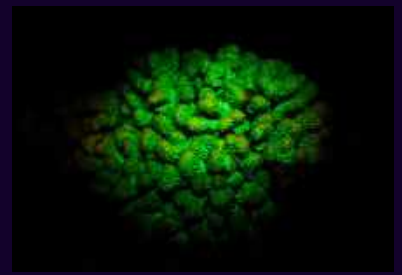
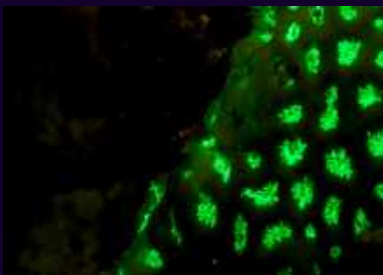
2,5 Hours Trip / 2 x 45 mins Snorkelling (Up to 4 Persons) US\$ 1'900
 Additional Person US\$ 350



FLUORESCENT NIGHT SNORKELLING

See the reef in a new light with colours you had never dreamed possible. Equipped with a specialized mask filter and a blue torch, the corals will glow with colors that are invisible to the naked eye. Join us today for an entirely new snorkelling experience!
 (15 years old and above)

45 mins / per Person / House Reef (Min 2 Persons)US\$ 200
 45 mins / per Person / by Boat (Min 2 Persons)US\$ 300



VELAA HOUSE REEF SNORKEL SITES







Reef Access Channels
House Reef Sites

Depth at Velaa House Reef Ranges from 1 to 24 m




COMMONLY SEEN FISH AT NOONU ATOLL

FISH IDENTITY	SCIENTIFIC NAME	HABITAT	FUN FACT
<p>Blue-fin jack</p> 	Caranx melampygus	Seen circling around the islands amongst the reef crest and reef slope in search of food. Very fast and robust fish.	Known as roving predators, they create distracting situations to capture their unaware prey.
<p>Black-spotted Pufferfish</p> 	Arothron nigropunctatus	Hides during the day and is very shy. Active at night seen in sand flats feeding on invertebrates. Variable in colour from grey to yellow.	When in danger its defense mechanism reacts quickly inflating its body and it becomes a suspended looking ball. They eventually deflate once the danger has subsided.
<p>Sabre squirrelfish</p> 	Sargocentron spiniferum	Found under rocks and overhangs, seen solitary.	Nocturnal fish, feeding on crabs, small fish and shrimp at night.
<p>Oriental sweetlips</p> 	Plectorhinchus vittatus	Found in schools or solitary under boulders and overhangs.	Sweetlip juveniles are very different to their adult form; they go through many changes of appearance and behaviour before becoming an adult. The juvenile Oriental sweetlips looks like a little dancing fish.
<p>Dogtooth tuna</p> 	Gymnosarda unicolor	Generally found solitary circling around reefs at a fast pass or in the deep blue.	The tuna fish family are built for speed and are among the fastest fish in the ocean.

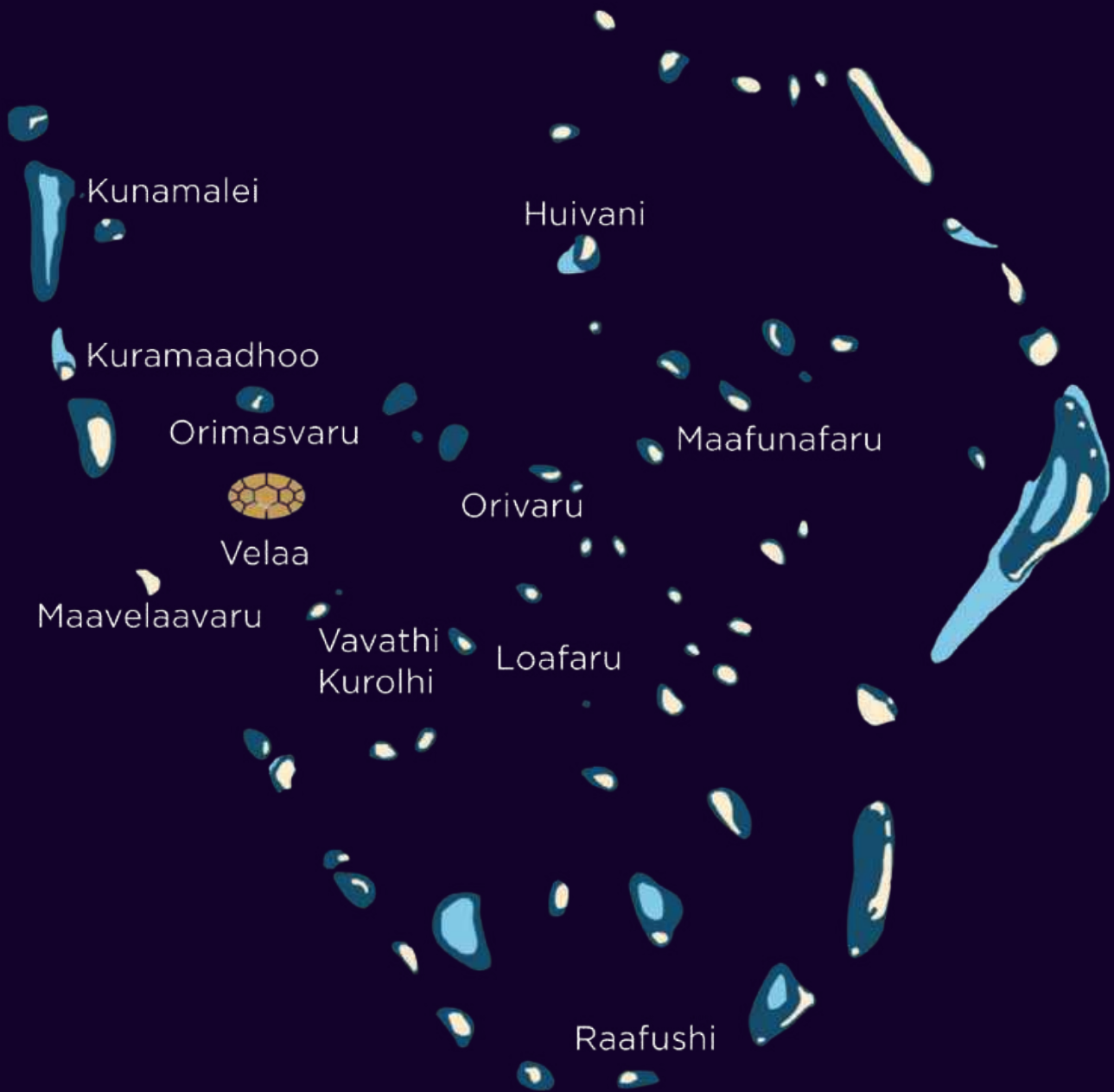


COMMONLY SEEN FISH AT NOONU ATOLL

FISH IDENTITY	SCIENTIFIC NAME	HABITAT	FUN FACT
<p>Maldivian anemonefish</p> 	Amphiprion nigripes	Hides inside the sea anemones (<i>Heteractis magnifica</i>). Seen on shallow reefs up to 15m depth.	Only seen in the Maldives and small communities seen in Sri Lanka. They use the anemone as a home and shelter from predators because the anemone stings other species while the anemone fish are immune to these stings.
<p>Parrot fish</p> 	Scaridae	Seen on reefs, sleep in crevices and caves at night. Juveniles are solitary or form small groups.	Very colourful, you can hear them feeding on corals which the algae is growing on, helping to keep the reef healthy. They contribute to producing the white sandy beaches we have here in the Maldives.
<p>Blue-Powder Surgeon Fish</p> 	Acanthurus Leucosternon	Found in most clear water habitats to 20m depth.	Given the name surgeon fish because of the spine which is said to be as sharp as a surgeon's knife. Very common to see beautiful large schools of these fish.
<p>Moorish idol</p> 	Zanclus cornutus	Seen in shallow reefs and deep outer walls. Usually seen alone or in pairs.	Larvae can live more than three months allowing it to drift to near and far locations by the oceans currents allowing it to be distributed throughout the Indo-Pacific.
<p>Vermilion Rock Cod</p> 	Cephalopholis miniata	Seen mostly in coral reefs or rocky bottoms up to 20m deep, normally in small groups.	They are territorial, with one male and 12 females in each group, each female has its own area and the male visits them all individually on a daily basis.



VELAA PRIVATE ISLAND NEARBY SNORKEL SITES



VELAA PRIVATE ISLAND NEARBY SNORKEL SITES

NO.	DIVE SITE	DESCRIPTION
1	KUNNAMALEI	Patchy reef with sections of soft leather coral garden and large boulder corals providing habitats for numerous marine life. Resident Hawksbill Turtles can be seen eating sponges or sleeping under a secluded rock. This is also a good site to spot a species from the ray family on the top reef or in the blue.
2	KURAMAADHOO	Shallow top reef with steep drop off and overhangs, current is usually medium to strong. This channel snorkel site gives an opportunity to see an abundance of schooling Bannerfish, Redtoothed Triggerfish and practise your freediving skills to see what hides amongst the overhangs.
3	ORIMASVARU	A gentle sloping reef allows you to view the shallow and deep sections of the reef, giving a a greater opportunity to spot the vast biodiversity of marine life Maldives has to offer. Anemone Fish, Red Snappers, Blue Striped Snappers and Fusiliers are commonly seen.
4	MAAVELAAVARU	This shallow top reef is a perfect site for kids as they can spot all their favorite Finding Nemo characters amongst the colorful boulder corals. The steep wall provides an opportunity to see some pelagic fish such as Dogtooth Tuna, Bluefin Trevally and Eagle Rays in the blue.
5	VAVATHI KUROLHI	A giri with a good variety of corals and sea life. Keep an eye out for the shy Whitetip Reef Shark swimming through the reef or hiding amongst a coral boulder. This site offers a vast abundance of schooling Bannerfish, Redtoothed Triggerfish and Fusiliers.
6	ORIVARU	Good hard coral coverage, Octopus and Lobsters can be seen with a closer look to the reef. This site has a large diversity of the beautiful and brightly colored Butterflyfish traveling in pairs amongst the numerous coral lifeforms.
7	LOAFARU	Gentle sloping reef with abundant hard corals and colourful fishes such as Oriental Sweetlips, Red Snappers and Fusiliers.
8	RAAFUSHI	One of the best snorkel sites in Noonu Atoll. This site provides an array of colorful boulder corals on the shallow top reef and sea fans can be seen growing on the wall. Keep an eye out for the Hawksbill Turtle, Eagle Rays and the elusive Painted Spiny Lobster.
9	MAAFUNAFARU	This fascinating reef displays unparalleled unique coral structures. The reef is home to numerous marine life and is perfect to spot the Maldivian Anemone Fish, Groupers, Midnight Snappers, occasional baby Reef Sharks and the majestic Angelfish.
10	HUIVANI	Patchy reef with sandy bottom. Good chance to see juvenile Reef Sharks. Hawksbill Turtles can be easily missed as they are well camouflaged amongst the reef so be sure to keep a vigilant eye on the reef.



CORAL RESTORATION PROJECT

The Maldives' famous turquoise crystal clear waters wouldn't be possible without the exquisite and fragile coral reefs. Often referred to as the 'Rainforests of the Sea' because of their richness in biodiversity. Coral reefs are the building blocks for shelter, protection, home and a food source for its inhabitants. Its success is measured through a perfect equilibrium for its survival. We consider ourselves fortunate to be the guardians of the sea that encompasses our island home. We understand the need to safeguard such a precious and finite resource. Our dedicated Marine Team is currently implementing numerous coral restoration programs in order to conserve our reef. One such program is our Coral Restoration Program.

ADOPT A CORAL LINE OR BECOME A MARINE BIOLOGIST FOR A DAY

CORAL ADOPTION

Let our passionate Marine Team introduce you to Velaa's Coral Restoration Project which is unmatched in design and scale in the Maldives. Make your vacation memorable as you add your individual coral line to Velaa's intrinsic rainforest of corals. Your conservation efforts will not go unnoticed, a coral adoption certificate will be given for your generosity to our reef, along with biannual updates of your corals development. On your next visit to Velaa our Marine Biologist will take you on a complimentary coral observation snorkel, giving you the chance to observe the growth of your very own corals.



2.5 Hours / per Person US\$ 350

CORAL BIOLOGIST EXPERIENCE

Journey on an exploration of Velaa's hanging coral gardens via snorkel or SCUBA. Our resident Coral Biologist and Marine Team would be delighted to share their knowledge and expertise into their daily marine conservation contributions with you. Learn about the foundation of the Maldives and how it plays an important role into everyday life all around the world.

Feel like a Marine Biologist for today !

4 Hours / per Person (Maximum 4 Persons). US\$ 400



VELAA MARINE CENTRE

MARINE BIOLOGY DEMONSTRATION SESSIONS

The Marine Biologists at Velaa are very passionate about their work and are more than happy to conduct marine themed presentations from the variety of topics available. The presentations can be conducted in the Avi bar upstairs, or at the Marine Centre or even in the comfort of your own villa. (24 hours' notice for a presentation is required)

SWIM LIKE A MERMAID, PHOTOSHOOT

Welcome to the mysterious Merworld! If you or your children have ever dreamt of becoming a majestic little mermaid we can make that dream a reality! Our marine biologist mermaids will teach you how to swim with a monofin and twirl around in the ocean or poolside.

There are plenty of opportunities to pose in your mermaid tail. This is an activity that can be done in the privacy of your villa or in our lagoon.



- 45 mins Pool and Lagoon / per Person (Including Pictures)US\$ 250
- 1.5 Hour Deserted Island Monofin Snorkel Session / per Person (Including Pictures). US\$ 450



LIBRARY

You are invited to unwind from your island adventures by enjoying the quiet exploration of over 1,000 carefully selected books and magazines of various interests, all arranged inside a smart interior.

Take the opportunity to reconnect with your friends and family back home with the high speed wireless Internet, or simply enjoy a cup of coffee or tea while reading a book of your choice in one of our comfy seats.

