

BVLGARI

RESORT DUBAI





BVLGARI
RESORT DUBAI
منتجع دبي

BVLGARI

RESORT DUBAI

AN URBAN OASIS

Exclusively situated on the seahorse shaped island of Jumeira Bay, connected by a 300m bridge to central Dubai, the resort is the destination of choice for visitors seeking the solitude of an island escape, the residential feeling of a private house, yet situated just minutes from the heart of the vibrant city and its cultural attractions.



- 1.3 million sqm property
- Designed by Antonio Citterio Patricia Viel
- Mediterranean village charm
- Seahorse shaped island
- Exceptional guest comfort and services
- 10 minutes away from Dubai's golden mile
- 20 minutes away from the Dubai International Airport (DXB)
- 10 minutes away from Dubai Mall



THE BVLGARI RESORT & RESIDENCES OVERVIEW

- 101 hotel rooms and suites
- 20 stand-alone villas with private pool
- Bvlgari's first-ever Marina and Yacht Club
- 7 dining venues
- First ever Bvlgari Little Gems Club
- Hosting the third Il Cioccolato, Bvlgari chocolate boutique
- First Bvlgari hotel featuring a Bvlgari boutique on site
- 1,700 sqm Spa facilities
- Beach facilities and outdoor pool area
- 7 events venues including a ballroom with sea views





ROOMS

Whether guests wish to soak up the resort's sunsets over the Arabian Gulf, admire the majesty of the world's tallest tower nestled amongst the eye-catching Dubai skyline, or enjoy the European ambiance of the Riviera style marina and beach club, there are rooms to suit every taste. Each room and suite has walk-in wardrobe, state-of-the-art technology and its own private balcony, - a unique feature of the Dubai resort.

SUPERIOR ROOM

17 units
55 sqm indoor / 592 sqft indoor
15 sqm terrace / 161 sqft terrace
Connecting to Superior Room / Junior Suite /
Deluxe Suite / Bulgari Suite

The Superior Rooms, themed throughout the resort as the very 'Made In Italy' style rooms, are light oak paneled, with cream tapestry design to create a light, bright, open space; a true blend of Italian modernity style and simplicity

- Capacity of 2 Adults
- Private balcony
- Outdoor relaxation area
- Walk-in wardrobe
- Marble bath
- Walk-in shower
- Bulgari Hotels & Resorts amenities
- 55"TV

DELUXE BEACH VIEW ROOM

36 units
55 sqm indoor / 592 sqft indoor
15 sqm terrace / 161 sqft terrace
Connecting to Deluxe Beach View Room /
Junior Suite / Deluxe Suite / Bulgari Suite

The Deluxe Beach View Rooms enjoy glorious vistas of the resort's sandy beach. To maximize the natural light and create a bright open space, the rooms are designed with high ceilings and large windows along with light oak paneled.

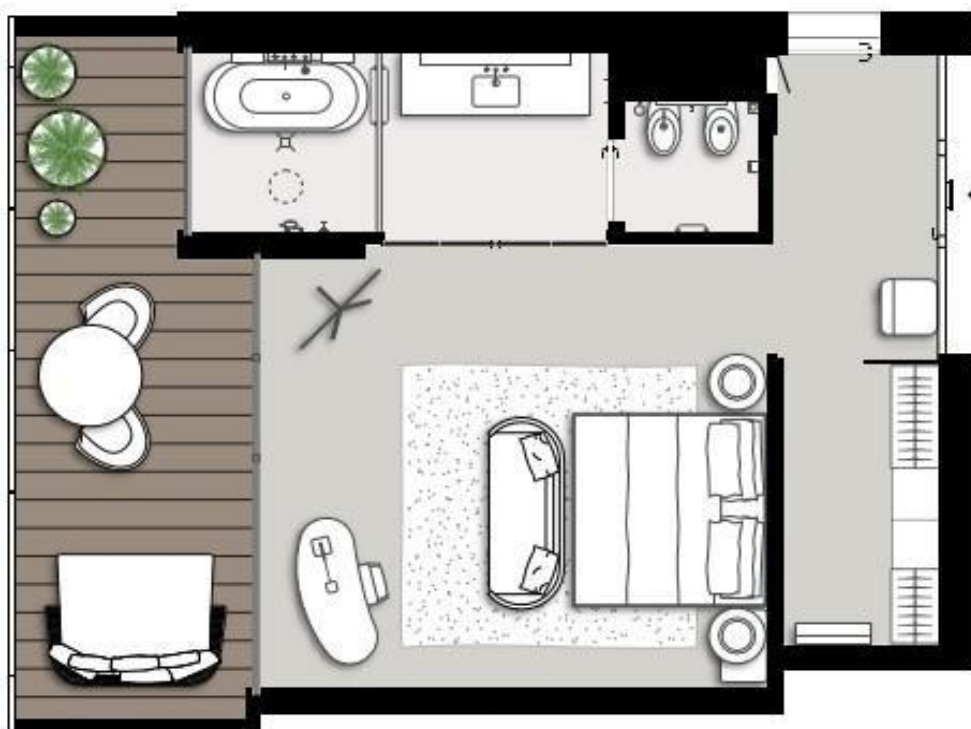
- Over 800 channels
- Laundry and valet services
- Digital room control
- iPod docking station
- High speed Wi-Fi
- Signature trunk mini bar
- Safety box and jewelry tray
- 24-hour private dining service

PREMIUM ROOM

21 units
55 sqm indoor / 592 sqft indoor
15 sqm terrace / 161 sqft terrace
Connecting to Premium Room /
Junior Suite / Deluxe Suite / Bulgari Suite

The Premium Rooms are thoughtfully curated to blend Italian design and elegance, with natural light and the beauty of the oak paneling. These rooms are the perfect place to enjoy the peace and the quiet from the private balcony.

- Yoga mat
- Beach bag
- Twin room layout option available





SUITES

Each suite, designed to offer a sense of homecoming, has a Bulgari-created entryway alcove with Arabian inspired light fixtures, which shines in the shapes of the Bulgari's mesh pattern onto the alcove wall, and a spacious bathroom with a luxurious marble bathtub and separate shower.

JUNIOR SUITE

16 units
80 sqm indoor / 861 sqft indoor
25 sqm terrace / 269 sqft terrace
Connecting to Superior Room / Deluxe
Beach View Room / Premium Room

Distinguished by a large living and lounge area, the suite boasts views of either the Dubai skyline, where guests can spot the world's tallest tower or enjoy the open vistas of the Arabian Gulf.

- Capacity of 2 Adults
- Possibility to add 1 extra-bed
- Private balcony
- Outdoor relaxation area
- Walk-in wardrobe
- Marble bath
- Walk-in shower
- Bulgari Hotels & Resorts amenities
- 55"TV
- Over 800 channels
- Laundry and valet services
- Digital room control
- iPod docking station
- High speed Wi-Fi
- Signature trunk mini bar
- Safety box and jewelry tray
- 24-hour private dining service
- Yoga mat
- Technogym weights
- Beach bag

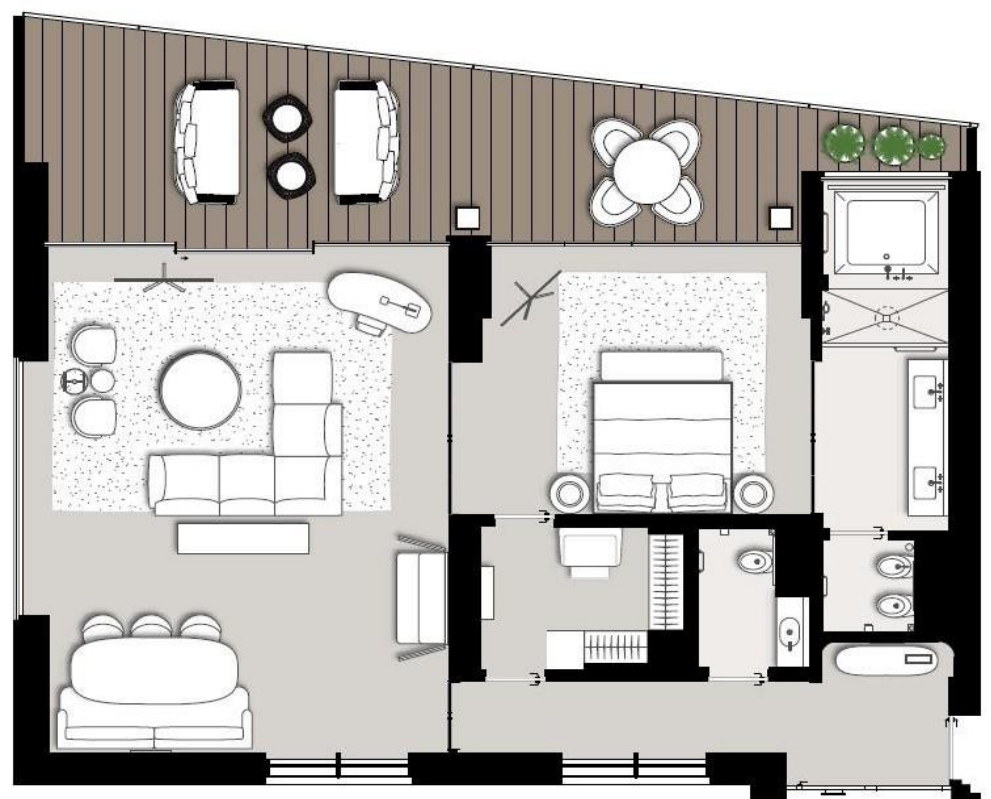


DELUXE SUITE

6 units
105 sqm indoor / 1130 sqft indoor
30 sqm terrace / 323 sqft terrace
Connecting to Superior Room / Deluxe
Beach View Room / Premium Room

The larger Deluxe Suite offers a spacious living room and master bedroom. As a unique feature of the rooms and suites, the Deluxe Suites provide a large balcony to enjoy the peace of the urban oasis.

- Capacity of 2 Adults
- Possibility to add 1 extra-bed
- Private balcony
- Outdoor relaxation area
- Walk-in wardrobe
- Jacuzzi
- Walk-in shower
- Bulgari Hotels & Resorts amenities
- 55"TV
- Over 800 channels
- Laundry and valet services
- Digital room control
- iPod docking station
- High speed Wi-Fi
- Fully equipped bar
- Safety box and jewelry tray
- 24-hour private dining service
- Yoga mat
- Technogym weights
- Beach bag
- Devialet sound system





GARDEN ROOM AND SUITES

Where nature and Italian elegance meet, the Garden Rooms and Suites are eight meticulously designed spaces offering a captivating garden oasis and direct access to the pristine beachfront. Experience the pinnacle of luxury and choose between our three Garden room categories:

GARDEN ROOM

1 unit
55 sqm indoor / 592 sqft indoor
49 sqm garden / 527 sqft garden

The Garden Room, provides an intimate retreat with direct garden access. Step outside and immerse yourself in the lush beauty that surrounds you, while having the resort's sandy beach at your doorstep.

- Capacity of 2 Adults
- Private garden
- Outdoor lounge area
- Walk-in wardrobe
- Marble bath
- Walk-in shower
- Bulgari Hotels & Resorts amenities
- 55"TV
- Over 800 channels
- Laundry services
- Digital room control
- iPod docking station
- High speed Wi-Fi
- Signature trunk mini bar
- Safety box and jewelry tray
- 24-hour private dining service
- Yoga mat
- Beach bag

GARDEN JUNIOR SUITE

1 unit
80 sqm indoor / 861 sqft indoor
70 sqm garden / 753 sqft garden

For more space and luxury, the Garden Junior Suite offers an elevated experience. This beautifully appointed suite provides an extended sanctuary where you can unwind in style. The garden vistas are a constant reminder of the natural beauty that envelopes the resort.

- Capacity of 2 Adults
- Private garden
- Outdoor lounge area
- Walk-in wardrobe
- Marble bath
- Walk-in shower
- Bulgari Hotels & Resorts amenities
- 55"TV
- Over 800 channels
- Laundry services
- Digital room control
- iPod docking station
- High speed Wi-Fi
- Signature trunk mini bar
- Safety box and jewelry tray
- 24-hour private dining service
- Yoga mat
- Technogym weights
- Beach bag

GARDEN DELUXE SUITE

1 unit
105 sqm indoor / 1130 sqft indoor
114 sqm garden / 1227 sqft garden

At the pinnacle of opulence, the Garden Deluxe Suite provides the utmost comfort. With generous living spaces, opulent furnishings, and a garden that feels like your own, these suites are a testaments to refined living.

- Capacity of 2 Adults
- Private garden
- Outdoor lounge area
- Walk-in wardrobe
- Jacuzzi
- Walk-in shower
- Bulgari Hotels & Resorts amenities
- 55"TV
- Over 800 channels
- Laundry services
- Digital room control
- iPod docking station
- High speed Wi-Fi
- Signature trunk mini bar
- Safety box and jewelry tray
- 24-hour private dining service
- Yoga mat
- Technogym weights
- Beach bag



THE BULGARI SUITE

The Bulgari Suite has a spacious living area, magnificent marble bathroom, separate powder room and a cozy work space for those who need it. The suite has a stunning wrap-around terrace and full sea view in addition to a two-person Jacuzzi, making it the perfect place to unwind and enjoy the views out to the Arabian Gulf. Styled with a sense of 'home', with the feeling more of a private residence, the generous living room comes with indoor and outdoor dining facilities, making the space ideal for social gatherings in addition to relaxed in room private dining.

5 units
 120 sqm indoor / 1292 sqft indoor
 60 sqm terrace / 646 sqft terrace
 Connecting to Premium Room /
 Superior Room / Deluxe Beach View Room

- Capacity of 2 Adults
- Possibility to add 1 extra-bed
- Private balcony with 180° view
- Outdoor relaxation area
- Indoor living room
- Outdoor dining area
- Indoor dining area
- Signature Bulgari bookshelf
- Walk-in wardrobe
- Jacuzzi
- Walk-in shower
- Bulgari Hotels & Resorts amenities
- 55" TV
- Over 800 channels
- Laundry and valet services
- Digital room control
- iPod docking station
- Devialet sound system
- High speed Wi-Fi
- Fully equipped bar
- Safety box and jewelry tray
- 24-hour private dining service
- Yoga mat
- Technogym weights
- Berluti shoeshine service
- Beach bag





ONE BEDROOM BEACH VILLA

The One Bedroom Beach Villa with temperature-controlled outdoor private pool is situated just steps from the beachfront and offers fantastic Arabian Gulf views. It encompasses a spacious living room, a master bedroom with a king size bed, a luxurious bathroom furnished with a sunken marble bathtub, a handheld shower and a separate shower chamber. The villa offers a fully-equipped kitchenette and private parking space. The anticipatory and personalized butler service ensures that each guest's unique preferences are known and understood at the resort. The villa has an option to connect to a Two Bedroom Beach View Villa, giving the perfect balance of togetherness and privacy.

4 units
175 sqm / 1884 sqft
Connecting to Two Bedroom Beach Villa

- Capacity of 2 Adults
- Possibility to add 1 extra-bed
- Private temperature-controlled pool
- 24 hours personal butler
- Outdoor relaxation area
- Indoor living room
- Indoor & outdoor dining area
- Devialet sound system
- Walk-in wardrobe
- Marble bath
- Walk-in shower
- Bulgari Hotels & Resorts amenities
- 55"TV
- Over 800 channels
- Laundry & valet services
- Private parking & entrance
- Digital room control
- iPod docking station
- Pantry kitchen
- Berluti shoeshine service
- Technogym weights
- Yoga mat
- In-villa personal training/yoga/pilates
- High speed Wi-Fi
- Fully equipped bar
- Safety box and jewelry tray
- 24-hour private dining service
- Beach bag





TWO BEDROOM BEACH VILLA

This beach-front accommodation is perfect for families or friends travelling together, allowing to connect with One Bedroom Beach View Villa. It includes one king size bedroom, a large living space and a second independent twin bedroom. The living areas feature a full-length window frontage with sliding doors opening onto the large patio with a temperature-controlled outdoor private pool and an outdoor dining space. The Two Bedroom Beach Villa offers a spacious living room, writing desk, walk-in wardrobe, fully-equipped kitchenette, a domestic room with a bathroom and parking space. For visitors of the guests, the villa features a separate powder room.

8 units
250 sqm / 2691 sqft
Connecting to One Bedroom Beach Villa

- Capacity for 4 Adults
- Possibility to add 1 extra-bed
- Private temperature-controlled pool
- 24 hours available personal butler
- Outdoor relaxation area
- Indoor living room
- Outdoor & indoor dining area
- Devialet sound system
- Walk-in wardrobe
- Marble bath
- Walk-in shower
- Bulgari Hotels & Resorts amenities
- 55"TV
- Over 800 channels
- Laundry & valet services
- Private parking & entrance
- Digital room control
- iPod docking station
- Domestic room
- Pantry kitchenette
- Berluti shoeshine service
- Technogym weights
- Yoga mat
- In-villa personal training/yoga/pilates
- High speed Wi-Fi
- Fully equipped bar
- Safety box and jewelry tray
- 24-hour private dining service
- Beach bag





TWO BEDROOM SKYLINE VILLA

With panoramic Dubai skyline views, this Two Bedroom Skyline Villa includes one king size bed, a large living space and a second, independent, twin bedroom. The villa offers a spacious living room, writing desk, walk-in wardrobe, fully-equipped kitchenette, a maid's room with a bathroom and parking space. For visitors of the guests, the villa offers a separate powder room. The living areas feature a full-length window frontage with sliding doors opening onto the large patio with a temperature-controlled outdoor private pool and an outdoor dining space.

2 units
250 sqm / 2691 sqft
No connection

- Capacity for 4 Adults
- Possibility to add 1 extra-bed
- Private temperature-controlled pool
- 24 hours available personal butler
- Outdoor relaxation area
- Indoor living room
- Outdoor & indoor dining area
- Devialet sound system
- Walk-in wardrobe
- Marble bath
- Walk-in shower
- Bulgari Hotels & Resorts amenities
- 55" TV
- Over 800 channels
- Laundry & valet services
- Private parking & entrance
- Digital room control
- iPod docking station
- Domestic room
- Pantry kitchenette
- Berluti shoeshine service
- Technogym weights
- Yoga mat
- In-villa personal training/yoga/pilates
- High speed Wi-Fi
- Fully equipped bar
- Safety box and jewelry box
- 24-hour private dining service
- Beach bag





THREE BEDROOM SKYLINE VILLA

With a spectacular view of the splendid Dubai's skyline, the Three Bedroom Skyline Villa features a grand entrance foyer, open-plan living space with bar and dining area connected to a private-service kitchenette and temperature-controlled outdoor private pool to bathe in, with uninterrupted luxury. The master bedroom offer dedicated en-suite bathrooms and walk-in wardrobe. Personalized round-the-clock service is provided by a team of dedicated butlers. The villa comprises of a maid's room, en-suite bathroom, a powder room for the guests' visitors and personal parking space.

5 units
315 sqm / 3991 sqft
No connection

- Capacity of 6 Adults
- Private temperature-controlled pool
- Possibility to add 1 extra-bed
- 24 hours available personal butler
- Outdoor relaxation area
- Indoor living room
- Outdoor & indoor dining area
- Devialet sound system
- Walk-in wardrobe
- Marble bath
- Walk-in shower
- Bulgari Hotels & Resorts amenities
- 55"TV
- Over 800 channels
- Laundry & valet services
- Private parking & entrance
- Digital room control
- iPod docking station
- Domestic room
- Pantry kitchen
- Berluti shoeshine service
- Technogym weights
- Yoga mat
- In-villa personal training/yoga/pilates
- High speed Wi-Fi
- Fully equipped bar
- Safety box and jewelry tray
- 24-hour private dining service
- Beach bag



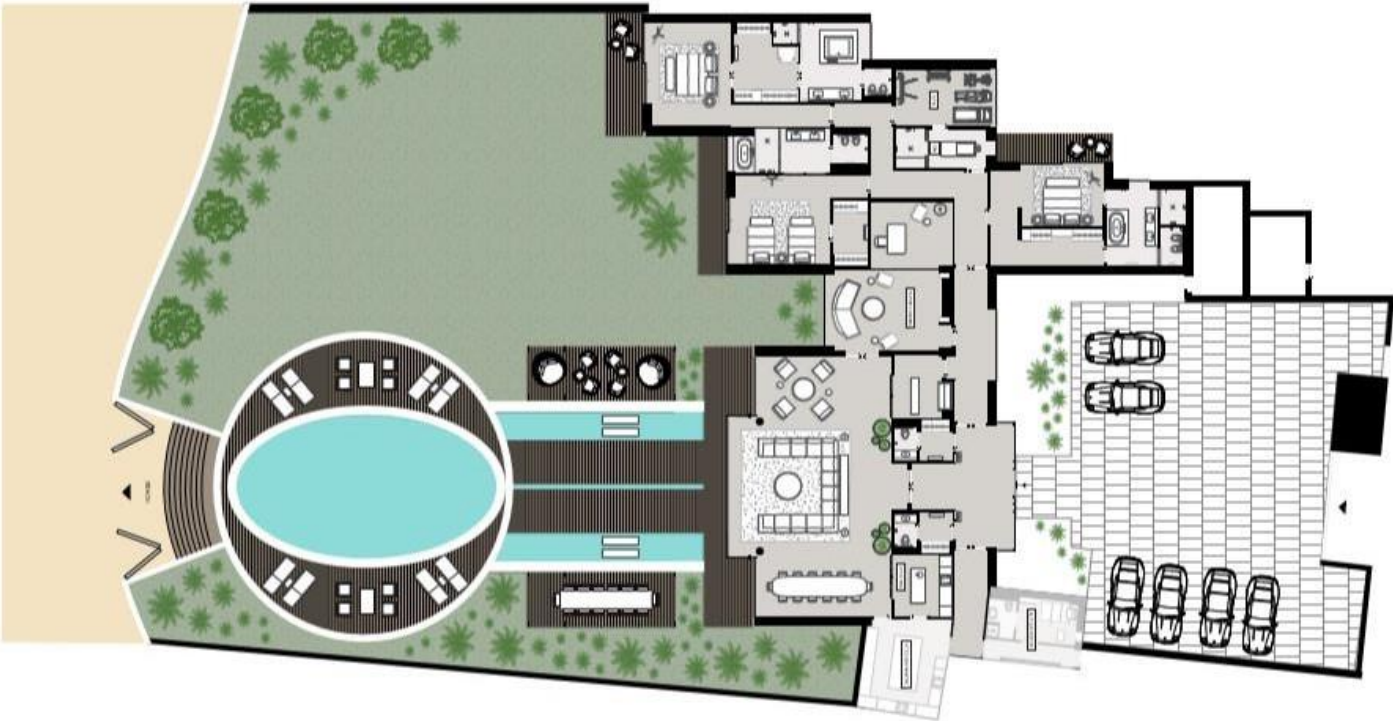


THE BULGARI VILLA

The spectacular Bulgari Villa is the supreme representation of elegance and privacy. With its own private beach, dedicated entrance and vast private lawn starring a marvelous oval pool, it offers unobstructed ocean views, the perfect spot to enjoy the sunset on the endless ocean. Located in the private east extreme of the resort, it features selective in-villa wellness facilities such as spa, hammam, gym or in-room jacuzzi. The villa also provides additional services with its own private home cinema, full equipped bar or the two available kitchens. Guests can complete the exclusive experience thanks to their private butlers and a 24 hours chef available on demand. To finalize, an adjacent two-bedroom beach villa can extend further the space and capacity for larger private gatherings.

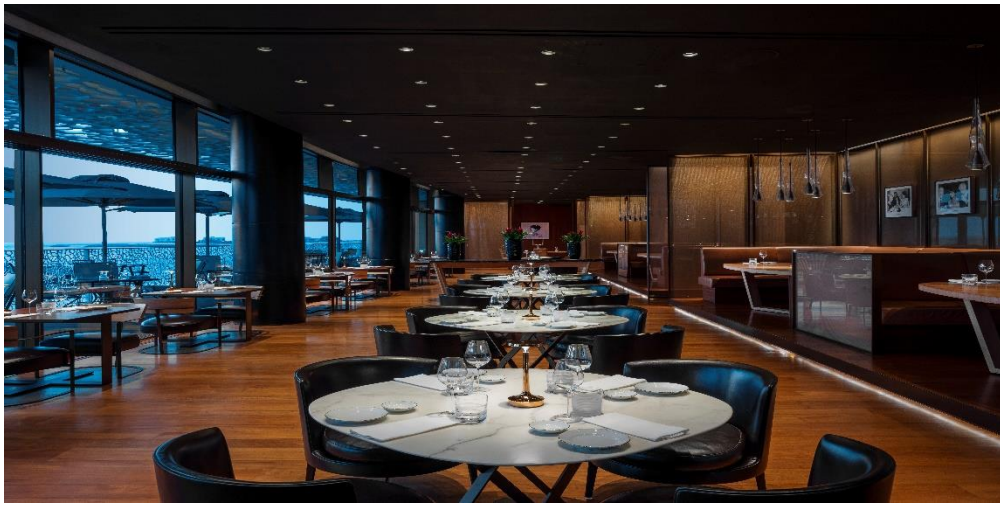
1 unit
 540 sqm indoors / 5813 sqft indoors
 500 sqm outdoors / 5382 sqft outdoors
 Connecting to Two Bedroom Beach Villa

- Capacity of 6 Adults
- Possibility to add 1 extra-bed
- 2 Personal butlers 24 hours available
- Fully equipped professional kitchen
- Show-cooking kitchenette room
- 14 seats indoor dining area
- 12 seats outdoor dining area
- Indoor living room & relaxation area
- Devialet sound system
- Walk-in wardrobe
- Marble baths
- Walk-in showers
- Jacuzzi in master-bedroom
- Bulgari Hotels & Resorts amenities
- 55" TV
- Over 800 channels
- Cinema room with 67" TV screen
- Business center
- Gym
- Spa treatment room
- Hammam
- Gourmet treats
- Oversized infinity oval pool
- Outdoor pool deck
- Outdoor relaxation area
- Reserved Momo Design bikes
- Direct beach access
- Private beach cabana
- Laundry and valet services
- Private parking
- Private entrance and security
- Digital room control
- iPod docking station
- Domestic room and pantry
- Berluti shoeshine service
- Technogym weights
- High speed Wi-Fi
- Fully equipped bar
- Safety box and jewelry tray
- Chef available upon request
- Beach bag



RESTAURANTS & LOUNGES

IL RISTORANTE - NIKO ROMITO



The concept, created by the Michelin-starred chef, Niko Romito, celebrates the rich heritage of Italy. Open for lunch and dinner, the restaurant offers a menu that optimally expresses the culture, elegance and vitality of everything that is quintessentially Italian.

Opening hours
Dinner: 07.00 pm, last seat at 10.30 pm

HŌSEKI



With only nine seats overlooking the Dubai's skyline, the Chef Masahiro Sugiyama offers a memorable Omakase experience with the finest ingredients directly imported from Japan.

Opening hours
Lunch seating at: 01.00 pm
(From Thursday to Sunday)
Dinner seating at: 06.00 pm or 08.30 pm
(From Wednesday to Sunday)

LA SPIAGGIA



The resort beach venue provides a variety of international food and drinks during the day; while by night the beach club glistens under the lanterns and offers the perfect spot to enjoy the sea breeze within an oasis hideaway

Open from 08.00 am, last seat at 10.00 pm

IL CAFFÈ



Open from morning to late night and featuring a large deck terrace overlooking the Bulgari Marina, the all-day dining venue provides Mediterranean and local delicacies including an all-day breakfast option for in-house guests.

Open from 06.30 am, last seat at 11.00 pm

RESTAURANTS & LOUNGES

THE BULGARI BAR



Sharing space with Il Ristorante - Niko Romito while featuring sumptuous views of the Arabian Gulf, the bar is the perfect location to admire sunset and enjoy complimentary Italian Aperitivo prior dinner.

Opening hours

Every day from 05.00 pm to 02.00 am
Aperitivo: from 06.00 pm to 09.00 pm

THE BULGARI LOUNGE



An elegant classically-designed destination featuring artisanal pastries, homemade Bvlgari chocolates and an Italian-themed afternoon tea.

Opening Hours

Afternoon Tea - Niko Romito: 03.00 pm - 06.00 pm
Minimum spend: AED 200

THE BULGARI YACHT CLUB DUBAI



Nestled at the end of the Bulgari Marina and featuring an Italian seafood menu, the waterside venue is open for lunch and dinner for a timeless maritime dining experience.

Opening Hours

Restaurant
Open from 12.30 pm, last seat at 11.00 pm

Pool
Open from 09.00 am to sunset

Bar
Open from 12.30 pm to 12.00 am

Lounge
Open from 05.00 pm, last seat at 11.30 pm

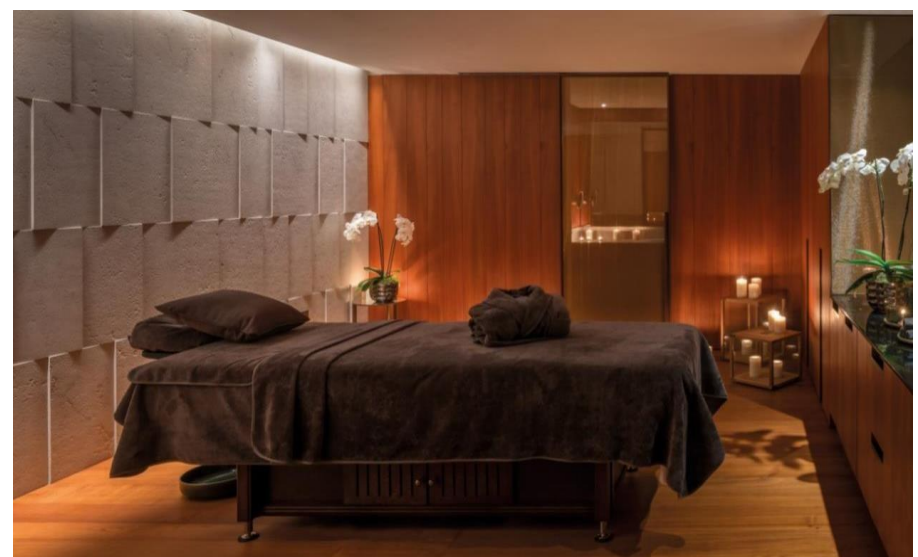


WELLNESS

Designed by Antonio Citterio Patricia Viel, the spa oasis features a variety of relaxing amenities including indoor pool, hammam, 24-hour fitness center with the Workshop fitness studio, 8 treatment rooms, an authentic Italian barbershop and a beauty salon.

THE BULGARI SPA

- 1700 sqm
- 7 treatment rooms and suites
- 1 couple suite
- Hammam
- 25 meters indoor pool
- Outdoor deck
- Vitality Pool
- Relaxation area
- Indoor cabanas by the pool
- F&B services available
- Highest quality products including Augustinus Bader, MAULI and AMALA



THE WORKSHOP GYMNASIUM

- State-of-the-art gymnasium
- Technogym equipment
- Views out to the sea
- 2 private fitness studios
- Personal training and assessment
- Nutrition analysis
- Metabolic testing
- Personal lessons of Yoga, Pilates and 1-to-1 training

