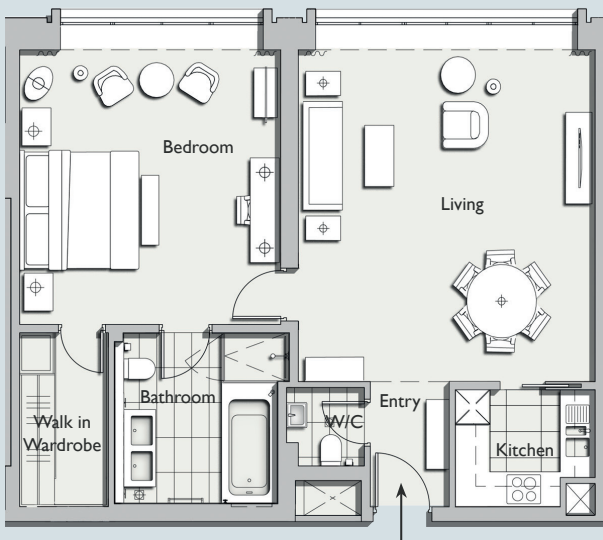


# ONE DENMAN PLACE



## APARTMENT 19

A 78m<sup>2</sup> (839 sq ft) 1 bedroom apartment, which is light and airy with floor to ceiling windows. The apartment has beautiful oak floors in the living spaces, a powder room and a sleek Boffi kitchen. The king size double bedroom has an ensuite bathroom beautifully designed in marble and oak.



FLOORPLAN



APARTMENT LOCATION



DIRECTION

APARTMENT SPECIFICATION	
GROSS INTERNAL AREA:	78m <sup>2</sup> (839 sq ft)
LOCATION:	Fourth Floor
ASPECT:	Ham Yard
ROOM DIMENSIONS	
BEDROOM:	4.5 X 4.8m (14.7 X 15.8 ft)
BATHROOM:	3.0 X 2.5m (9.7 X 8.1 ft)
WALK-IN-WARDROBE:	3.0 X 1.7m (9.7 X 5.5 ft)
W/C:	1.7 X 1.3m (5.5 X 4.3 ft)
KITCHEN:	2.4 X 2.0m (7.9 X 6.6 ft)
LIVING ROOM:	5.5 X 5.1m (17.9 X 16.7 ft)
ENTRY:	2.3 X 1.4m (7.5 X 4.5 ft)

SPECIFICATION



ELEVATION

For further information please contact:  
 T: +44 (0)20 3411 9200 E: info@onedenmanplace.com  
 One Denman Place London W1D 7AH