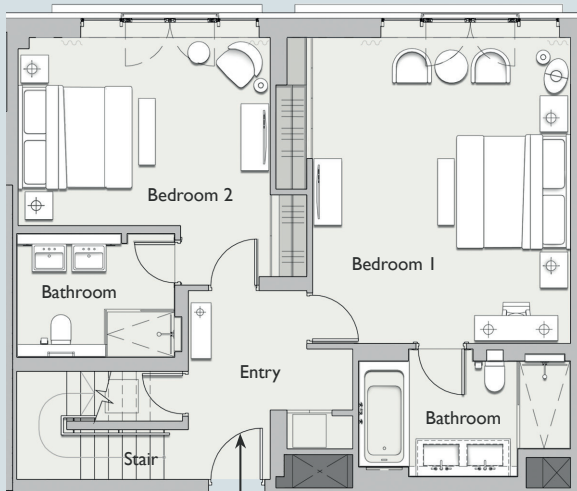


ONE DENMAN PLACE



APARTMENT 23

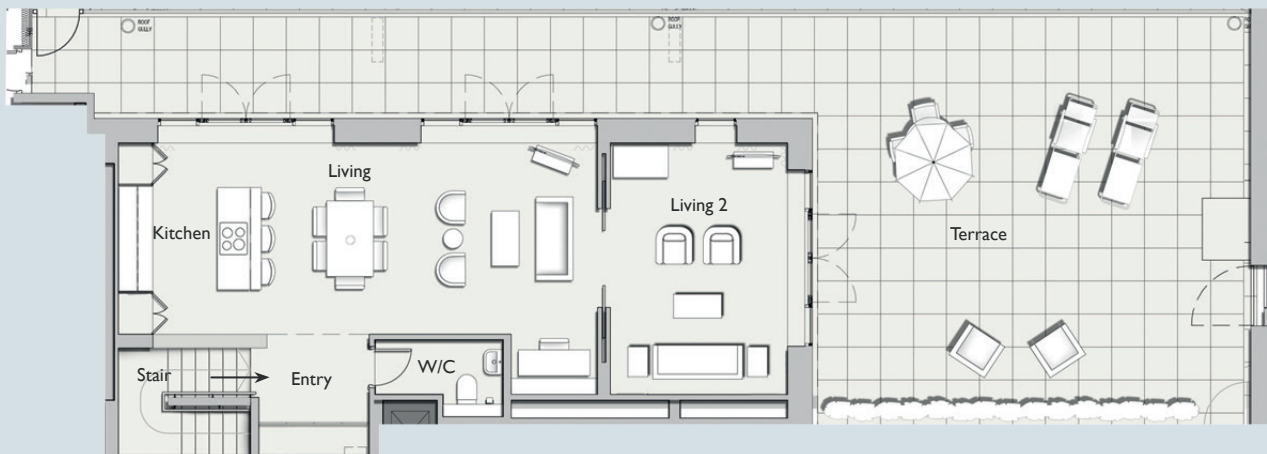
A 145m² (1,560 sq ft) 2 bedroom duplex apartment, which is light and airy with floor to ceiling windows and large terrace. The apartment has beautiful oak floors in the living spaces, a powder room and a sleek Boffi kitchen. The king size double bedrooms have ensuite bathrooms beautifully designed in marble and oak.



FLOORPLAN LOWER

APARTMENT SPECIFICATION	
GROSS INTERNAL AREA:	145m ² (1,560 sq ft)
UPPER LEVEL:	67m ² (720 sq ft)
UPPER TERRACE AREA:	90m ² (968 sq ft)
LOWER LEVEL:	78m ² (840 sq ft)
LOCATION:	Fifth and Sixth Floor
ASPECT:	Ham Yard

SPECIFICATION



FLOORPLAN UPPER

ONE DENMAN PLACE

ROOM DIMENSIONS	
BEDROOM 1:	5.5 X 4.6m (18.0 X 15.2 ft)
BATHROOM 1:	3.8 X 2.3m (12.4 X 7.5 ft)
LOWER ENTRY:	3.0 X 3.4m (9.7 X 11.2 ft)
BEDROOM 2:	4.5 X 4.5m (14.9 X 14.6 ft)
BATHROOM 2:	2.8 X 2.2m (9.3 X 7.2 ft)
W/C:	2.3 X 1.4m (7.6 X 4.5 ft)
KITCHEN:	3.8 X 3.1m (12.4 X 10.2 ft)
LIVING ROOM:	5.6 X 4.9m (18.4 X 16.0 ft)
LIVING ROOM 2	4.9 X 3.5m (16.0 X 11.6 ft)
UPPER ENTRY:	2.2 X 2.0m (7.2 X 6.6 ft)
TERRACE:	22.2 X 7.5m (72.7 X 24.6 ft)

SPECIFICATION



APARTMENT LOCATION



APARTMENT LOCATION



DIRECTION



ELEVATION