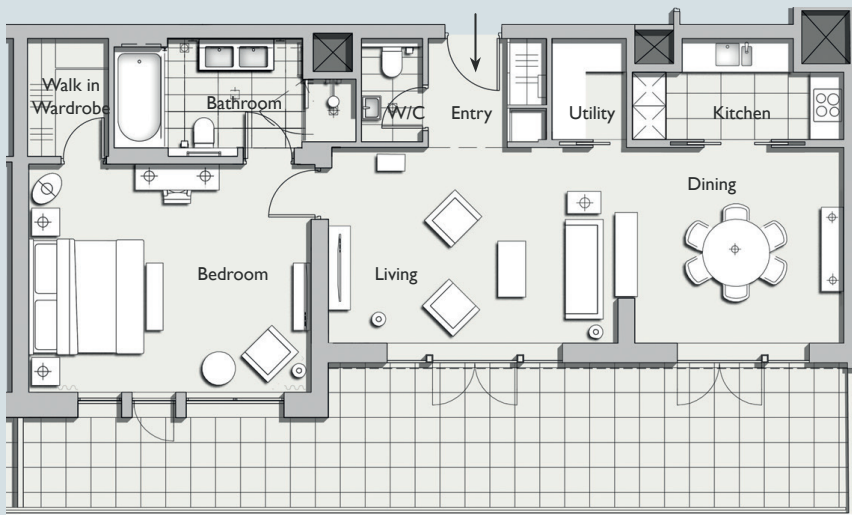


# ONE DENMAN PLACE



## APARTMENT 17

An 83m<sup>2</sup> (893 sq ft) 1 bedroom apartment, which is light and airy with floor to ceiling windows and large terrace. The apartment has beautiful oak floors in the living spaces, a powder room and a sleek Boffi kitchen. The king size double bedroom has an ensuite bathroom beautifully designed in marble and oak.



FLOORPLAN



APARTMENT LOCATION



DIRECTION

APARTMENT SPECIFICATION	
GROSS INTERNAL AREA:	83m <sup>2</sup> (893 sq ft)
LOCATION:	Fourth Floor
ASPECT:	Denman Street
ROOM DIMENSIONS	
BEDROOM:	5.1 X 4.0m (16.7 X 13.2 ft)
BATHROOM:	4.3 X 2.1m (14.0 X 6.9 ft)
WALK-IN-WARDROBE:	2.2 X 1.4m (7.3 X 4.7 ft)
W/C:	1.8 X 1.1m (6.0 X 3.6 ft)
KITCHEN:	3.8 X 1.8m (12.4 X 5.9 ft)
UTILITY:	1.8 X 1.3m (5.9 X 4.3 ft)
LIVING ROOM:	5.1 X 3.4m (16.7 X 11.2 ft)
DINING:	3.7 X 3.4m (12.2 X 11.2 ft)
ENTRY:	2.1 X 2.0m (6.8 X 6.7 ft)

SPECIFICATION



ELEVATION

For further information please contact:  
 T: +44 (0)20 3411 9200 E: info@onedenmanplace.com  
 One Denman Place London W1D 7AH