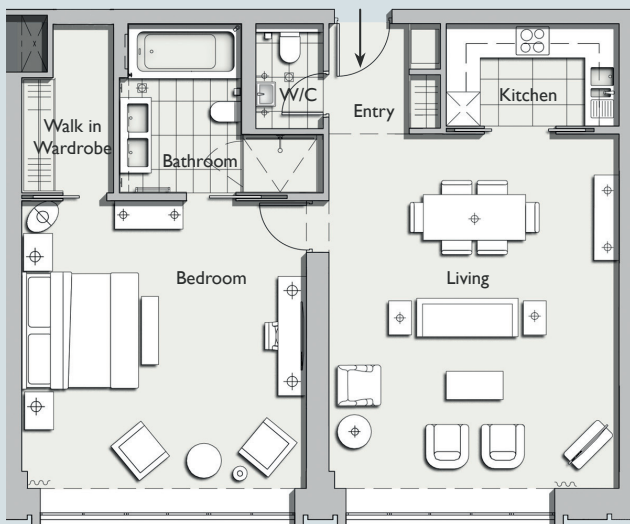


ONE DENMAN PLACE



APARTMENT 12

An 87m² (936 sq ft) 1 bedroom apartment, which is light and airy with floor to ceiling windows. The apartment has beautiful oak floors in the living spaces, a powder room and a sleek Boffi kitchen. The king size double bedroom has an ensuite bathroom beautifully designed in marble and oak.



FLOORPLAN



APARTMENT LOCATION



DIRECTION

APARTMENT SPECIFICATION	
GROSS INTERNAL AREA:	87m ² (936 sq ft)
LOCATION:	Third Floor
ASPECT:	Denman Street
ROOM DIMENSIONS	
BEDROOM:	5.1 X 5.0m (16.7 X 16.5 ft)
BATHROOM:	3.6 X 2.9m (11.7 X 9.5 ft)
WALK-IN-WARDROBE:	3.0 X 1.6m (9.8 X 5.2 ft)
W/C:	1.7 X 1.1m (5.7 X 3.6 ft)
KITCHEN:	2.9 X 1.8m (9.5 X 5.9 ft)
LIVING ROOM:	6.2 X 5.1m (20.2 X 16.7 ft)
ENTRY:	2.1 X 2.1m (6.9 X 6.8 ft)

SPECIFICATION



ELEVATION

For further information please contact:
 T: +44 (0)20 3411 9200 E: info@onedenmanplace.com
 One Denman Place London W1D 7AH