

*The Beaumont*







## THE BEAUMONT

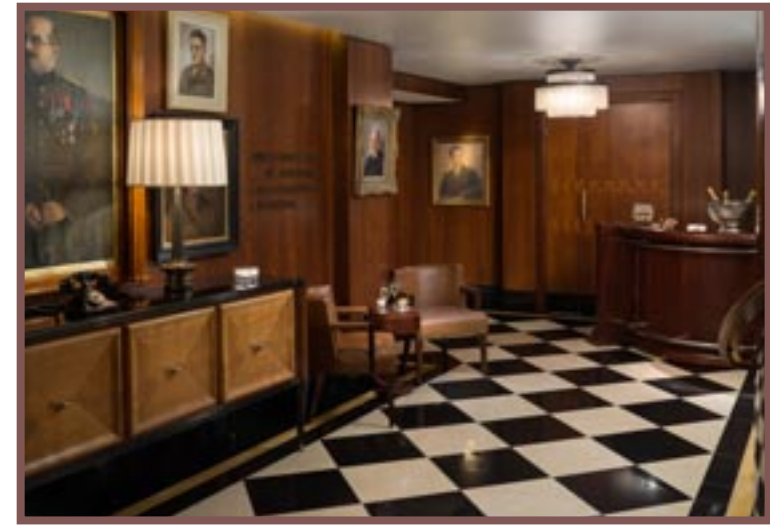
*The award-winning Beaumont is one of London's smartest five-star luxury hotels, superbly located on a quiet garden square close to the finest shops, galleries and museums of Mayfair, Marylebone, St James's and the West End.*

*Grand in style yet intimate and welcoming, its design is inspired by the great Art Deco hotels of the 1920s, with beautifully appointed rooms and public areas, including the glamorous Colony Grill Room restaurant, the stylish Magritte Bar, an exclusive residents' lounge and an elegant spa and gymnasium.*











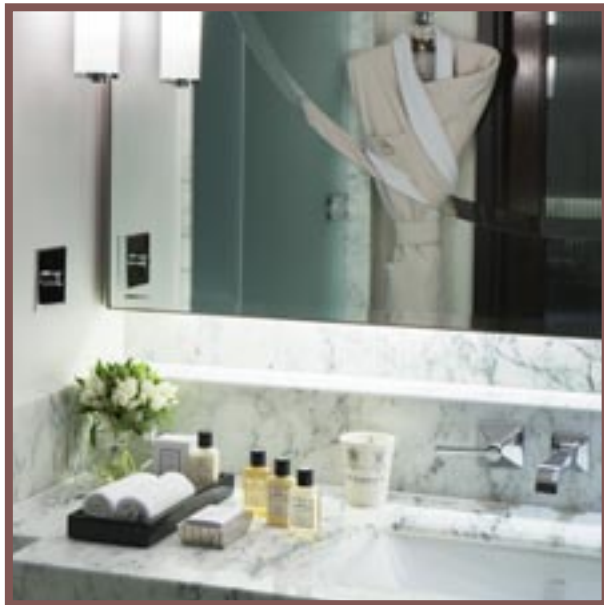




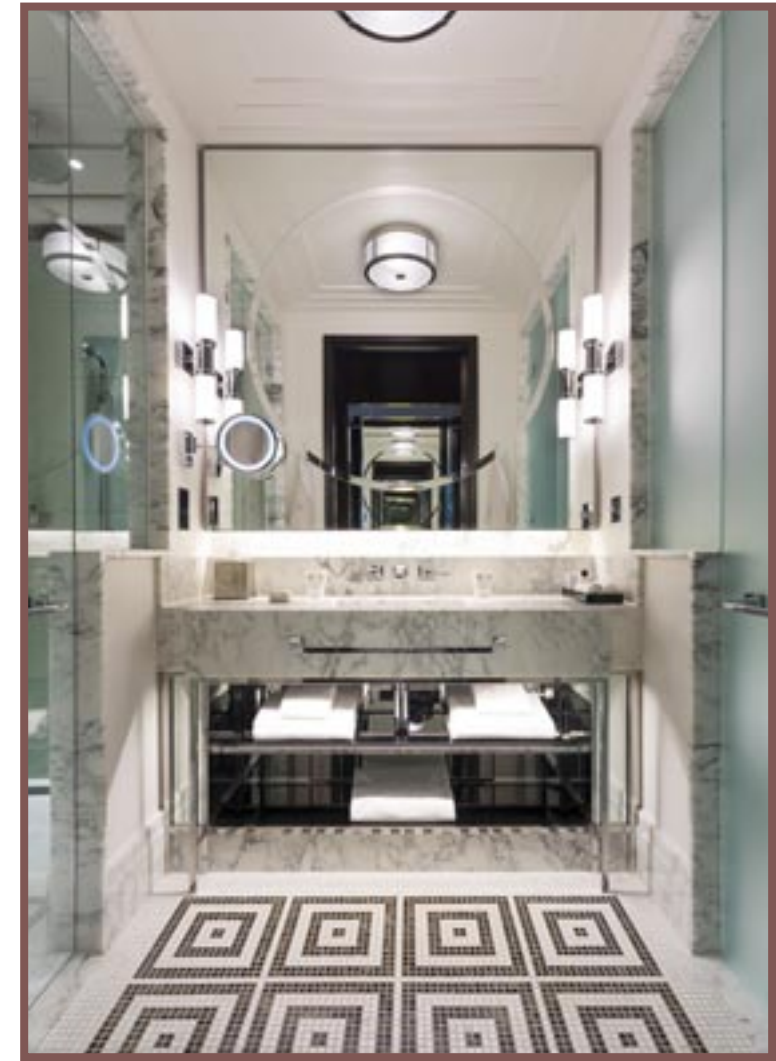


## THE BEDROOMS

All the rooms at The Beaumont have been designed with the guest's comfort foremost in mind. They feature large hallways, sliding internal doors for additional privacy, ample wardrobes and sleek Art Deco bathrooms. All have king-size beds, which can be reconfigured as twins.









## THE SUITES

The Beaumont has 13 studios and 9 one-bedroom suites, including Turner Prize-winner Antony Gormley's extraordinary inhabitable sculpture, ROOM, plus The Roosevelt, the opulent and hugely versatile presidential suite, which can be opened up to occupy the entire fifth floor.

All suites feature vintage art and photography, large bathrooms, personally selected books and plentiful wardrobe space; some can be connected for groups of families and friends.



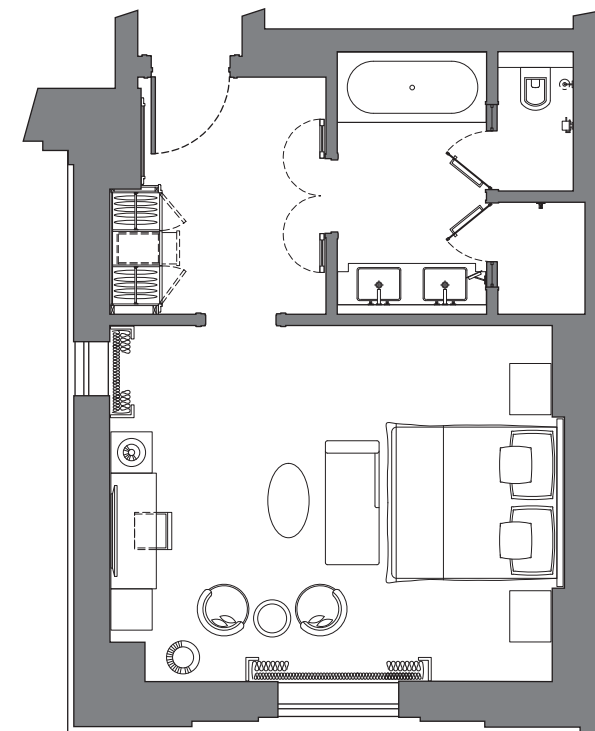




## STUDIOS

Generously proportioned, the Studios feature comfortable seating and dressing areas, large bathrooms and private hallways. Original works of art abound, with a wide selection of classic movies to watch and books to read.

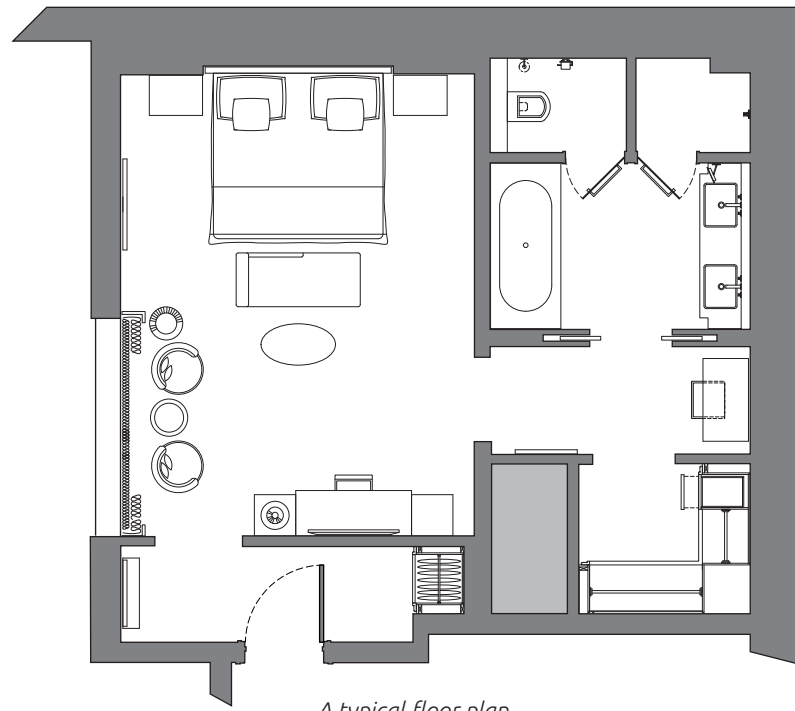
The Superior Studios each have their own unique features: some have separate dressing areas, some a private terrace, and all have views over the garden square or the rooftops of Mayfair.



Studios  
Total 6  
38 - 43m<sup>2</sup> (410 - 440sq ft)

*A typical floor plan*

## SUPERIOR STUDIOS

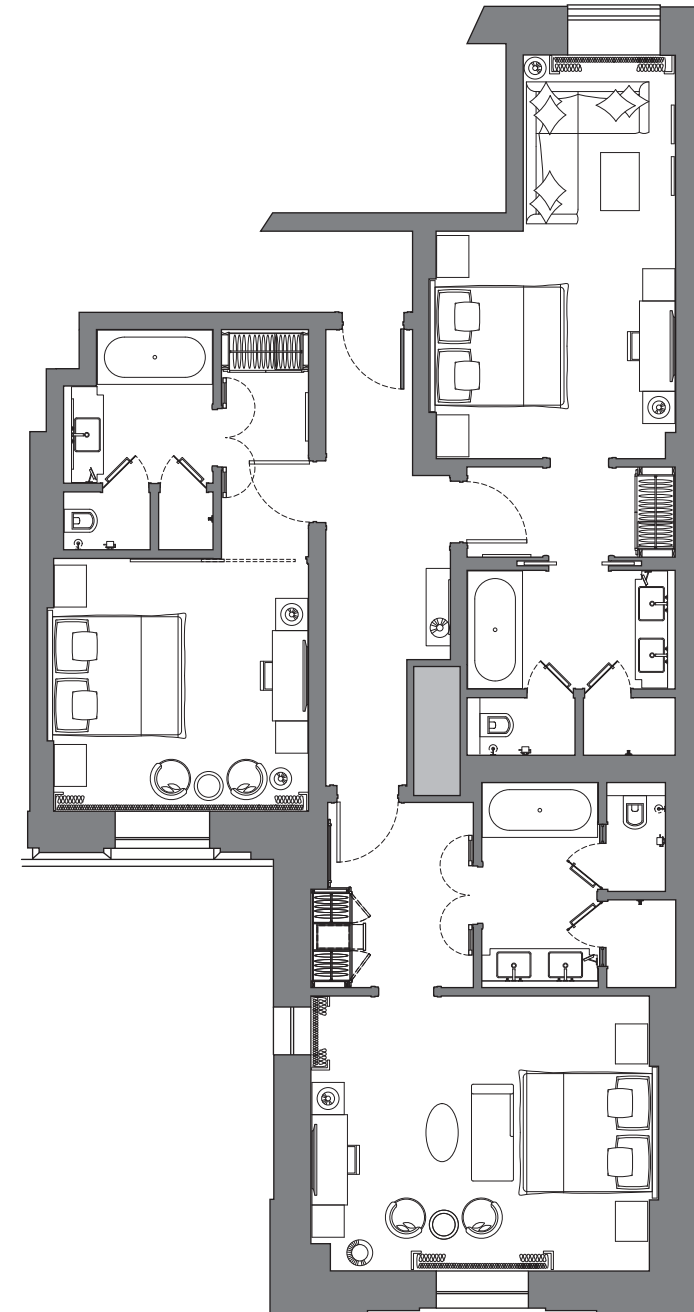
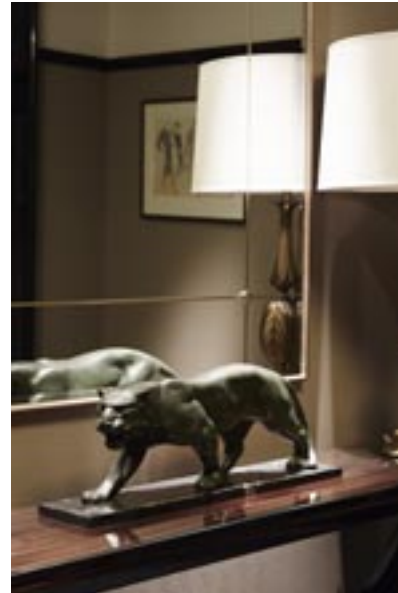


Superior Studios  
Total 7  
44 - 53m<sup>2</sup> (475 - 570 sq ft)

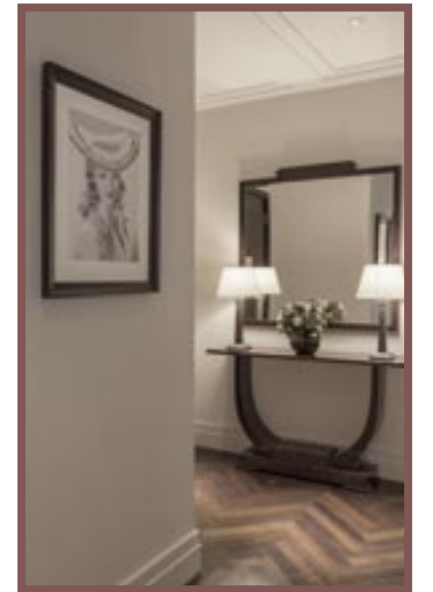




## A STUDIO WING



**A Studio Wing**  
Up to 2 Studios and a Superior  
Bedroom can be combined into a  
totally private space  
110m<sup>2</sup> (1,185 sq ft)





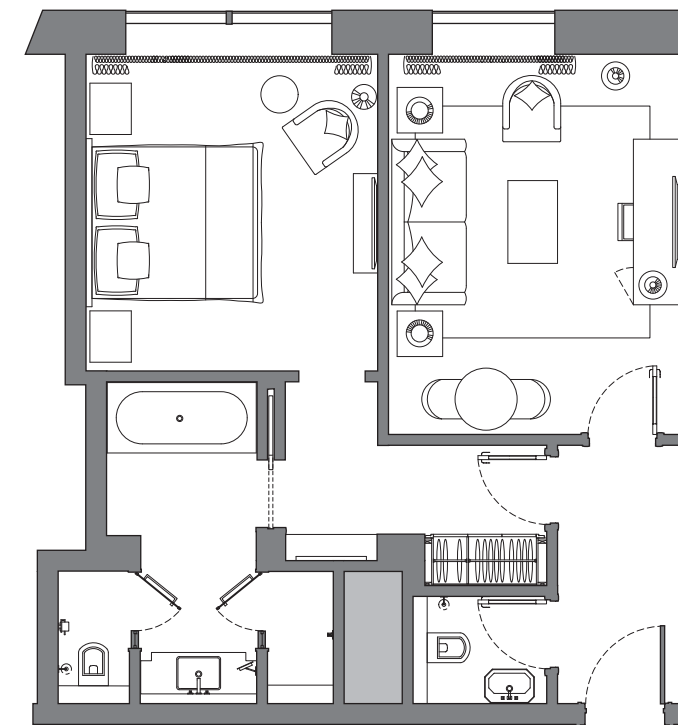






## CLASSIC SUITES

The Beaumont's Classic Suites, with their soft Art Deco colour palette and luxurious finishes, offer a peaceful, quiet retreat, with ample space for entertaining, meetings, or simply relaxing. With luxurious sofa beds, they're also perfect for families travelling with children.



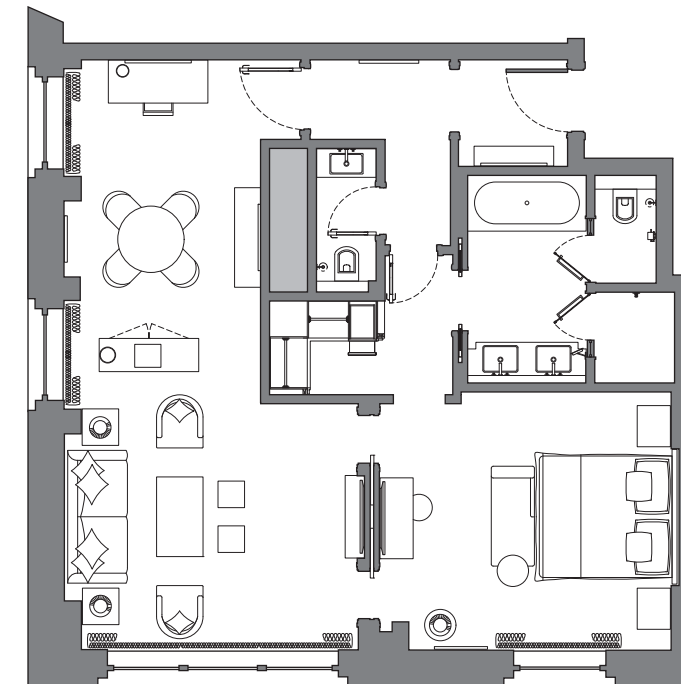
Classic Suites  
Total 4  
60m<sup>2</sup> (660 sq ft)



## MAYFAIR SUITES

Each of The Beaumont's largest one-bedroom suites has its own unique layout, but all look over Brown Hart Gardens.

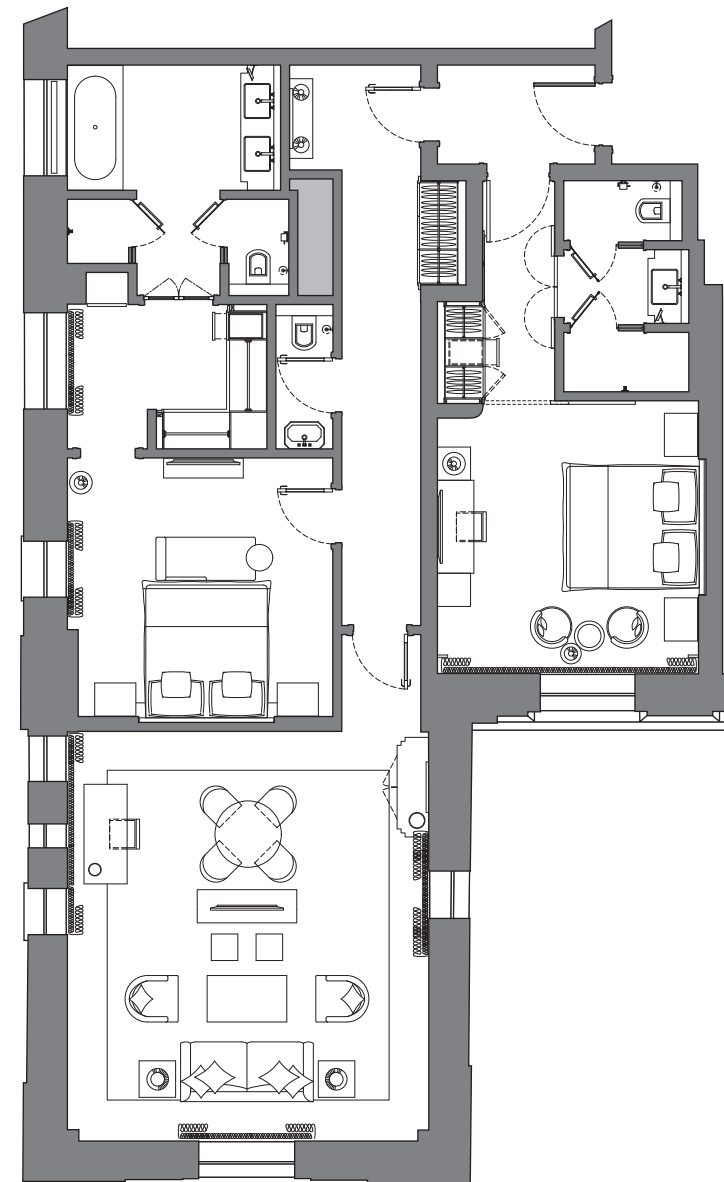
Silks, mohair velvets, bronze detailing and subtle period patterns create a calm, relaxing environment for business or pleasure.



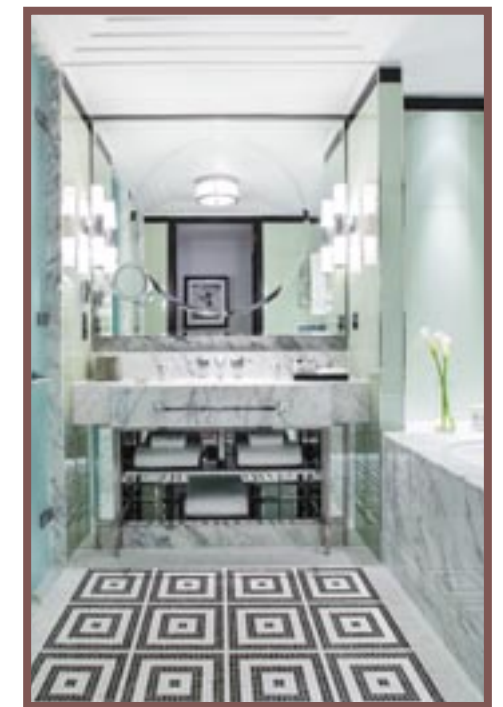
Mayfair Suites  
Total 3  
81 - 90m<sup>2</sup> (870 - 969sq ft)

*A typical floor plan*





A Mayfair Suite  
2 Bedrooms  
122m<sup>2</sup> (1,315 sq ft)

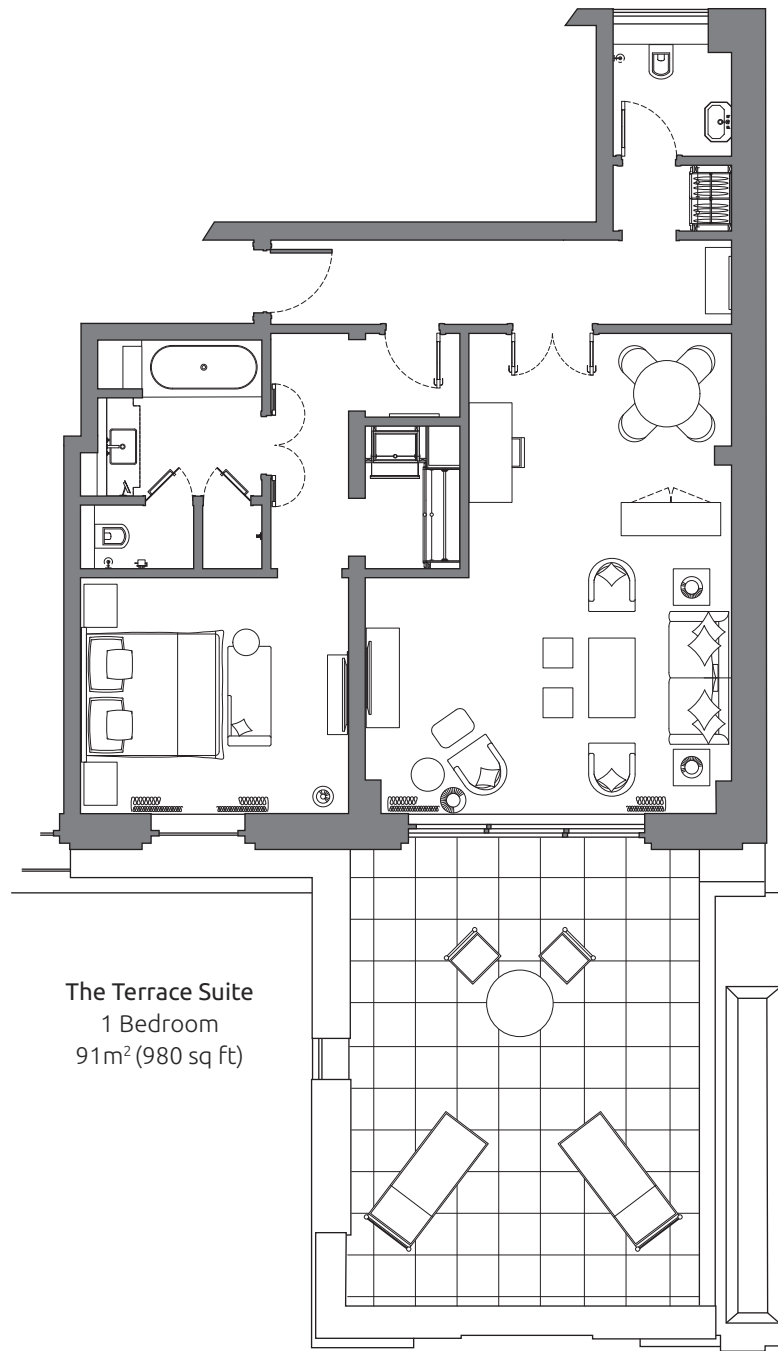


## THE TERRACE SUITE

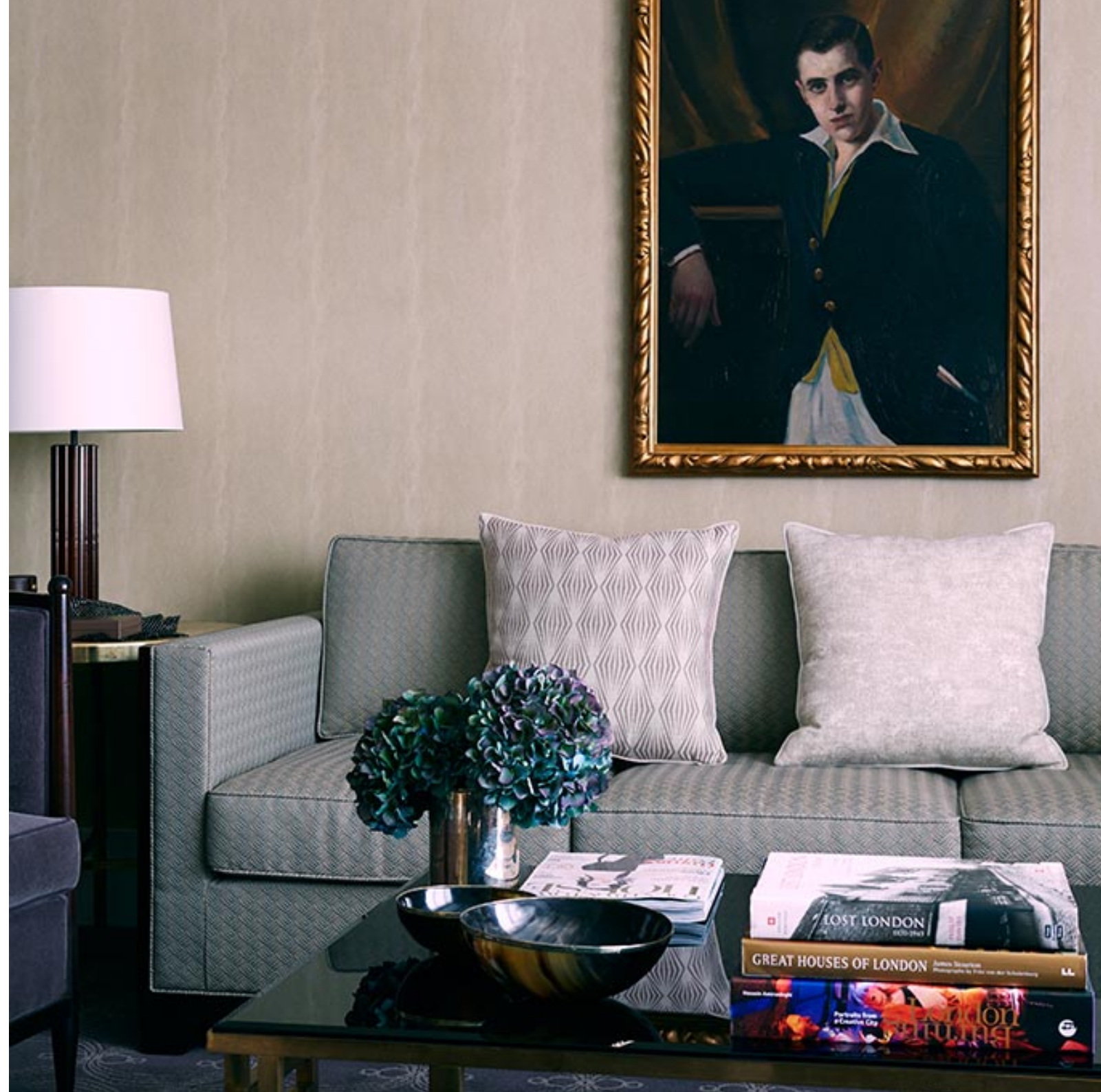
A large one-bedroom suite, ideal for entertaining, with a generous, very private terrace overlooking Brown Hart Gardens and sweeping views towards the City of London. The comfortable sitting room provides ample space for relaxing, dining and working, or even playing a round of chess on the brass-detailed, antique lacquered games table.







The Terrace Suite  
1 Bedroom  
91m<sup>2</sup> (980 sq ft)





## THE ROOSEVELT

The Beaumont's presidential suite, which can be opened up to incorporate five bedrooms, evokes the glamorous era of the great Transatlantic liners. With an expansive sitting room and a separate dining room seating eight, plus a pantry kitchen and guest bathroom, it features cream lacquer panelling, parquet flooring, a working fireplace and a large terrace overlooking Brown Hart Gardens.

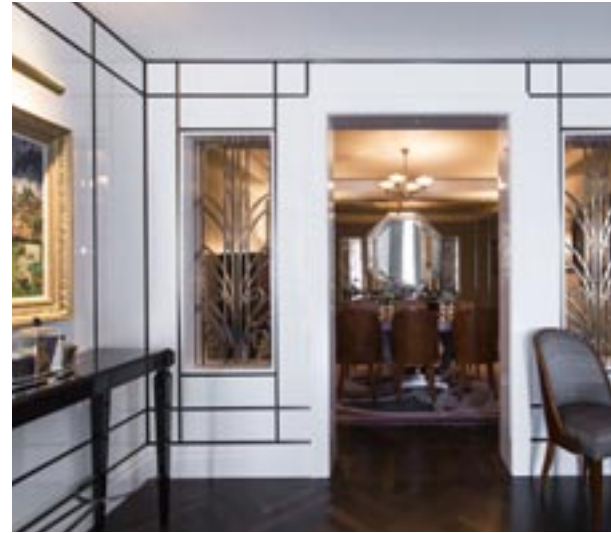
Hugely versatile and supremely comfortable, the suite can also be arranged to incorporate the entire presidential floor of the hotel, in total privacy and security.



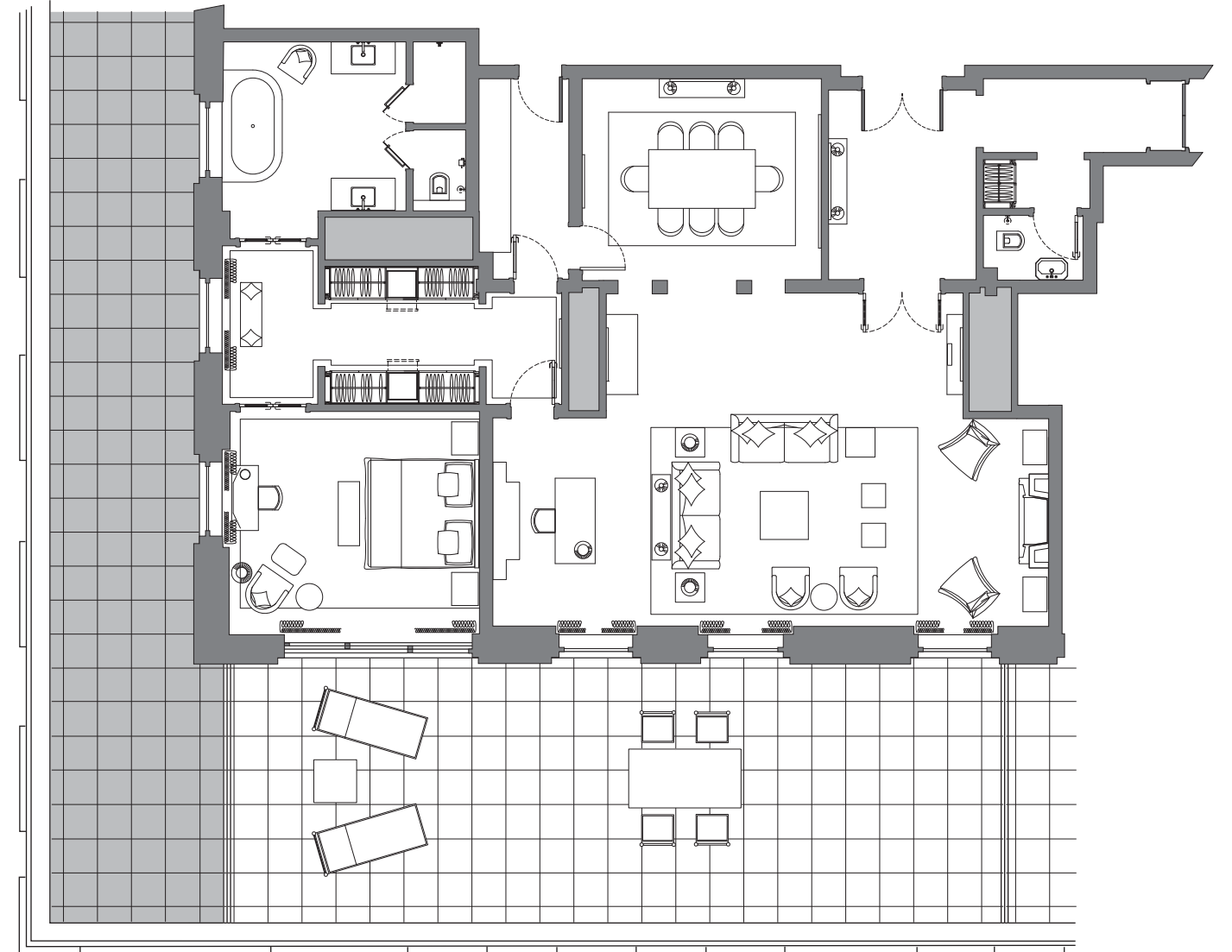






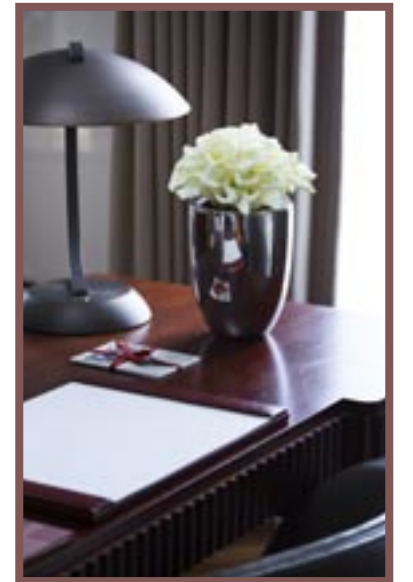
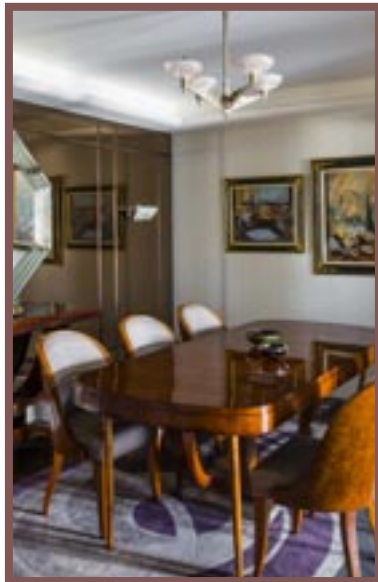
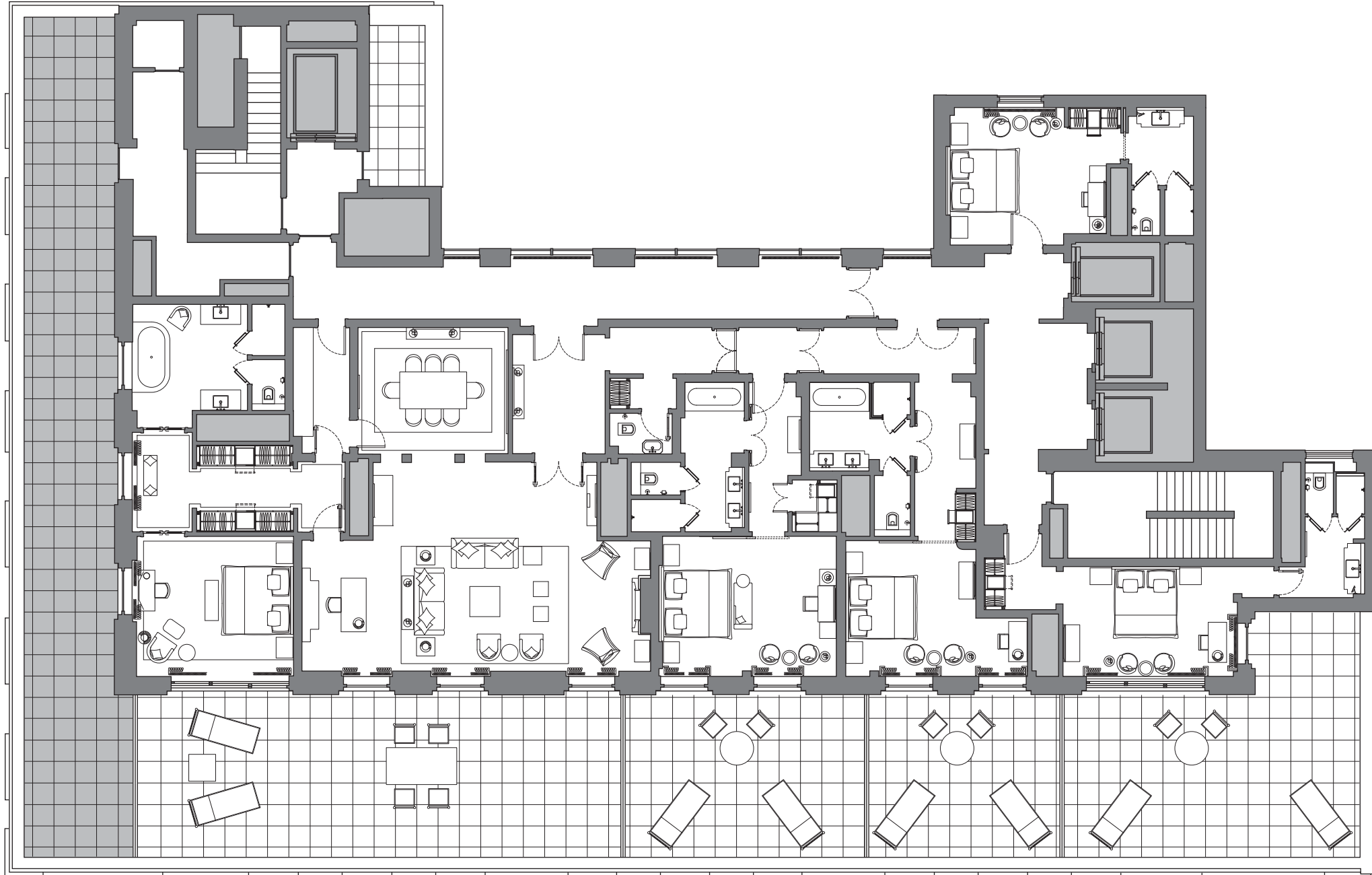


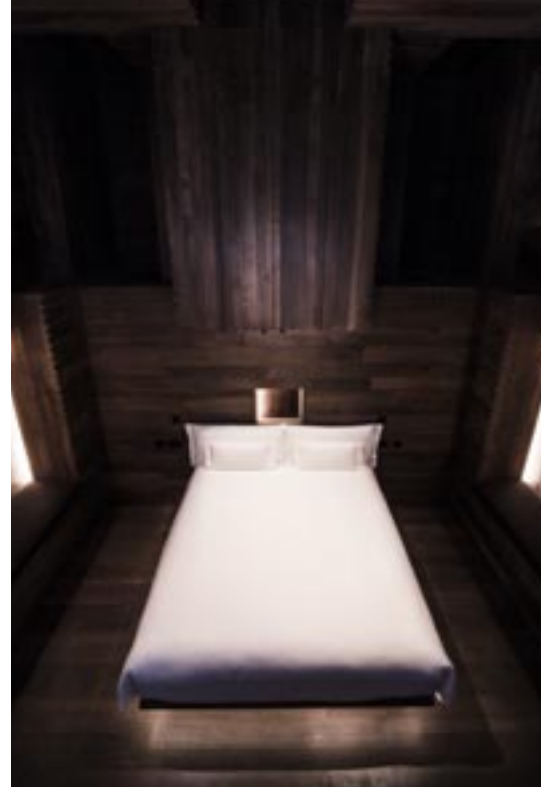
The Roosevelt  
1 Bedroom  
169m<sup>2</sup> (1,820 sq ft)





The Roosevelt  
5 Bedrooms  
606m<sup>2</sup> (6,525 sq ft)





## ROOM

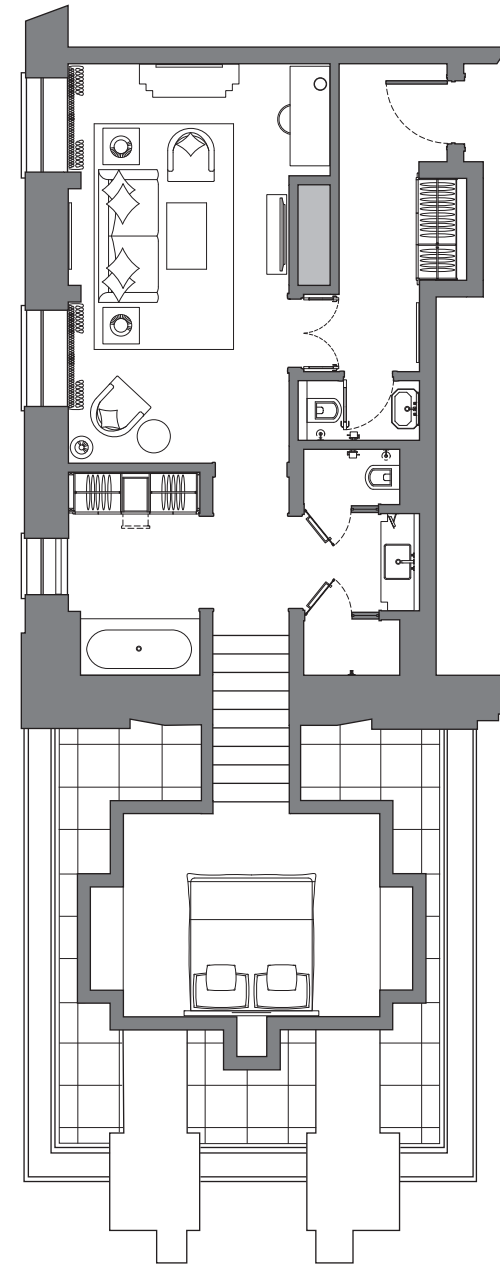
Antony Gormley's ROOM forms the bedroom of a single suite. An alluring, mysterious space, its creation allowed the artist to 'sculpt darkness', encouraging its guests to enjoy a meditative moment of withdrawal from the busy world outside.

Gormley's ROOM is both a monumental cuboid sculpture based on the artist's body and an architectural extension to the hotel. The interior, entirely clad in dark fumed oak, is approached by nine white marble steps through a black velvet curtain from a strongly contrasting white marble bathroom.

Adjacent to ROOM is a sitting room with large hallway and bathroom, decorated, like all the rooms in The Beaumont, in a discreet Art Deco style.

### ROOM

by Antony Gormley  
A one bedroom suite  
69m<sup>2</sup> (742 sq ft)





## BEDROOMS AND SUITES

50 Classic , Superior and Premier rooms

13 Studios

4 Classic Suites

3 Mayfair Suites

The Terrace Suite

ROOM by Antony Gormley – a one bedroom suite

The Roosevelt Suite – can be configured as a one, two or three bedrooms suite, or up to 5 bedrooms encompassing the entire Presidential Floor

*All guests enjoy complimentary*

- high speed wi-fi;
- daily 'Beaumont Breakfast Bite' ~ morning coffee, tea, juices, home-made viennoiseries and preserves;
- fresh organic coffee, teas, soft drinks & snacks from the in-room bar;
- in-room current & vintage movies;
- local & national landline telephone calls

*All rooms and suites have dual-line telephones, voice messaging, personally controlled air-conditioning; windows that can be opened, & laptop safes*

*All rooms are non-smoking.*

*A number of rooms and suites are interconnecting. Some are designed as disability accessible rooms.*



## DINING

### THE CUB ROOM

Residents' Bar and Lounge, for hotel guests only  
Open every day, from early until late

### THE COLONY GRILL ROOM

Open every day, from early until late

### THE MAGRITTE BAR

Open every day, from lunch until the early hours

## PRIVATE DINING AND MEETINGS

### THE LOTOS ROOM

18 covers for a board meeting  
45 covers for a private breakfast/lunch/dinner  
45 covers theatre style  
60 covers for a drinks reception

### THE CUB ROOM

12 covers for lunch

## SPA AND HAMAM

A spa with steam room, sauna, traditional hamam table, treatment rooms, a large relaxation area and a grooming salon

## THE GYMNASIUM

Complimentary use for guests, 24 hours a day

## SERVICES

Chauffeur-driven courtesy Daimler  
Valet parking  
Full concierge services  
24 hour in-room dining

## LOCATION AND TRANSPORT

Located in the very centre of Mayfair, within a few minutes' walk of Selfridges on Oxford Street, Bond Street, Mount Street, Grosvenor Square, Berkeley Square and Hyde Park.

The theatres of London's West End are 5-10 minutes by car. The City of London is 20 minutes by car.

## AIR

Heathrow Airport.....35-55 minutes by car/17 miles

Gatwick Airport .....55-90 minutes by car/28 miles

City Airport.....30-45 minutes by car/10 miles

## TRAIN

St Pancras Eurostar terminal .....10-15 minutes by car

Paddington Station  
(Heathrow Express).....6-10 minutes by car

Victoria Station  
(Gatwick Express)..... 6-10 minutes by car

## LOCAL TRANSPORT

Bond Street

Underground Station.....5 minutes walk

## CAR

The Beaumont offers valet parking



## RESERVATIONS

[www.thebeaumont.com](http://www.thebeaumont.com)

[reservations@thebeaumont.com](mailto:reservations@thebeaumont.com)

Telephone number: +44 20 7499 1001

## THE BEAUMONT

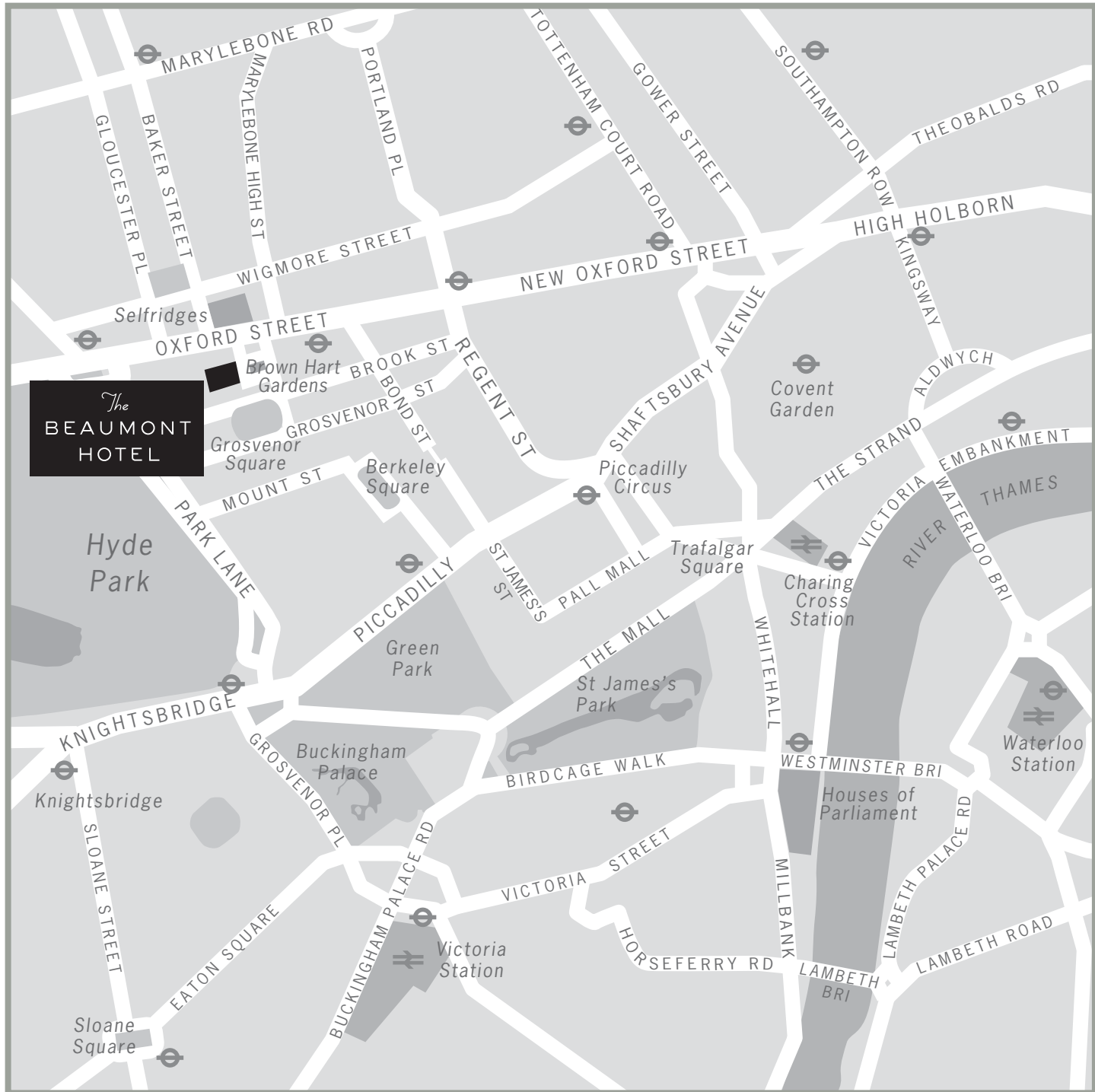
BROWN HART GARDENS

MAYFAIR

LONDON W1K 6TF

[Info@thebeaumont.com](mailto:Info@thebeaumont.com)

[www.thebeaumont.com](http://www.thebeaumont.com)







THE BEAUMONT

BROWN HART GARDENS, MAYFAIR, LONDON W1K 6TF

*[www.thebeaumont.com](http://www.thebeaumont.com)*