



The ROYAL Suite

The Lanesborough Hotel's seven-bedroom Royal Suite is a residence fit for a king, queen or head of state. Extending across 450 sq m/ 4,845 sq ft, offering stately views of Buckingham Palace Gardens, its seven bedrooms and bathrooms, two living rooms and large dining room (with space to entertain up to 12 guests) exude exquisite taste, fine British craftsmanship and exacting attention to period detail. Impeccable service is provided by dedicated butler, who is at guests' disposal around the clock. The Royal Suite can be booked in part or in its entirety. For guests booking all seven bedrooms, the hotel's chauffeur-driven Rolls-Royce Phantom is available as a complimentary service.





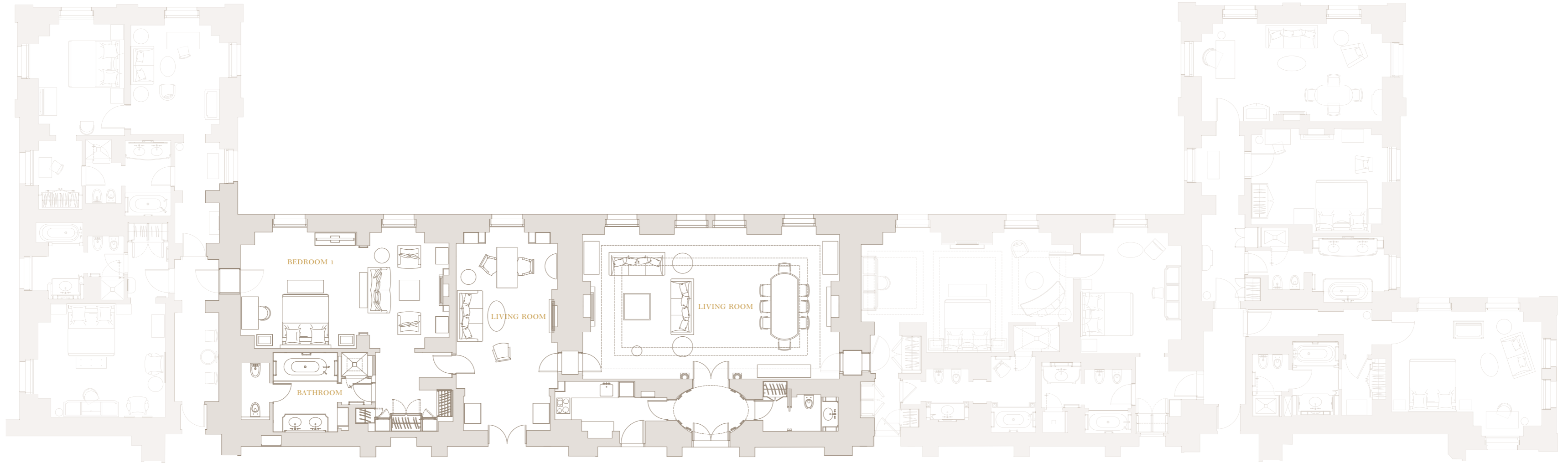












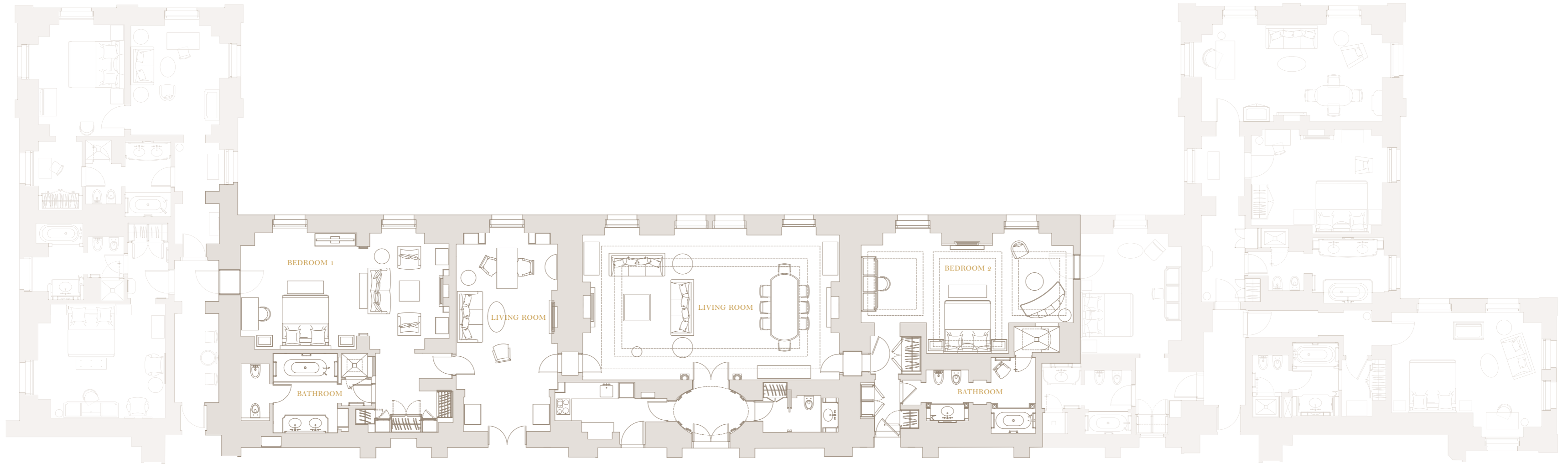
Example only, exact floor plans may vary

The ROYAL Suite

1 BEDROOM CONFIGURATION

FEATURES

<i>Size</i>	Up to 165 sq m (1,776 sq ft)
<i>Occupancy</i>	Up to 2 adults and 1 child, or 3 adults
<i>Bed</i>	Super King sized bed available
<i>Bathroom</i>	Walk-in shower and bathtub, steam shower
<i>Connecting Room</i>	Can be booked as a one, two, three, or five bedroom suite
<i>Views</i>	Wellington Arch



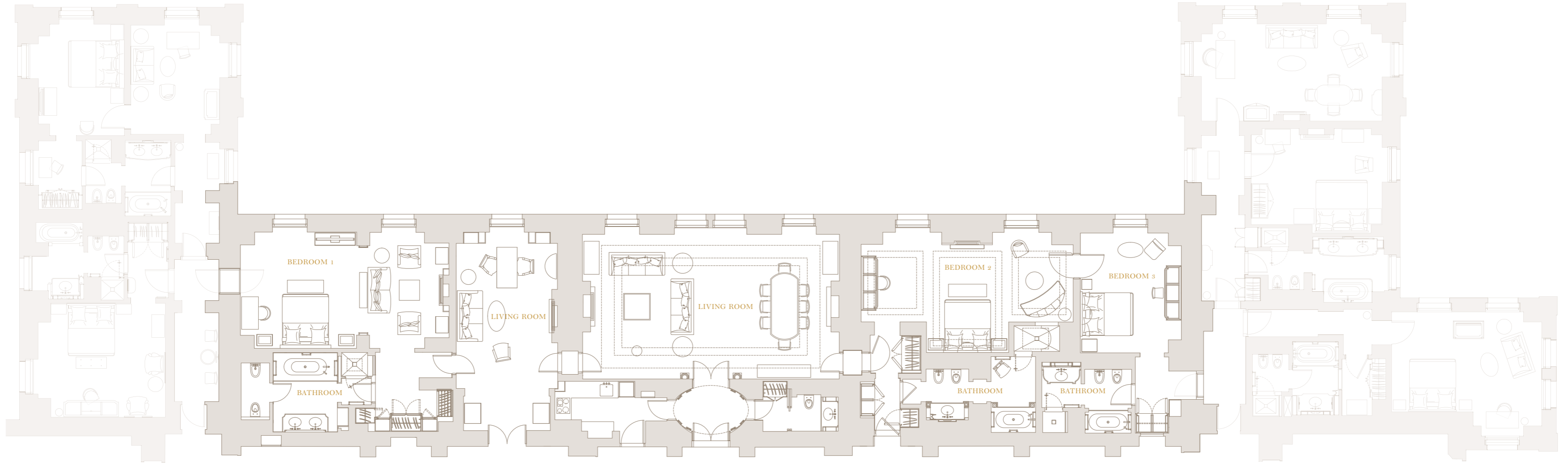
Example only, exact floor plans may vary

The ROYAL Suite

2 BEDROOM CONFIGURATION

FEATURES

<i>Size</i>	Up to 217 sq m (2,336 sq ft)
<i>Occupancy</i>	Up to 6 guests
<i>Bed</i>	Super King in 1st bedroom, King / Twin in 2nd bedroom
<i>Bathroom</i>	Walk-in shower and bathtub, steam shower
<i>Connecting Room</i>	Can be booked as a one, two, three, five or seven bedroom suite
<i>Views</i>	Wellington Arch



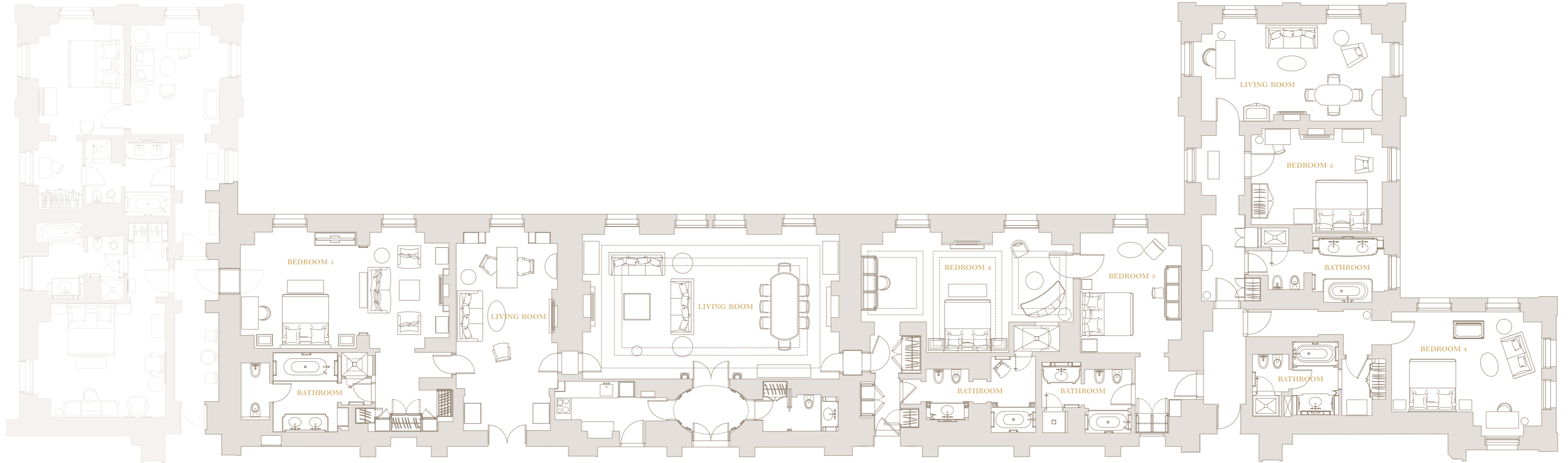
Example only, exact floor plans may vary

The ROYAL Suite

3 BEDROOM CONFIGURATION

FEATURES

<i>Size</i>	Up to 248 sq m (2,670 sq ft)
<i>Occupancy</i>	Up to 8 guests
<i>Bed</i>	Super King in 1st bedroom, King / Twin in 2nd bedroom, Queen in 3rd bedroom
<i>Bathroom</i>	Walk-in shower and bathtub, steam shower
<i>Connecting Room</i>	Can be booked as a one, two, three, five or seven bedroom suite
<i>Views</i>	Wellington Arch



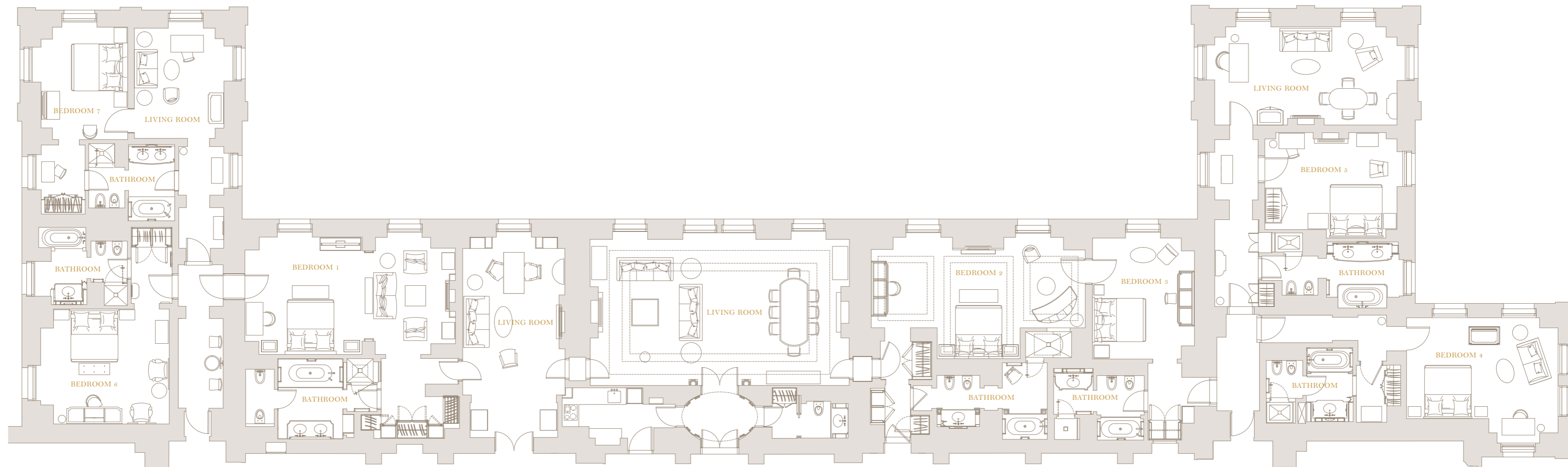
Example only, exact floor plans may vary

The ROYAL Suite

5 BEDROOM CONFIGURATION

FEATURES

<i>Size</i>	Up to 363 sq m (3,908 sq ft)
<i>Occupancy</i>	Up to 14 guests
<i>Bed</i>	Super King in 1st bedroom, King / Twin in 2nd bedroom, Queen in 3rd bedroom, Super King in 4th bedroom, King / Twin in 5th bedroom
<i>Bathroom</i>	Walk-in shower and bathtub, steam shower
<i>Connecting Room</i>	Can be booked as a one, two, three, five or seven bedroom suite
<i>Views</i>	Wellington Arch



Example only, exact floor plans may vary

The ROYAL Suite

7 BEDROOM CONFIGURATION

FEATURES

<i>Size</i>	Up to 450 sq m (4,845 sq ft)
<i>Occupancy</i>	Up to 19 guests
<i>Bed</i>	Super King in 1st bedroom, King / Twin in 2nd bedroom, Queen in 3rd bedroom, Super King in 4th bedroom, King / Twin in 5th bedroom, King / Twin in 6th bedroom, King in 7th bedroom
<i>Bathroom</i>	Walk-in shower and bathtub, steam shower
<i>Connecting Room</i>	Can be booked as a one, two, three, five or seven bedroom suite
<i>Views</i>	Wellington Arch