



THE WESTBURY
MAYFAIR - LONDON



YOUR DISTINGUISHED MAYFAIR ADDRESS



YOUR DISTINGUISHED MAYFAIR ADDRESS

The only hotel in London to occupy such a prized address on Bond Street, situated in the heart of Mayfair's fashion and arts district. The Westbury Mayfair offers an enriching choice of 225 bedrooms, 63 of which are luxury suites which have been individually designed by Alex Kravetz. Guests staying in select suites also benefit from the unrivalled Butler service, providing a warm, discreet and personalised service that is tailored to individual wishes and needs. Welcome to your London home.



Alyn Williams at The Westbury - Aspen Room



Alyn Williams at The Westbury - Wine Room

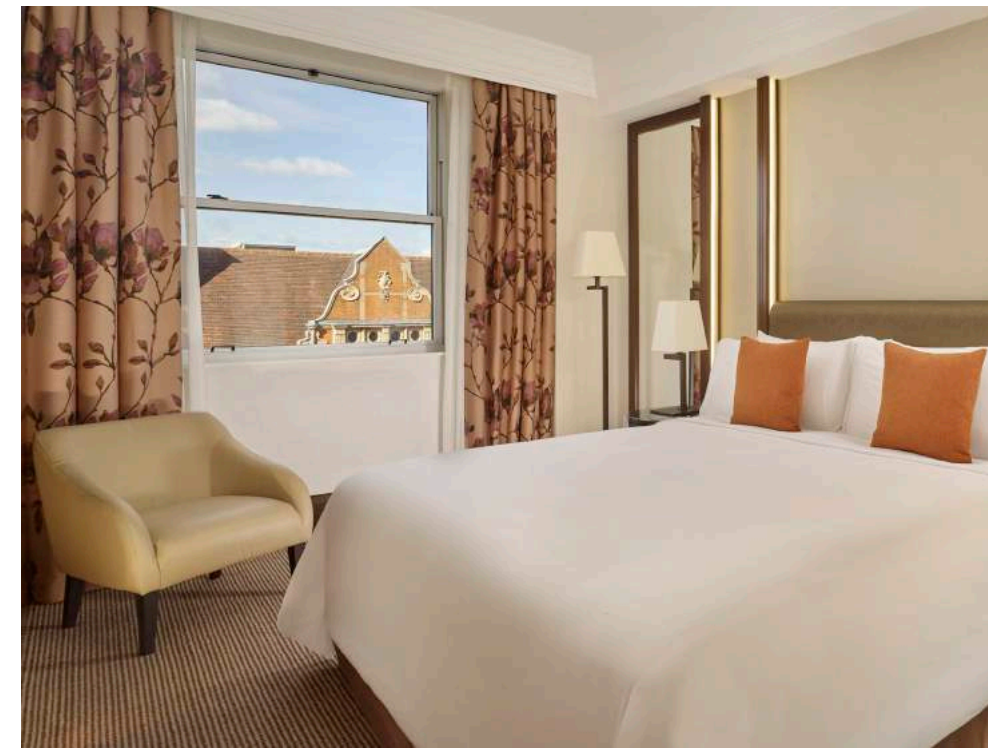


The Polo Bar

SUPERIOR SUITES

Our distinctively styled Superior Suites feature elegant interiors, clad with warm wood panelling. Nowhere else in the world boasts such a rich sartorial heritage as Savile Row in Mayfair and after a full day of shopping in the vibrant neighbourhood, fashion enthusiasts can take pleasure in hanging new finery in the spacious wardrobe. Simply relax in the radiant living area, after discovering the areas hidden secrets in our complimentary 'Secret tour of Mayfair', led by our Golden Key Concierge. Some of our Superior Suites connect with the adjacent Junior Suite, Signature King or Mayfair King rooms, offering enhanced flexibility for families and delegations with a range of two-bedroom or three-bedroom options.

Average size: 430 ft² / 40 m²



DELUXE SUITES

Our enriching collection of Deluxe Suites offer guests heightened luxury, with a private butler at your disposal to shine your shoes or to serve your complimentary breakfast each day in the opportuneness of your suite. Providing every comfort from an Italian marble ensuite bathroom to a 2000 pocket sprung mattress featuring supportive layers of silk and wool for a peaceful night's sleep. Unwind after a day in the bustling capital, in the refined and spacious living room. A Deluxe Suite is perfect for the traveller seeking a memorable and comfortable home away from home.

Some of our Deluxe Suites connect with the adjacent Mayfair King room, providing you with an additional bedroom and living room for those travelling in larger groups.

Average size: 517 ft² / 48 m²





CORNER SUITES

The spacious and elegant Corner Suites offer resplendent views overlooking Bond Street, providing an abundance of natural light in the generous living room. Adorned with a plush sofa and armchairs and soft coloured furnishings, the Corner Suites create a warm and welcoming ambience. Enjoy the convenience of our in-suite check in, choose from an enhanced selection of Asprey bathroom toiletries or savour our exquisite in-room canapés served by your individual butler. A Corner Suite is the ideal base from which to explore the quaint Mayfair neighbourhood.

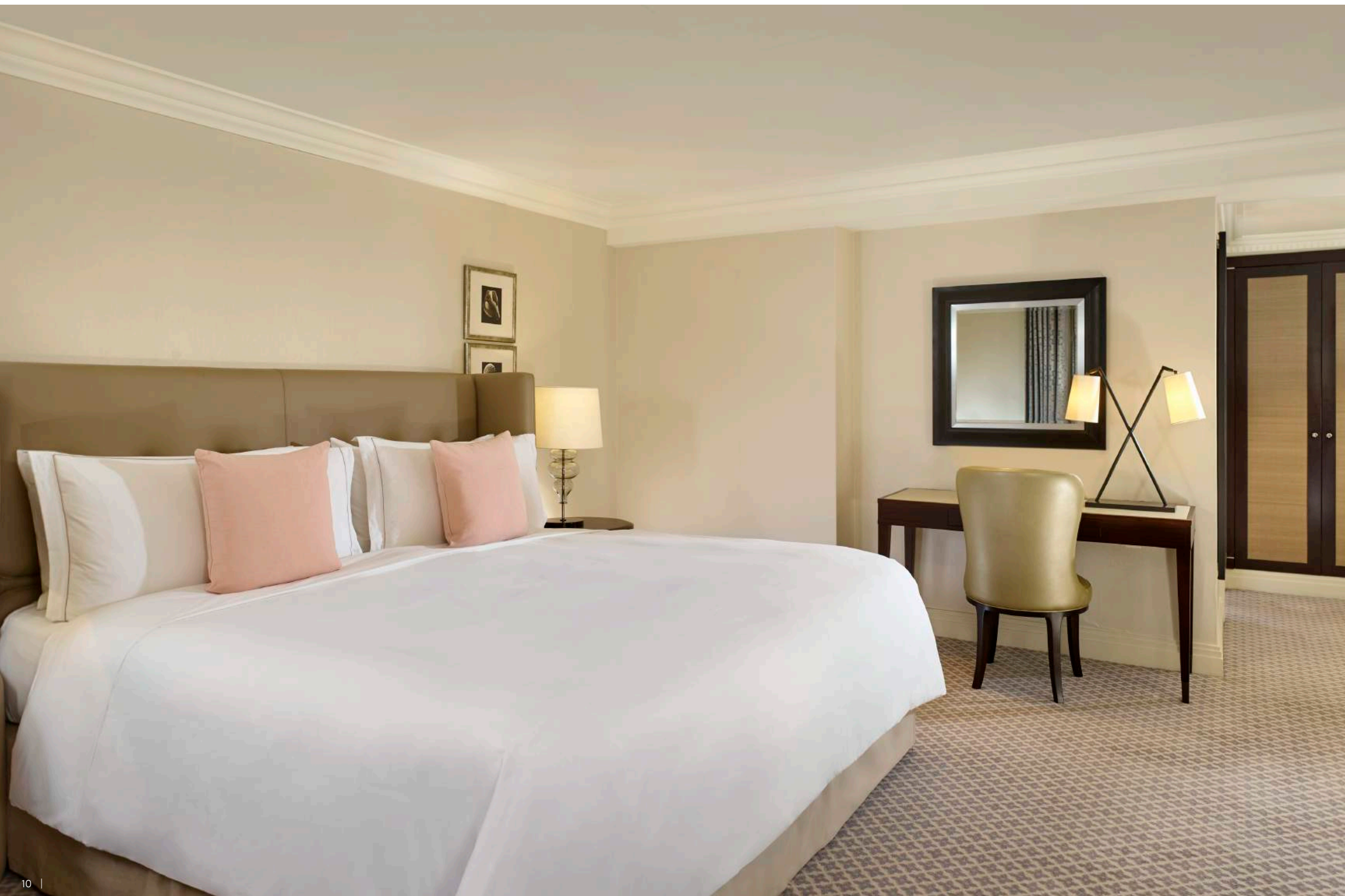
Average size: 646 ft² / 60 m²

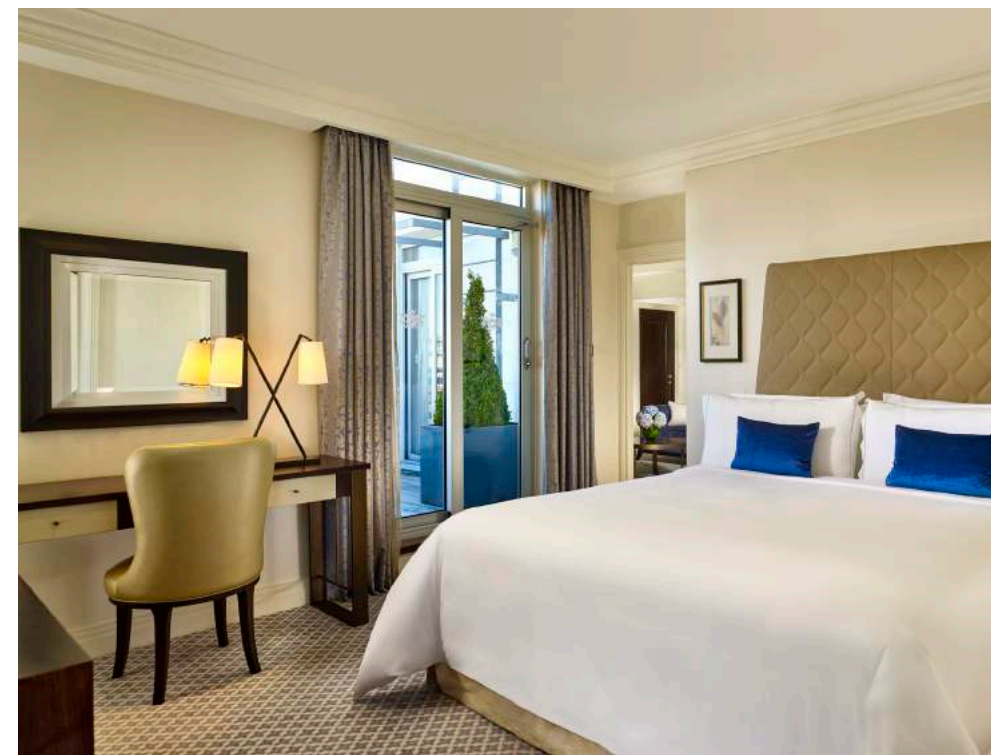


LUXURY SUITES

Sophistication and grandeur meet in our Luxury Suites, with bespoke tailored furnishings, every comfort is provided. Indulge in the luxury of a tailored butler service, welcoming you with champagne on arrival and on hand to assist with any request from unpacking your luggage or assisting with heavy shopping bags to laundering and pressing your clothes. Enjoy heightened convenience with a complimentary valet parking service or one-way airport transfer available at your disposal. The Suites are equipped with a separate guest toilet, enhancing the sense of privacy, perfect for entertaining whilst in Mayfair.

Average size: 807 ft² / 75 m²



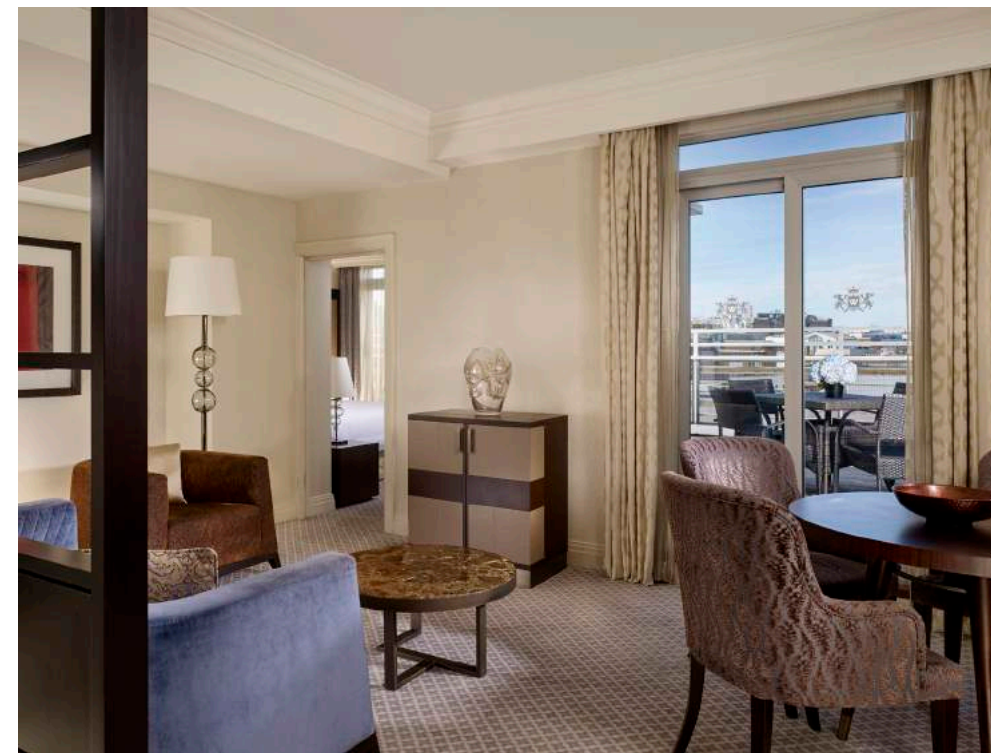


THE BERKELEY TERRACE SUITE

Enjoy the intimacy of your private Mayfair terrace in The Westbury's sumptuous Berkeley Terrace Suite. Named after the local Berkeley Square, this Suite is located on the discreet seventh floor, providing unparalleled city skyline views. Your personalised butler will be on hand to organise your itinerary, refresh your clothes and serve you complimentary afternoon tea as you wish. Create captivating stories on the breath-taking terrace, providing the perfect platform for any summer entertaining or simply to watch the sun go down.

The Berkeley Suite can be extended with the two adjacent Mayfair King rooms with an interconnecting door, this encompassing two extra bedrooms and ensembles, allowing piece of mind when travelling as a family. The connecting room can also be arranged as a Twin room.

Average size: 764 ft² inc. terrace / 71 m² inc. terrace.



THE HANOVER TERRACE SUITE

The Westbury's seventh floor Hanover Terrace Suite offers some of the finest accommodation in London. The Suite, named after the local Hanover Square in Mayfair, boasts a private terrace which overlooks the stunning views of London. The perfect setting for any sunrise yoga, followed by a complimentary breakfast or to enjoy your in-room full bar with a romantic dinner for two served by your personal butler.

The outside terraces of the Hanover Suite and the adjacent St George's Penthouse share an external interconnecting door. This unique opportunity to increase space by sharing a terrace provides additional flexibility if travelling as a group and can accommodate up to four guests.

Average size: 1087 ft² inc. terrace / 101 m² inc. terrace



ST GEORGE'S PENTHOUSE



ST GEORGE'S PENTHOUSE

Residing on the top floor, the iconic St George's Penthouse Suite is the jewel in The Westbury's crown. Wake up to enjoy a sumptuous breakfast banquet on the captivating terrace, with magnificent panoramic views that overlook the local St George's Church as well as the rooftops of Conduit and Bond Street. Large terrace windows illuminate the open lounge area with spacious dining for up to eight guests, an ideal open space to host events, business meetings or private celebrations organised and prepared by your butler. Your discreet and personalised butler will remain at your service for any tailored requests from serving champagne and canapés to personal shopping or booking complimentary airport transfers.

The Penthouse Suite can be transformed into a three-bedroom suite if connected with the adjacent Luxury King bedroom, with a common door, or the Hanover Terrace Suite with a shared terrace. Providing a secluded section on the seventh floor, this incomparable option gives guests more space and versatility to accommodate up to six people, creating a memorable stay for larger groups or families. Average size: 1432 ft² inc. terrace / 133 m² inc. terrace





Stay in one of our sophisticated and unique Suites at The Westbury Mayfair for an exceptional, intimate and unforgettable London experience. Our highly experienced team of Les Clefs d'Or Concierge have an innate insight into the compelling experiences in and around the city. With their specialist location knowledge and "Golden Keys" they can unlock doors that no others can, curating specially arranged experiences to some of the most exclusive fashion houses, art galleries and restaurants in the neighbourhood.

THE WESTBURY MAYFAIR
A LUXURY COLLECTION HOTEL, LONDON
37 CONDUIT STREET, MAYFAIR
LONDON W1S 2YF
T +44 (0)20 7629 7755 – F +44 (0)20 7000 1360
E RESERVATIONS@WESTBURYMAYFAIR.COM

WESTBURYMAYFAIR.COM

