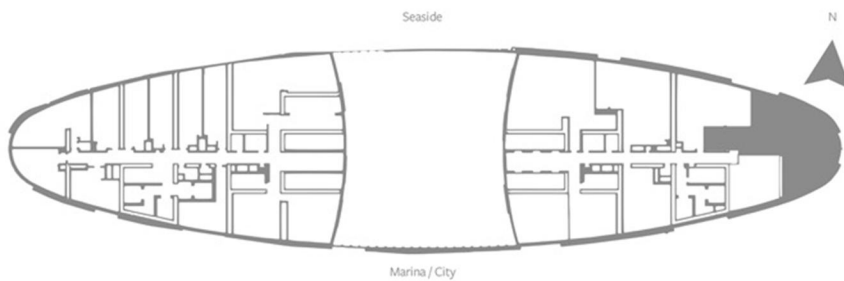
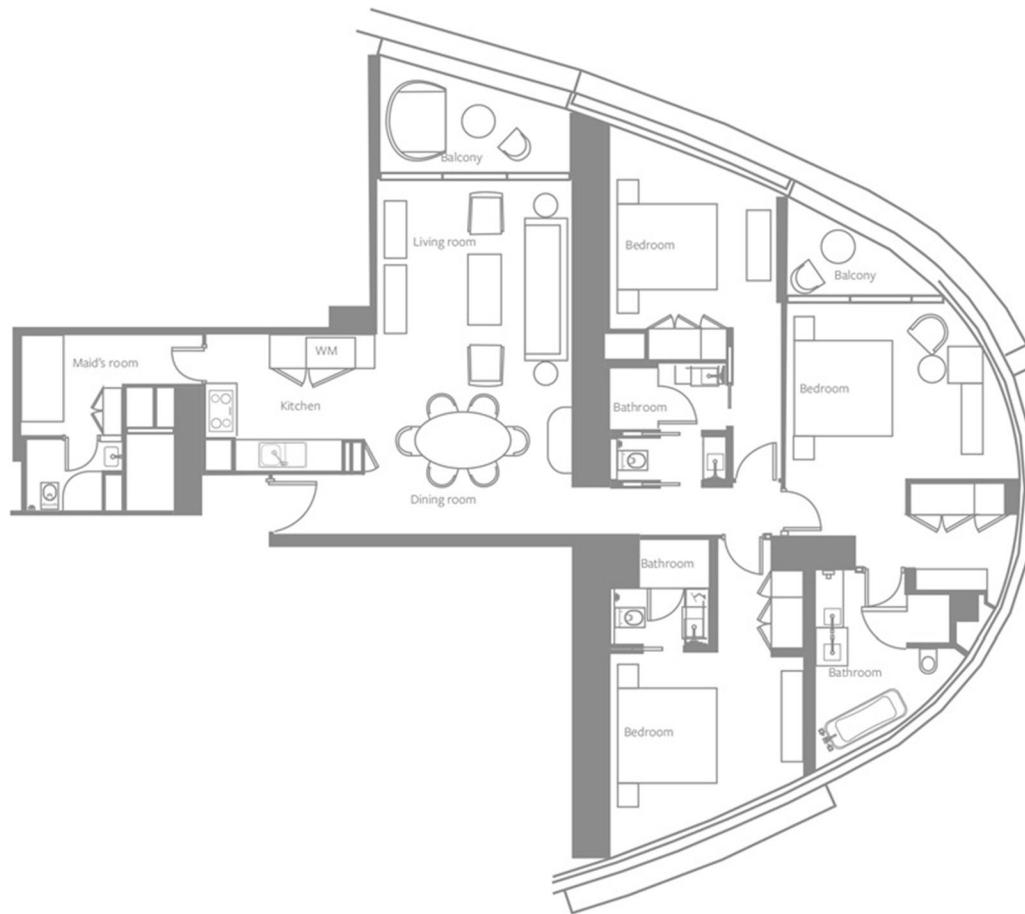


THREE-BEDROOM RESIDENCE - TYPE R3A
 LEVELS: 3 TO 16, 18 TO 41

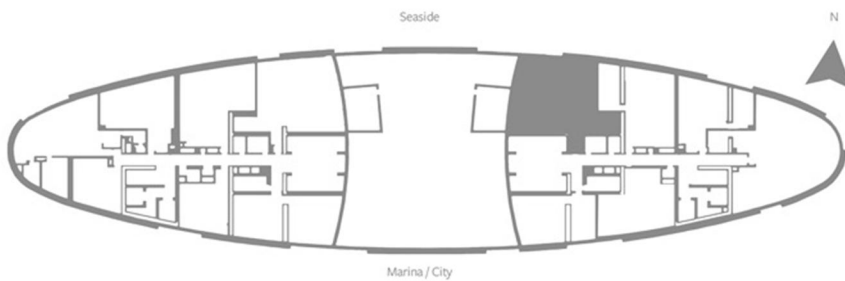
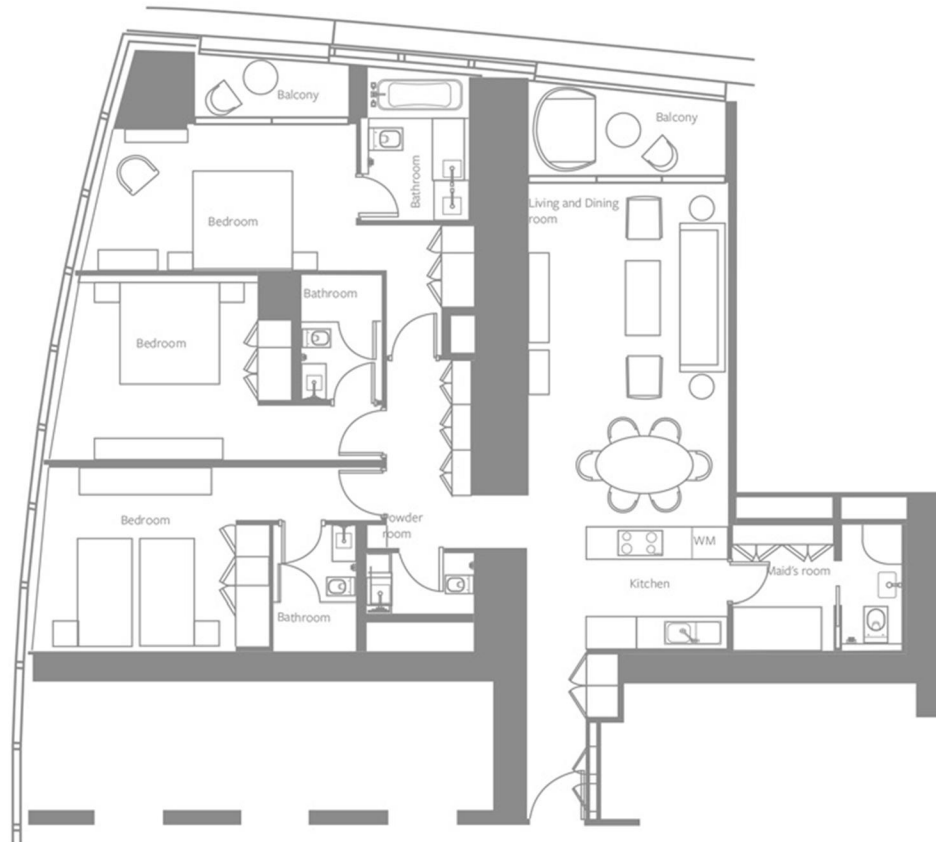


SELLABLE AREA

	sq.m	sq.ft
Suite Area	162	1744
Balcony Area	14	151
Total Area	176	1895

Disclaimer: 1. All materials, dimensions and drawings are approximate. 2. Information is subject to change without notice. 3. Actual suite area may vary from the stated area. 4. Drawings not to scale. 5. The developer reserves the right to make revisions/alterations without any liability whatsoever. 6. Residential Apartments are sold as unfurnished apartments, without furniture, furnishings, white goods, etc.

THREE-BEDROOM RESIDENCE - TYPE R3B
 LEVELS: 13 TO 16, 18 TO 41, 43 TO 62

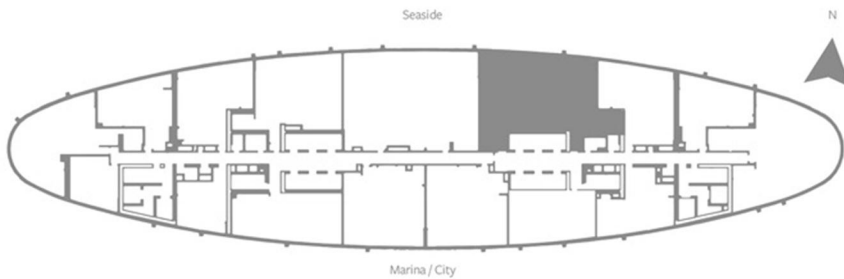
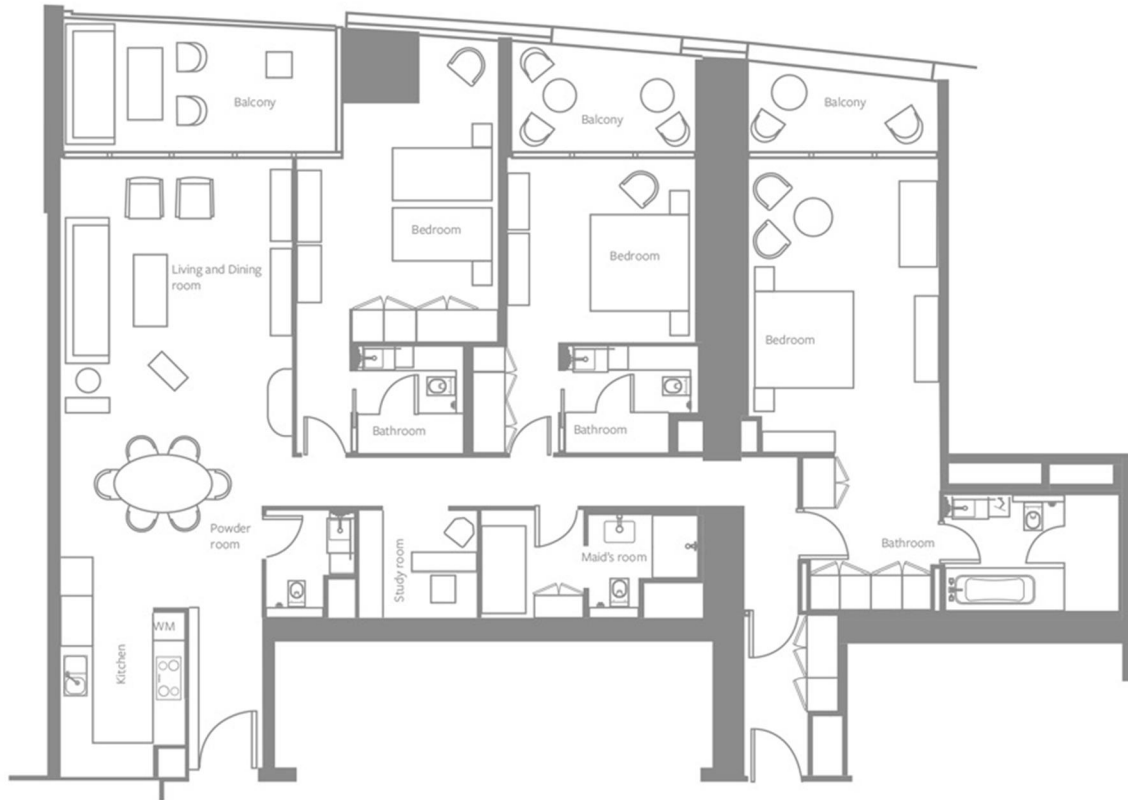


SELLABLE AREA

	sq.m	sq.ft
Suite Area	166 - 167	1787 - 1798
Balcony Area	16 - 17	172 - 183
Total Area	182 - 184	1959 - 1981

Disclaimer: 1. All materials, dimensions and drawings are approximate. 2. Information is subject to change without notice. 3. Actual suite area may vary from the stated area. 4. Drawings not to scale. 5. The developer reserves the right to make revisions/alterations without any liability whatsoever. 6. Residential Apartments are sold as unfurnished apartments, without furniture, furnishings, white goods, etc.

THREE-BEDROOM RESIDENCE - TYPE R3C
 LEVELS: 64 TO 67



SELLABLE AREA

	sq.m	sq.ft
Suite Area	218	2347
Balcony Area	37	398
Total Area	255	2745

Disclaimer: 1. All materials, dimensions and drawings are approximate. 2. Information is subject to change without notice. 3. Actual suite area may vary from the stated area. 4. Drawings not to scale. 5. The developer reserves the right to make revisions/alterations without any liability whatsoever. 6. Residential Apartments are sold as unfurnished apartments, without furniture, furnishings, white goods, etc.