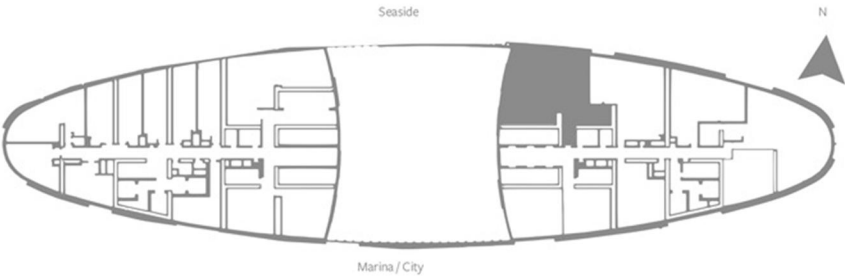
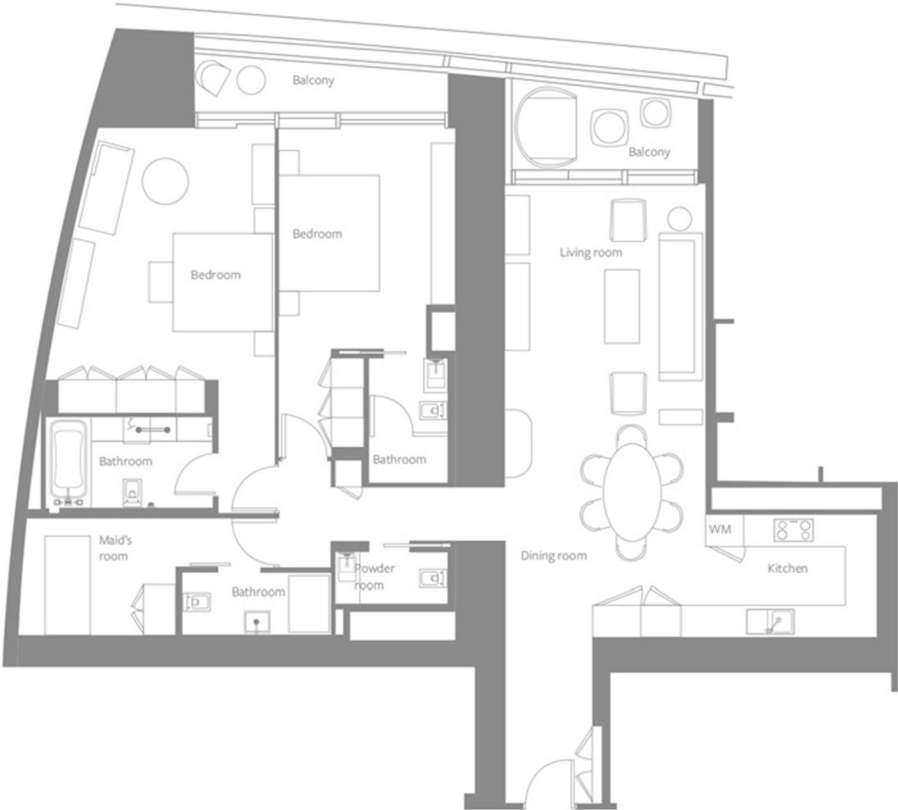


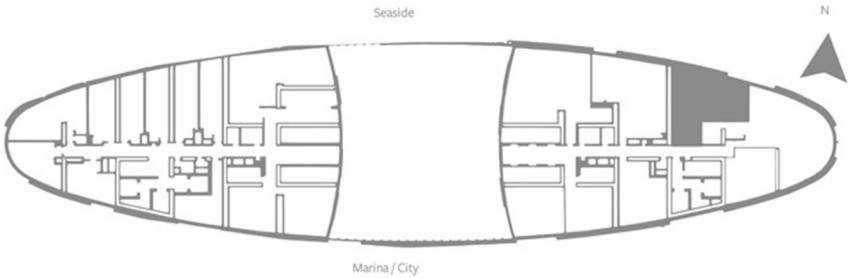
TWO-BEDROOM RESIDENCE - TYPE R2A
LEVELS: 3 TO 8, 11 TO 12, 63



SELLABLE AREA		
	sq.m	sq.ft
Suite Area	160 - 163	1722 - 1755
Balcony Area	19 - 21	205 - 226
Total Area	179 - 184	1927 - 1981

Disclaimer: 1. All materials, dimensions and drawings are approximate. 2. Information is subject to change without notice. 3. Actual suite area may vary from the stated area. 4. Drawings not to scale. 5. The developer reserves the right to make revisions/alterations without any liability whatsoever. 6. Residential Apartments are sold as unfurnished apartments, without furniture, furnishings, white goods, etc.

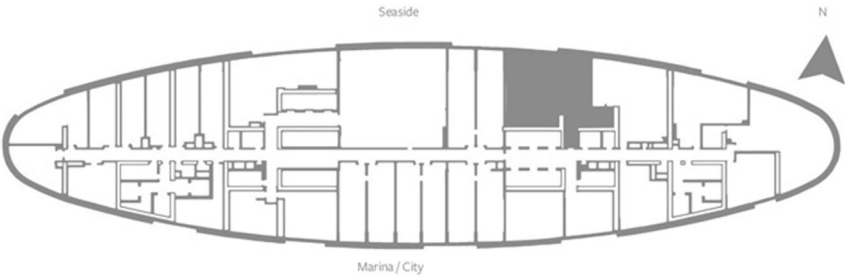
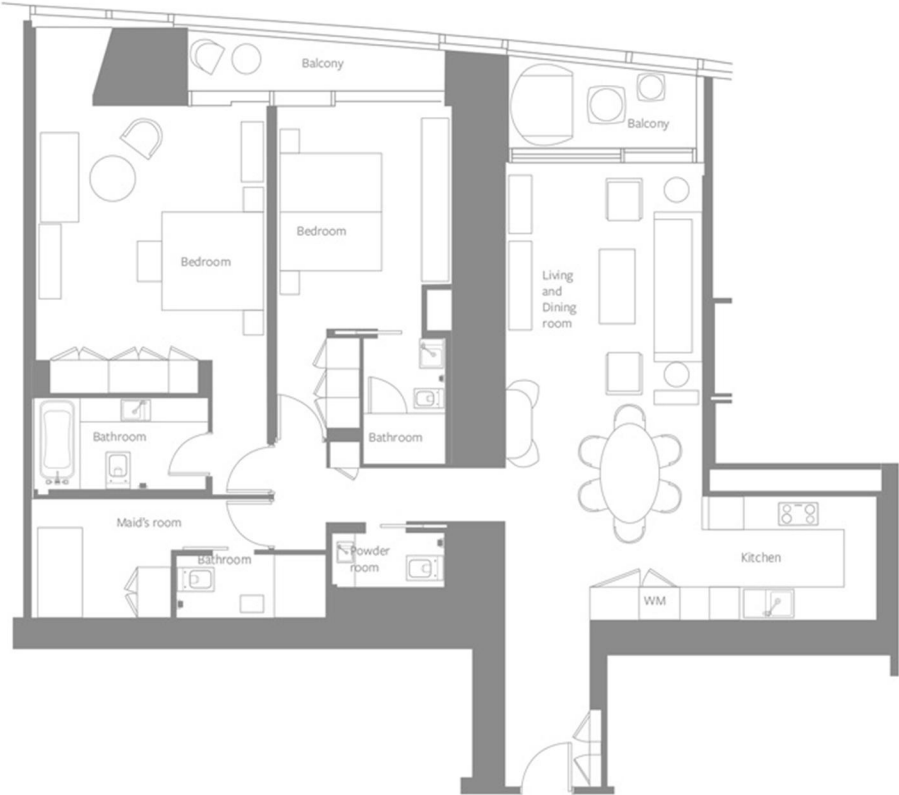
TWO-BEDROOM RESIDENCE - TYPE R2C
LEVELS: 3 TO 16, 18 TO 41, 43 TO 72



SELLABLE AREA		
	sq.m	sq.ft
Suite Area	99 - 100	1066 - 1076
Balcony Area	10	108
Total Area	109 - 110	1174 - 1184

Disclaimer: 1. All materials, dimensions and drawings are approximate. 2. Information is subject to change without notice. 3. Actual suite area may vary from the stated area. 4. Drawings not to scale. 5. The developer reserves the right to make revisions/alterations without any liability whatsoever. 6. Residential Apartments are sold as unfurnished apartments, without furniture, furnishings, white goods, etc.

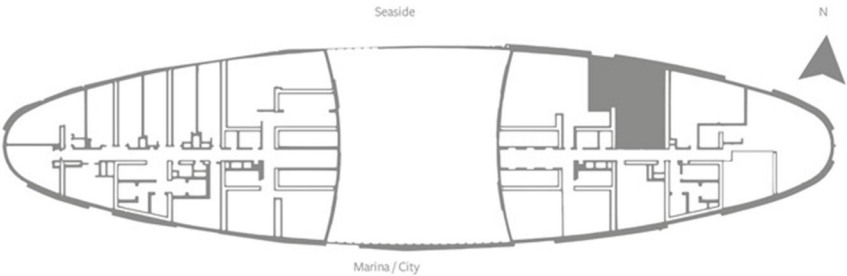
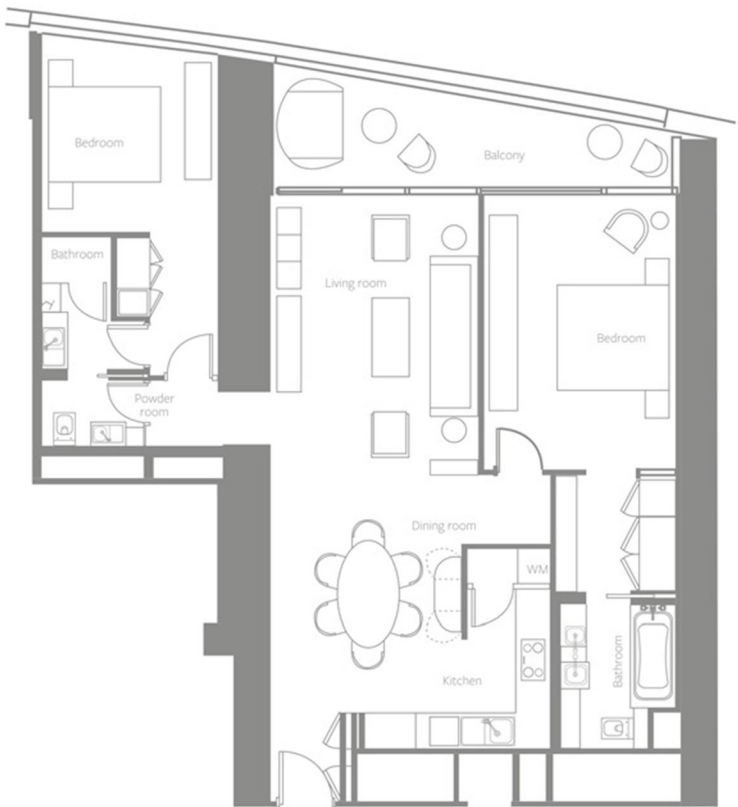
TWO-BEDROOM RESIDENCE - TYPE R2D
LEVELS: 9 TO 10



SELLABLE AREA		
	sq.m	sq.ft
Suite Area	162	1744
Balcony Area	23	247
Total Area	185	1991

Disclaimer: 1. All materials, dimensions and drawings are approximate. 2. Information is subject to change without notice. 3. Actual suite area may vary from the stated area. 4. Drawings not to scale. 5. The developer reserves the right to make revisions/alterations without any liability whatsoever. 6. Residential Apartments are sold as unfurnished apartments, without furniture, furnishings, white goods, etc.

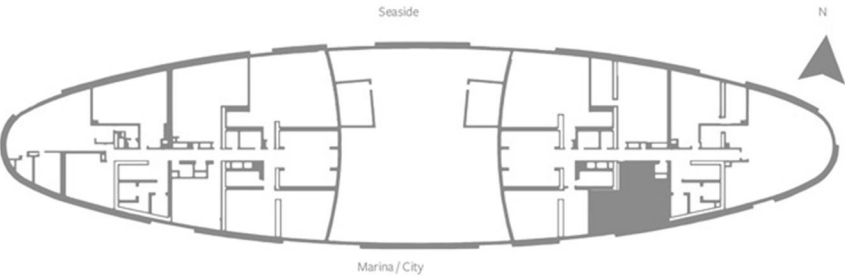
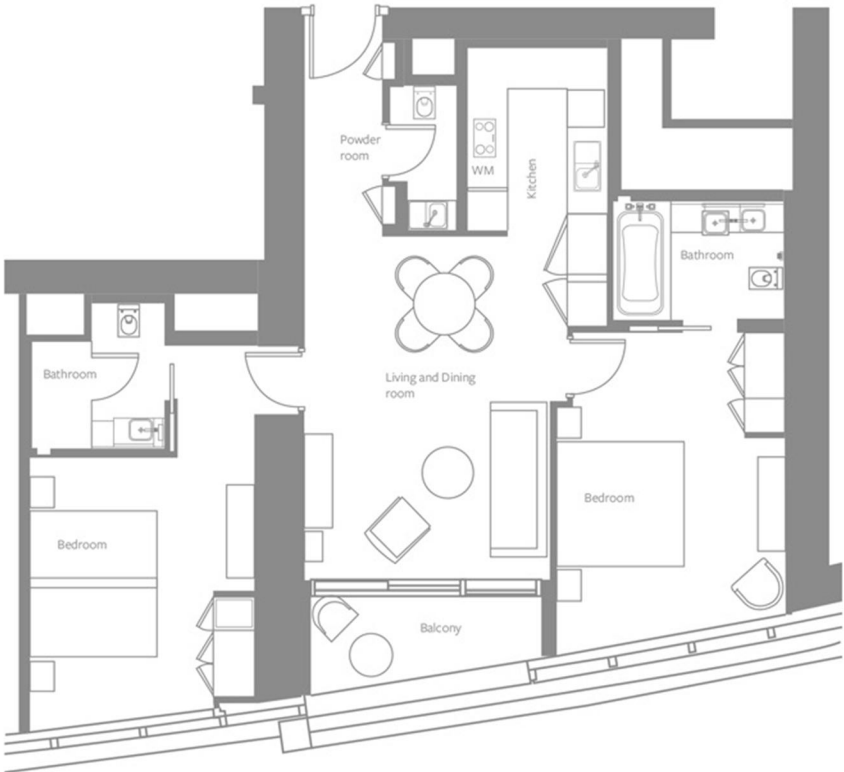
TWO-BEDROOM RESIDENCE - TYPE R2E
LEVELS: 3 TO 16, 18 TO 41, 43 TO 67



SELLABLE AREA		
	sq.m	sq.ft
Suite Area	123 - 124	1324 - 1335
Balcony Area	16	172
Total Area	139 - 140	1496 - 1507

Disclaimer: 1. All materials, dimensions and drawings are approximate. 2. Information is subject to change without notice. 3. Actual suite area may vary from the stated area. 4. Drawings not to scale. 5. The developer reserves the right to make revisions/alterations without any liability whatsoever. 6. Residential Apartments are sold as unfurnished apartments, without furniture, furnishings, white goods, etc.

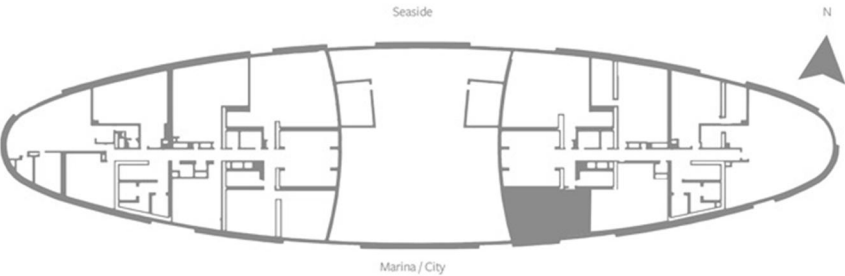
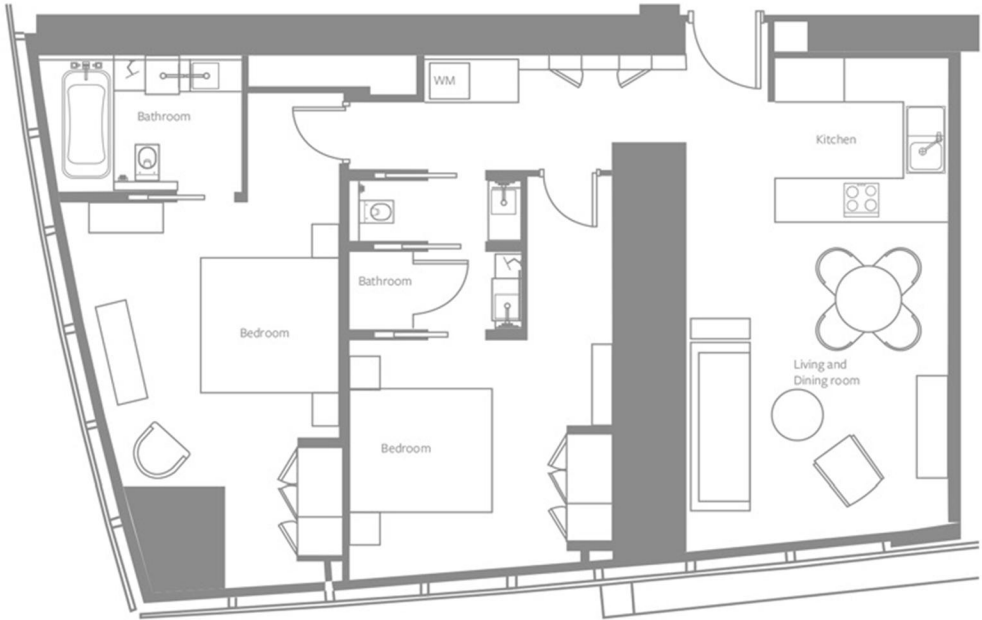
TWO-BEDROOM RESIDENCE - TYPE R2F
LEVELS: 43 TO 72



SELLABLE AREA		
	sq.m	sq.ft
Suite Area	100 - 101	1076 - 1087
Balcony Area	7	75
Total Area	107 - 108	1151 - 1162

Disclaimer: 1. All materials, dimensions and drawings are approximate. 2. Information is subject to change without notice. 3. Actual suite area may vary from the stated area. 4. Drawings not to scale. 5. The developer reserves the right to make revisions/alterations without any liability whatsoever. 6. Residential Apartments are sold as unfurnished apartments, without furniture, furnishings, white goods, etc.

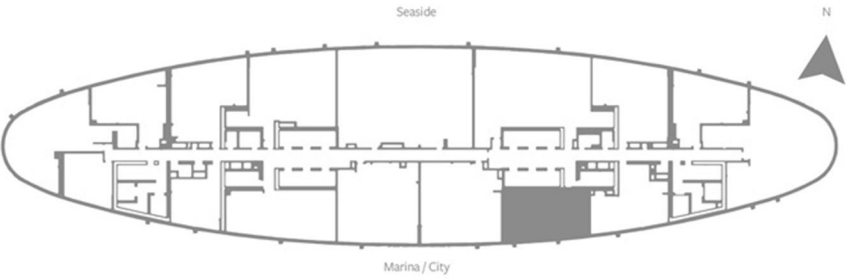
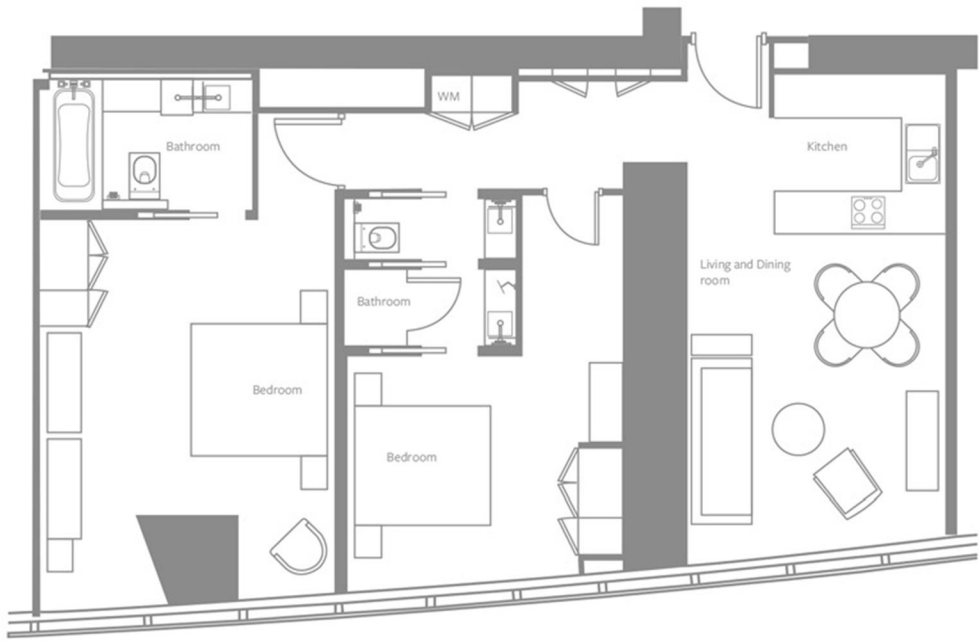
TWO-BEDROOM RESIDENCE - TYPE R2G
LEVELS: 43 TO 62



SELLABLE AREA		
	sq.m	sq.ft
Suite Area	107 - 108	1152 - 1163
Total Area	107 - 108	1152 - 1163

Disclaimer: 1. All materials, dimensions and drawings are approximate. 2. Information is subject to change without notice. 3. Actual suite area may vary from the stated area. 4. Drawings not to scale. 5. The developer reserves the right to make revisions/alterations without any liability whatsoever. 6. Residential Apartments are sold as unfurnished apartments, without furniture, furnishings, white goods, etc.

TWO-BEDROOM RESIDENCE - TYPE R2H
LEVELS: 64 TO 72



SELLABLE AREA		
	sq.m	sq.ft
Suite Area	113	1216
Total Area	113	1216

Disclaimer: 1. All materials, dimensions and drawings are approximate. 2. Information is subject to change without notice. 3. Actual suite area may vary from the stated area. 4. Drawings not to scale. 5. The developer reserves the right to make revisions/alterations without any liability whatsoever. 6. Residential Apartments are sold as unfurnished apartments, without furniture, furnishings, white goods, etc.