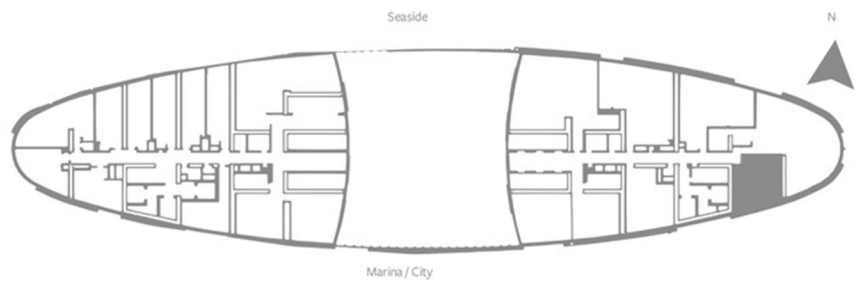
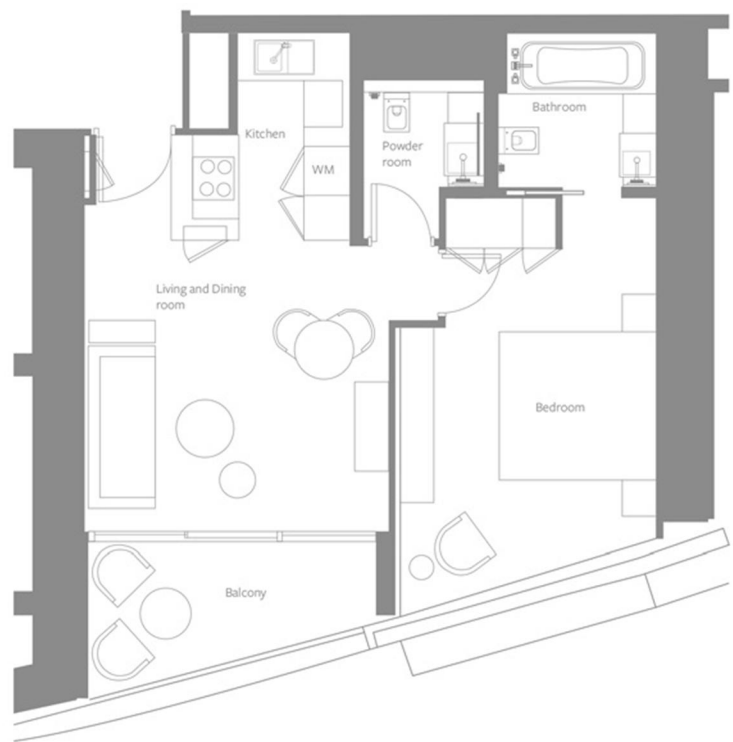


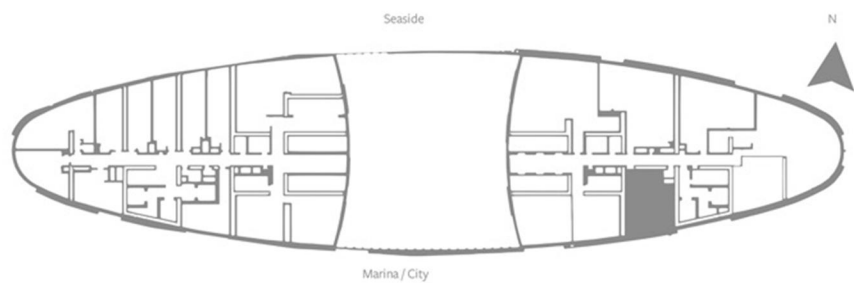
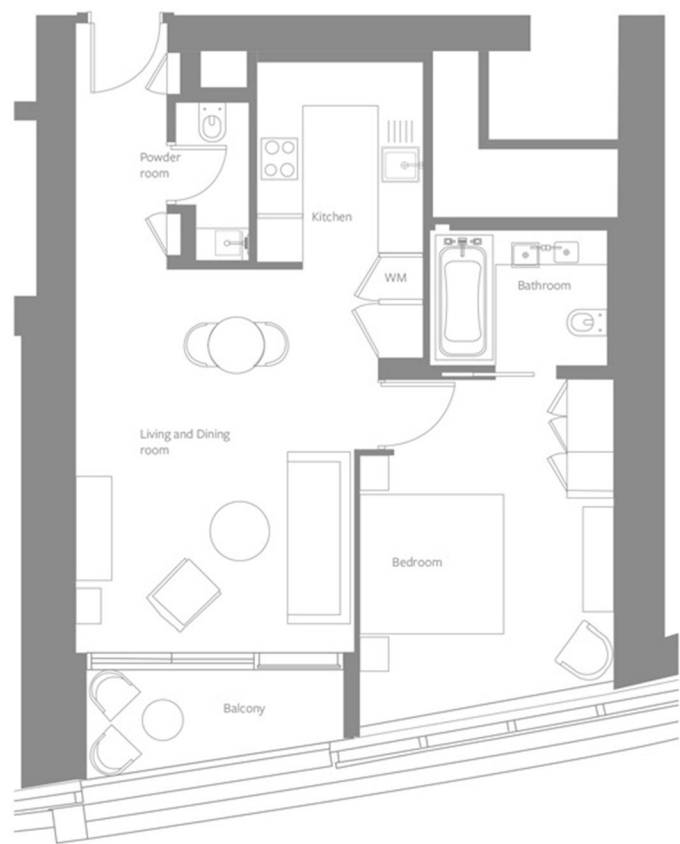
ONE-BEDROOM RESIDENCE - TYPE R1A  
LEVELS: 3 TO 16, 18 TO 41



SELLABLE AREA		
	sq.m	sq.ft
Suite Area	57	614
Balcony Area	8	86
Total Area	65	700

Disclaimer: 1. All materials, dimensions and drawings are approximate. 2. Information is subject to change without notice. 3. Actual suite area may vary from the stated area. 4. Drawings not to scale. 5. The developer reserves the right to make revisions/alterations without any liability whatsoever. 6. Residential Apartments are sold as unfurnished apartments, without furniture, furnishings, white goods, etc.

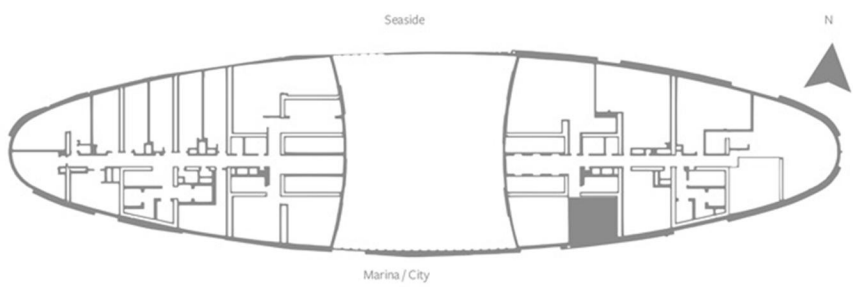
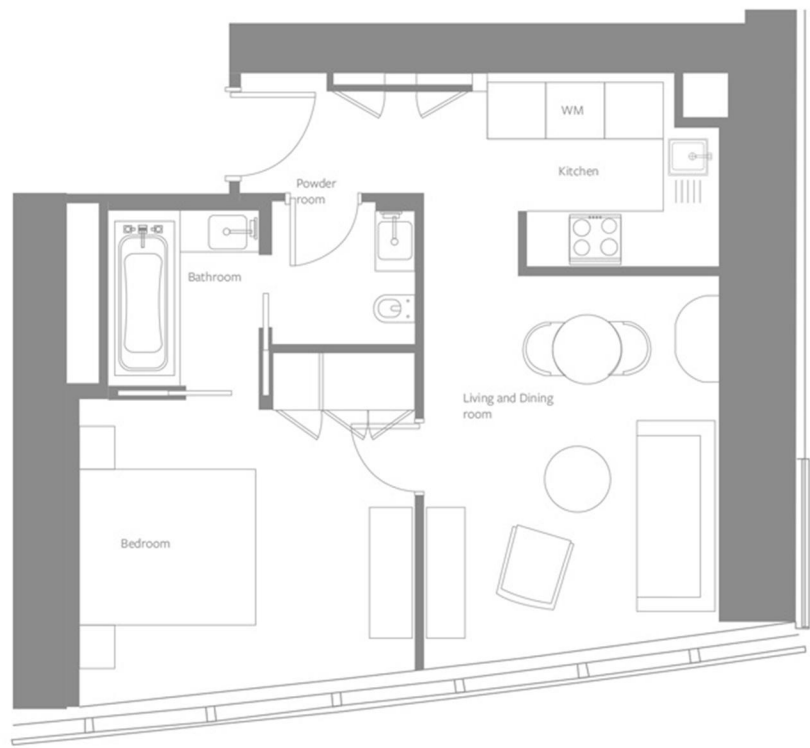
ONE-BEDROOM RESIDENCE - TYPE R1B  
LEVELS: 3 TO 16, 18 TO 41



SELLABLE AREA		
	sq.m	sq.ft
Suite Area	72	775
Balcony Area	8	86
Total Area	80	861

Disclaimer: 1. All materials, dimensions and drawings are approximate. 2. Information is subject to change without notice. 3. Actual suite area may vary from the stated area. 4. Drawings not to scale. 5. The developer reserves the right to make revisions/alterations without any liability whatsoever. 6. Residential Apartments are sold as unfurnished apartments, without furniture, furnishings, white goods, etc.

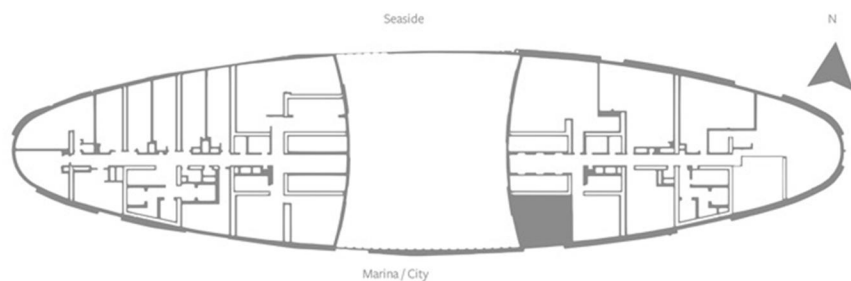
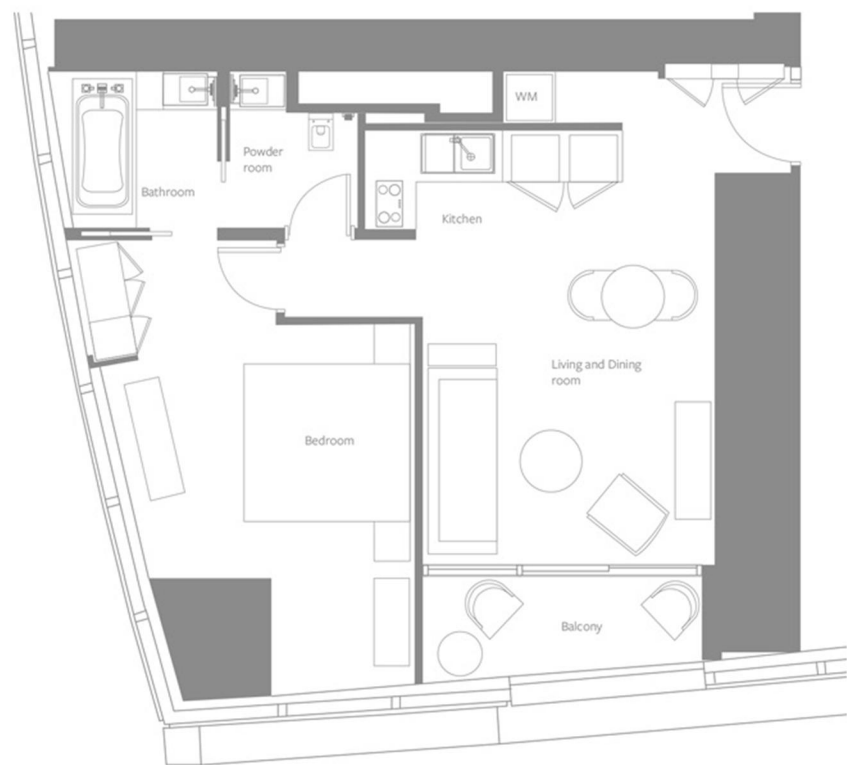
ONE-BEDROOM RESIDENCE - TYPE R1C  
LEVELS: 3 TO 16, 18 TO 41



SELLABLE AREA		
	sq.m	sq.ft
Suite Area	59	635
Total Area	59	635

Disclaimer: 1. All materials, dimensions and drawings are approximate. 2. Information is subject to change without notice. 3. Actual suite area may vary from the stated area. 4. Drawings not to scale. 5. The developer reserves the right to make revisions/alterations without any liability whatsoever. 6. Residential Apartments are sold as unfurnished apartments, without furniture, furnishings, white goods, etc.

ONE-BEDROOM RESIDENCE - TYPE R1D  
LEVELS: 13 TO 16, 18 TO 41

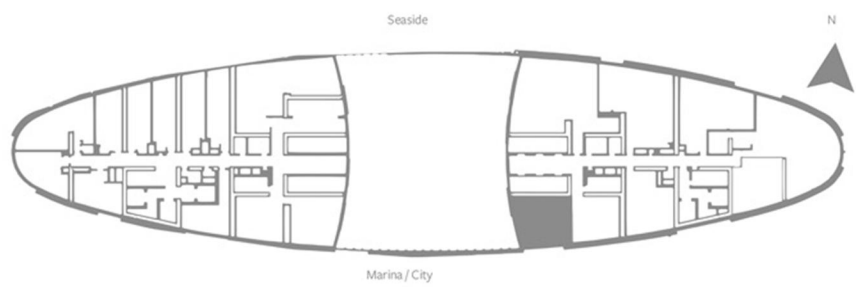
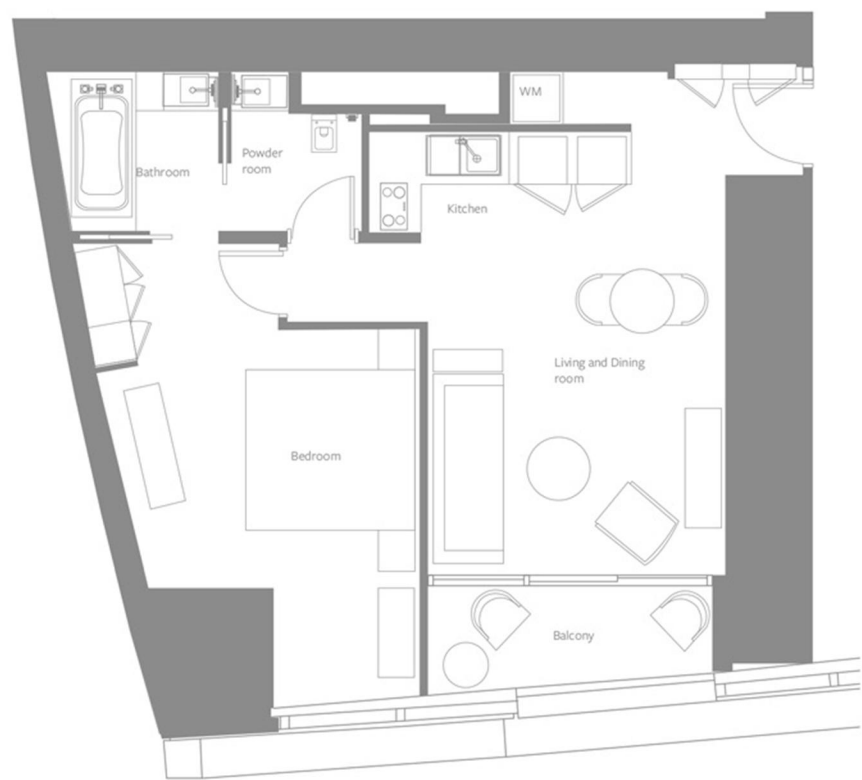


SELLABLE AREA

	sq.m	sq.ft
Suite Area	62 - 65	667 - 700
Balcony Area	6	65
Total Area	68 - 71	732 - 765

Disclaimer: 1. All materials, dimensions and drawings are approximate. 2. Information is subject to change without notice. 3. Actual suite area may vary from the stated area. 4. Drawings not to scale. 5. The developer reserves the right to make revisions/alterations without any liability whatsoever. 6. Residential Apartments are sold as unfurnished apartments, without furniture, furnishings, white goods, etc.

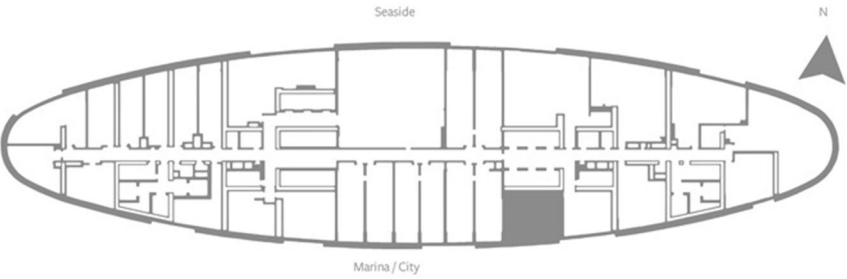
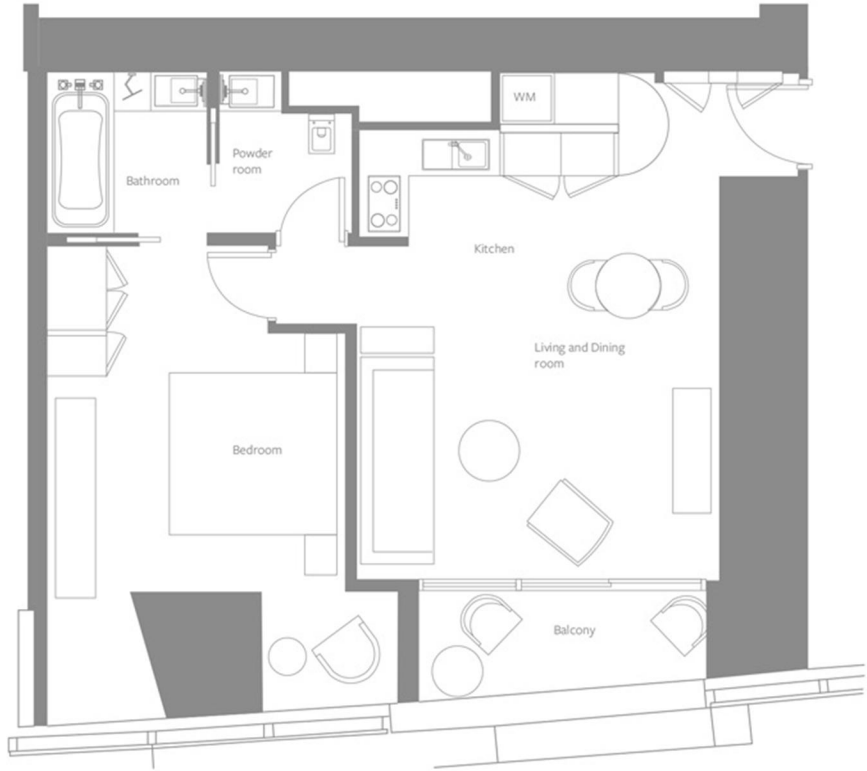
ONE-BEDROOM RESIDENCE - TYPE R1D  
LEVELS: 3 TO 8, 11 TO 12



SELLABLE AREA		
	sq.m	sq.ft
Suite Area	62 - 65	667 - 700
Balcony Area	6	65
Total Area	68 - 71	732 - 765

Disclaimer: 1. All materials, dimensions and drawings are approximate. 2. Information is subject to change without notice. 3. Actual suite area may vary from the stated area. 4. Drawings not to scale. 5. The developer reserves the right to make revisions/alterations without any liability whatsoever. 6. Residential Apartments are sold as unfurnished apartments, without furniture, furnishings, white goods, etc.

ONE-BEDROOM RESIDENCE - TYPE R1E  
LEVELS: 9 TO 10



SELLABLE AREA		
	sq.m	sq.ft
Suite Area	69	743
Balcony Area	6	65
Total Area	75	808

Disclaimer: 1. All materials, dimensions and drawings are approximate. 2. Information is subject to change without notice. 3. Actual suite area may vary from the stated area. 4. Drawings not to scale. 5. The developer reserves the right to make revisions/alterations without any liability whatsoever. 6. Residential Apartments are sold as unfurnished apartments, without furniture, furnishings, white goods, etc.